

## APL-5 Series Valve Position Monitor

# Installation, Operation & Maintenance Manual



Address : 26, Emtibeui 28-ro, Siheung-si, Gyeonggi-do, 15119, Republic of Korea

Tel : +82-31-488-8266, Fax : +82-31-488-8269, Home page : [www.hkcon.co.kr](http://www.hkcon.co.kr), email : [hkcon@hkcon.co.kr](mailto:hkcon@hkcon.co.kr)

## Contents

1. General.....	3
2. Ordering Information .....	3
3. Standard specification.....	4
4. Preparing for Installation .....	4
4.1. Marking .....	4
4.2. Pre-Installation for use in potentially explosive atmosphere .....	5
4.3. Initial inspection .....	5
5. Standard Features .....	5
6. Installation .....	6
6.1. Mounting bracket .....	6
6.2. Mounting limit switch box.....	6
6.3. Cam setting .....	6
6.4. Wiring.....	7
6.5. Setting for Position Transmitter Unit (APL- 5*6).....	10
7. Maintenance .....	10
8. Inspection.....	11
9. Storage .....	11
10. Trouble shooting .....	11
11. Tools.....	11
12. Installation and Maintenance Tips .....	11
13. [APL-5 series construction summary .....	12

## 1. General

- 1.1. HKC APL-5... series limit switch boxes are designed to provide accurate and reliable valve position signalling and indicating of most valves or actuators manufactured.
- 1.2. APL-5... limit switch boxes consists of a visual position indicator, quick-set cam ass'y, terminal strip, switch ass'y and easy mounting bracket. Quick-set cam allows for a quick and simple hand operation in the setting of switches.

## 2. Ordering Information

- 2.1. [HS Code of the valve position monitors for overseas trading are 8536.50-9090 --- 22 r0]

# APL - 5 1 0 N

- ① **[Enclosure type of explosion proof is based on IECEx, CNEX, INMETRO --- 21 r1]**  
 Ex db IIC T6 Gb  
 Ex ia IIC T6 Gb (APL-520 \* only)  
 Ex tb IIIC T85°C Db, IP67
- Enclosure type of explosion proof is based on ATEX**  
 II 2G Ex db IIC T6 Gb  
 II 2G Ex ia IIC T6 Gb (APL-520 \* only)  
 II 2D Ex tb IIIC T85°C Db, IP67
- Enclosure type of explosion proof is based on KCs, NEPSI, [CCC --- 21 r1] :**  
 Ex d IIC T6 Gb  
 Ex ia IIC T6 Gb (APL-520 \* only, except NEPSI)  
 Ex tD A21 IP67 T85°C
- Enclosure type of explosion proof is based on CSA :**  
 Class I, Division 1, Group B, C & D T6; Class II, Division 1, Group E,F and G; Class III,  
 Class I, Zone 1, AEx d IIC T6, Class II, Zone 21, AEx tb IIIC T65°C Db  
 Ex d IIC T6, Ex tb IIIC T65°C Db  
 NEMA type 4X/6, IP 66/67
- Enclosure type of explosion proof is based on EAC :**  
 1Ex d IIC T6 Gb X  
 0Ex ia IIC T6 Ga X (APL-520, APL-522 only)  
 Ex tb IIIC T85°C Db --- 21
- ② **Switch type**
- [Mechanical switch (Ambient temp.: Please see Cl. 13 construction summary)]**  
 10 : 2-SPDT (Zippy VA2-16, Wonwoo SZM-V16-5FA, 250Vac 15A max)  
 11 : 3-SPDT (Zippy VA2-16, Wonwoo SZM-V16-5FA, 250Vac 15A max)  
 12 : 4-SPDT (Zippy VA2-16, Wonwoo SZM-V16-5FA, 250Vac 15A max)  
 13 : 2-SPST (Zippy VA2-16, Wonwoo SZM-V16-5FA, 250Vac 15A max)  
 14 : 2-DPDT (Omron DZ-10GW-1B, 250Vac 4A max)  
 15 : 2-SPDT + Potentiometer (Zippy VA2-16, Wonwoo SZM-V16-5FA, 250Vac 15A max)  
 16 : 2-SPDT + Signal Unit(4~20mA (Zippy VA2-16, Wonwoo SZM-V16-5FA, 250Vac 15A max)
- [Proximity switch (Ambient temp.: Please see Cl. 13 construction summary)]**  
 20 : Proximity Sensor (P&F NJ2-V3-N, 8V dc, 15 mA max)  
 21 : Proximity Sensor (Autonics PS17-5DNU, 10-30V dc, 2-100 mA)  
 22 : Proximity Sensor (P&F NJ4-12GM-N, 8V dc, 1 kΩ)  
 23 : Proximity Sensor (P&F NBB2-V3, 5-60V dc, 4-100 mA)  
 25 : Proximity Sensor (P&F NJ2-V3-N, 8V dc, 15 mA) + Potentiometer  
 26 : Proximity Sensor (P&F NJ2-V3-N, 8V dc, 15 mA) + Signal Unit(4~20mA)
- [Reed switch (Ambient temp.: Please see Cl. 13 construction summary)]**  
 30A : Reed Sensor (MS-B 301, 250V 0.5A max)  
 30B : Reed Sensor (MK21, model 85, 250V 1A max)  
 31 : Reed Sensor (MK21, model 66, 180V 0.5A max)  
 32 : Reed Sensor (MK21, model 90, 175V 0.5A max)  
 34 : Reed Sensor (APH HSR-634W, 120Vdc 3.5A max)  
 35 : Reed Sensor (APH HSR-933W, 500Vdc 3.0A max)  
**[36 : Reed Sensor (APH 27103, 220Vac, 350Vdc, 1A max) ---22 r2]**
- [Low temperature service (Ambient temp.: Please see Cl. 13 construction summary) – 22 r0]**  
 H1 : 2-SPDT (Honeywell 11SX22-T, 250V 4A max)  
 H2 : 2-SPDT (Honeywell 12SX1-T, 125V 1A max)  
 H3 : 2-SPDT (Honeywell 13SX21-T, 125V 1A max)



**4.2. Pre-Installation for use in potentially explosive atmosphere**

Installation, commissioning, maintenance, repairs and modification work must only be performed by qualified personnel with extensive knowledge on how to work on explosion-proof electrical equipment.

**⊗ Warning : Read this installation and maintenance manual carefully and completely before attempting to install, operate, or troubleshoot the HKC product**

**4.2.1. Cable Connection**

- ① Sealing devices must be used and shall be fitted directly at enclosure wall when using conduit.
- ② Cable glands shall be suitable for the environment and shall be certified as flameproof if used in Zone 1 application of IECEx scheme in order to connect outside electric wire.
- ③ Cable glands and conduit to be installed minimum 8 full threads and the length of thread is minimum 8mm.
- ④ **“Warning”** : Please be sure that user should select the appropriate cable glands and minimum 2SQ of wire for fear that the proper using temperature of cable entry and wire way exceed 70 °C or the blanching point is over 80 °C.
- ⑤ When cable entries or conduit entries are not used, user or installer shall close by certified blanking elements (stopping plugs) so that the flameproof properties of the enclosure are maintained.

**4.2.2. Groundings**

- ① Always ground the enclosure in accordance with local electric codes. The most effective enclosure grounding method is a direct connection to earth ground with minimal impedance. Methods for grounding the enclosure include:  
Internal ground connection : The internal ground is located inside the body .  
External ground connection : The ground bracket is located on the side of body.  
(Min 2SQ wire required)

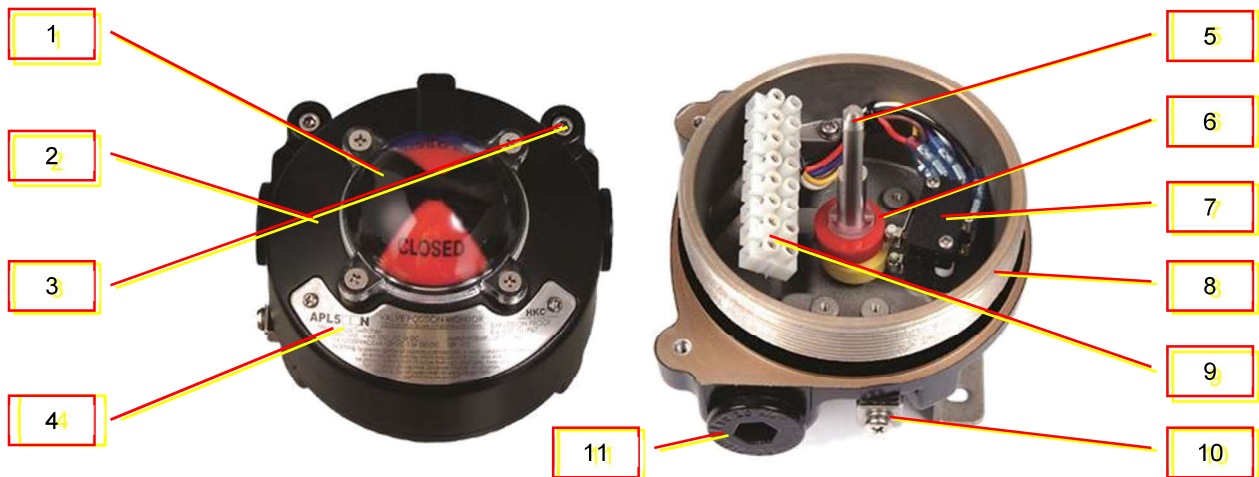
**4.2.3. Special Condition for safe use (“X” marking)**

- ① Electrostatic discharge from window(over 1GΩ) may cause the ignition on the explosive gas atmosphere. By adapting the conducting window bolts make reduce the risk from electrostatic discharge.
- ② Before installation or maintenance products, shut off incoming power and grounding should be connected.
- ③ The window must only be cleaned with a damp cloth in order to avoid ignition hazard caused by static electricity.

**4.3. Initial inspection**

- 4.3.1. When the user receipts the product, inspect the condition of the product and ensure the name plate comparing with order sheet.
- 4.3.2. Remove packing wrap or wooden box carefully. Inspect the product for any physical damage that may have occurred during shipment.
- 4.3.3. Check the product specification with product ordered. If an wrong product have been shipped, immediately report to our coordinator.

**5. Standard Features**



No.	Part Name	Q'ty	Description
1	Window / Indicator	1	PC / ABS
2	Cover	1	Aluminium die casting (ADC12), Stainless steel (CF8M)
3	Captive Cover Bolt	4	Stainless steel
4	Name Plate	1	Stainless steel (A240 T304)
5	Shaft	1	Stainless steel (G4303 SUS303, A276 S316)
6	Cam	2	PC
7	Switch	2	Refer to the clause "2. Ordering Information ② Switch type"
8	Body	1	Aluminium die-casting(ADC12), Stainless steel(CF8M)
9	Terminal Strip	1	8P (9~14P available)
10	Earth Lug	2	Stainless steel
11	Blanking Element	2	[Sticker. If required by customer, optionally used Exp type plug-19r0]

## 6. Installation

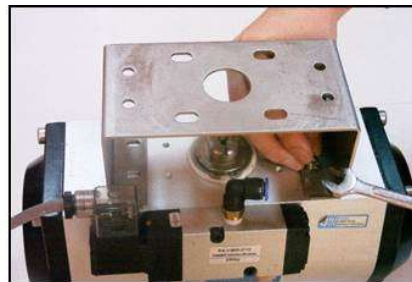
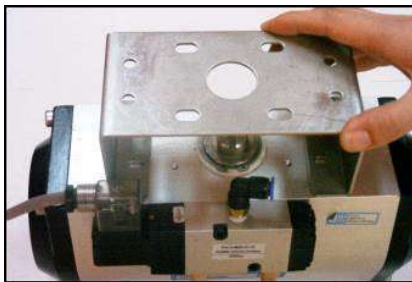
### 6.1. Mounting bracket



**Caution ;** Where limit switch box or one of parts are to be moved, installed, disassembled, reassembled by a hand, care must not be taken to cause injury by the harmful sharp edges of corners or rough surfaces or residual electricity.

6.1.1. HKC shall supply a NAMUR VDI/VDE standards' bracket and a fixing stuff for mounting on actuator. Brackets are able to applied any type of valves ; manual valve, linear valve, pneumatic rotary valve.

- ① Ensure valve actuator alignment (fully open or closed).
- ② Place the mounting bracket on a horizontal plane of actuator
- ③ Tighten the bolts enclosed in a box using a proper tool.



### 6.2. Mounting limit switch box



**Caution ;**

**Do not attempt to work on limit switch box without first shutting off incoming power**

- 6.2.1. Prior to mounting the limit switch box must be checked for any damage.
- 6.2.2. Damaged parts must be replaced by original spare parts.
- 6.2.3. Limit switch boxes are available with a NAMUR shaft that enables direct attachment to actuator pinion without a coupler. These shafts feature a 4mm wide tang that engages the 4mm slot in NAMUR actuators.

- ① Check to be sure the drive slot on the top of the actuator and the shaft of switch box are the same direction.
- ② Insert the shaft of switch box carefully into the mounting bracket.
- ③ Tighten the bolts enclosed in a box using a proper tool.
- ④ Check the connection of shaft being assembled correctly.



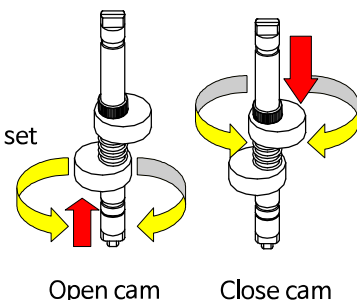
### 6.3. Cam setting



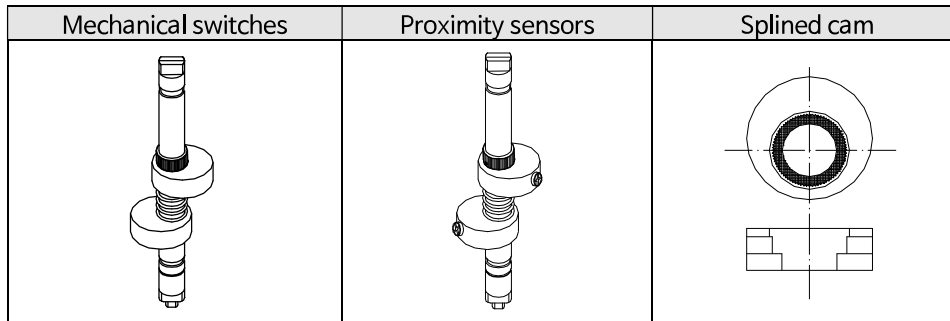
**Note :**

**Basically, cams shall be set by manufacturer before shipment.**

- 6.3.1. The colour of cams harmonized with position indicator help us to set the cams easily without wiring diagram. Cams shall be easily set without tool. APL series cams are splined and can be setting lift up or push down the cam from gear by hand in a seconds without setting tools. Self-locking, spring loading make never slip out of adjustment.



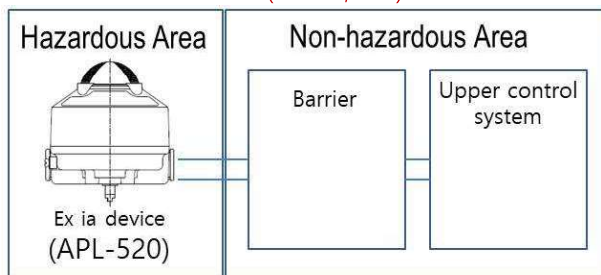
- 6.3.2. Loosen the captive cover bolts with an applicable tool. (L-Hex. Wrench recommended)
- 6.3.3. Turn the cover counter clockwise to open carefully.
- 6.3.4. Open cam setting
  - ① Electric power or air supply of valve actuator on to operate the actuator fully open
  - ② Lift the bottom yellow cam [(optional green)-17 r0] up and rotate it until the switch is activated.
  - ③ And then release it. Cam shall be back into a stable position by itself.
- 6.3.5. Close cam setting
  - ① Electric power or air supply of valve actuator off to operate the actuator fully close
  - ② Push the upper [red - 17 rev0] cam down and rotate it until the switch is activated.
  - ③ And then release it. Cam shall be back into a stable position by itself.



**6.4. Wiring**

  **Danger ; HAZARDOUS VOLTAGE. No electrical power should be connected until all wiring and limit switch adjustments have been completely.**

- 6.4.1. Open circuit before removing cover, and seal required within 50mm (2 inch) of the enclosure by CSA.
- 6.4.2. APL limit switch box enclosure feature prewired switches. All user connections are made at a numbered terminal strip. A wiring diagram, located inside the cover, indicates which terminal numbers correspond to switch contacts, such as normally open (NO), normally closed (NC), etc. Follow the wiring diagram and electrical code to connect the switches to your system.
- 6.4.3. [APL-5 limit switch box has two cable entries on the body. User or installer must apply wiring through the cable entry with a cable gland which meets the type of protection.
- 6.4.4. If any cable entry is remained after wiring, it shall be strictly protected suitable blanking plug. The cable gland and the blanking plug shall be applied by installer or user. --- 20r0] [The wiring drawing for each model is attached with a sticker inside the enclosure. --- 22 r0]
- 6.4.5. [When installing an intrinsically safe device (APL-820N/S) in an explosion-proof area, it must be used together with an intrinsically safe related device (Barrier, etc.) certified as an IECEx Ex ia grade, and the related device (Barrier, etc.) must be installed in a non-hazardous area.

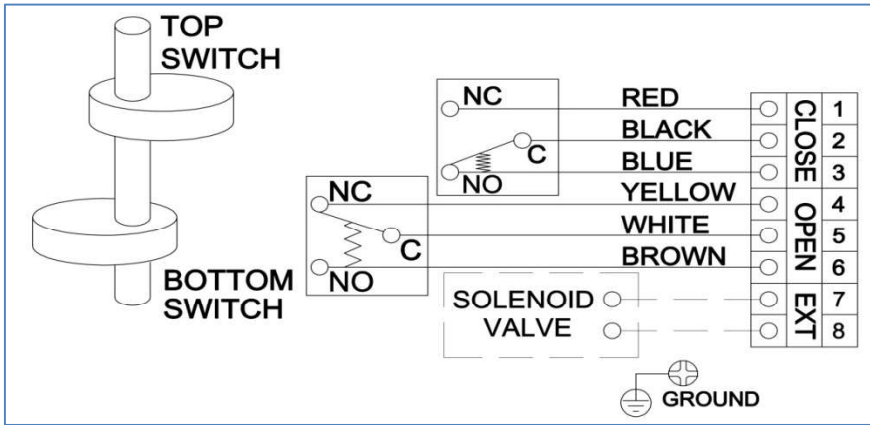


Any certified devices with applicable division, group or zone and group approval and with the following parameters:

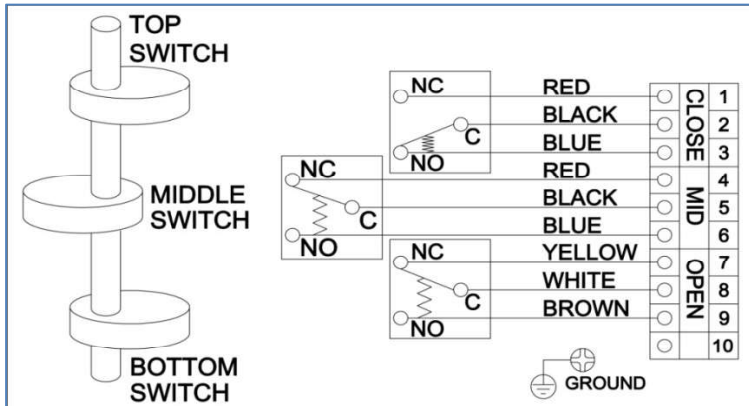
Division	Zone
$V_{oc} \leq V_{max}$	$U_o \leq U_i$
$I_{sc} \leq I_{max}$	$I_o \leq I_i$
$P_o \leq P_{max}$	$P_o \leq P_i$
$C_a \geq C_i + C_{cable}$	$C_o \geq C_i + C_{cable}$
$L_a \geq L_i + L_{cable}$	$L_o \geq L_i + L_{cable}$

----- 22 r0]

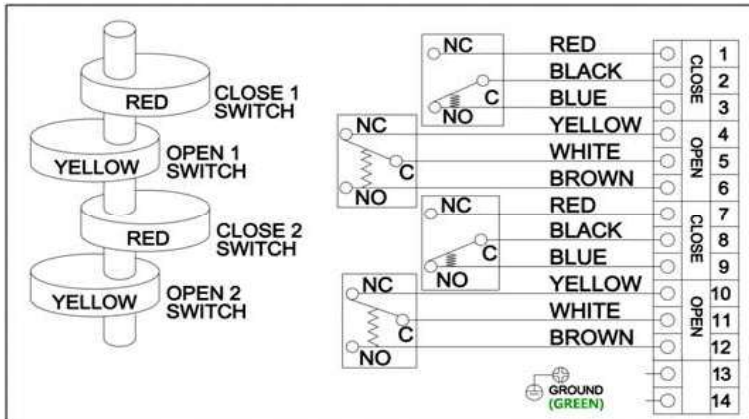
① Mechanical Switch (2 SPDT)



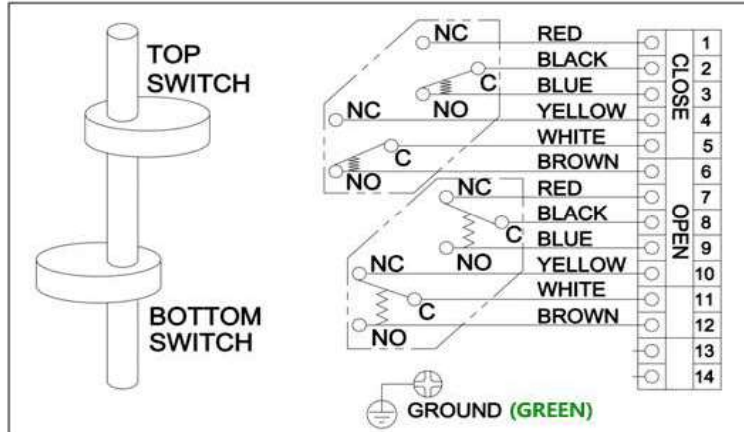
② Mechanical Switch (3 SPDT)



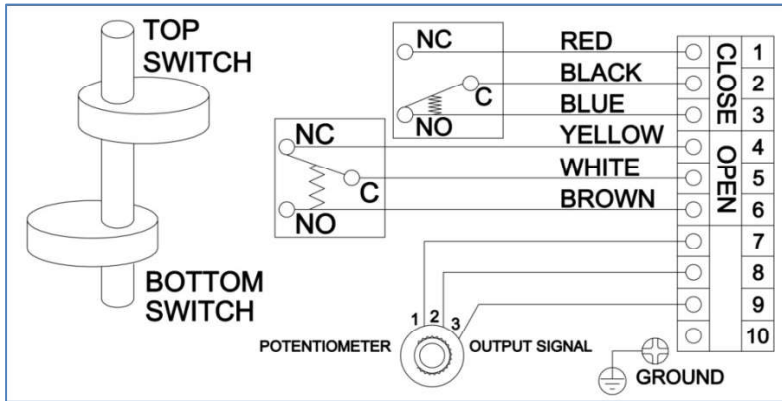
③ Mechanical Switch (4 SPDT)



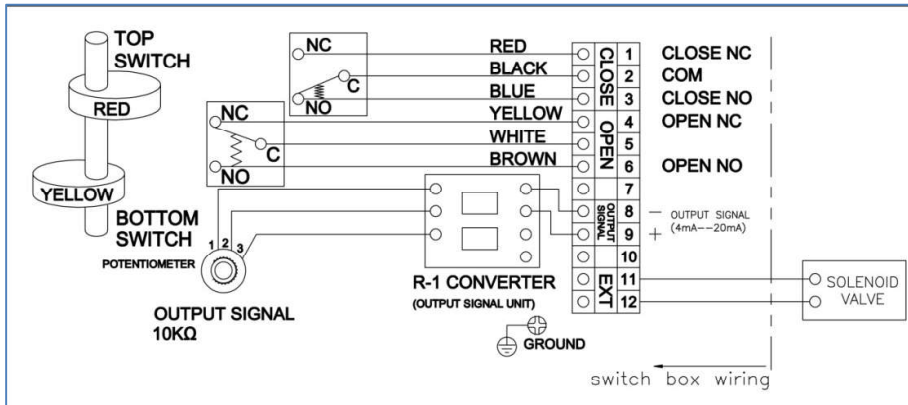
④ Mechanical Switch (2 DPDT)



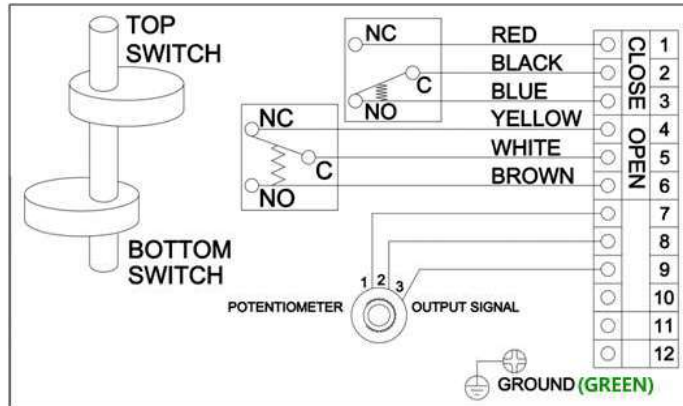
⑤ Mechanical Switch (2 SPDT) with Potentiometer



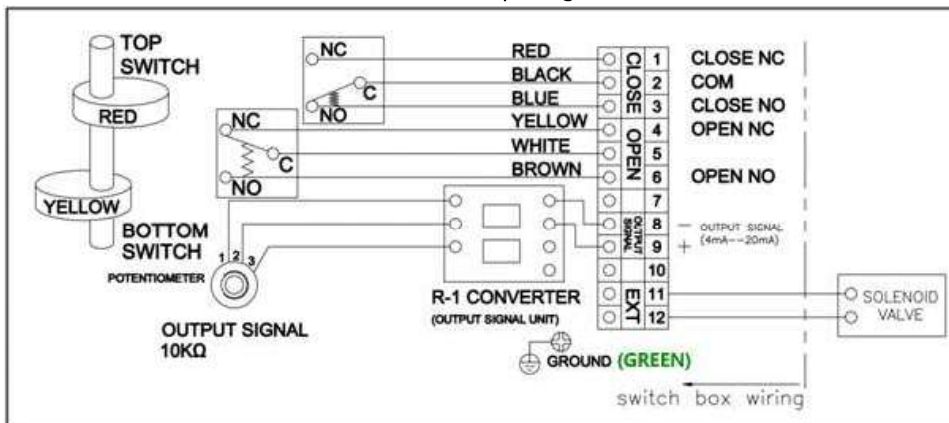
⑥ Mechanical Switch (2 SPDT) with Signal Unit



⑦ Mechanical Switch (2 SPDT) with output potentiometer



⑧ Mechanical Switch (2 SPDT) with current output signal



Caution ;  
Grounding should be connected until all wiring had been completely.

Internal grounding wire square shall be min. 2SQ recommended.  
External grounding wire square shall be min. 4SQ recommended.

**6.5. Setting for Position Transmitter Unit (APL- 5\*6)**

- 6.5.1. Potentiometer reads the current position of actuator and transfers a resistance value to a current position transmitter card. Transmitter indicates the actuator position throughout the stroke by a 4~20mA output signal.
- 6.5.2. Technical Features
 

① Power Supply Range	12.5 ~ 37V dc (24V typical)
② Current Signal Output	4~20mA
③ Max. Load Resistance	Max. Resistance (ohm) = (Supply voltage - 12.5) / 0.02
④ Potentiometer	0~500 ohm / 10k ohm
⑤ Operating Temperature	-20 ~ 60 °C
⑥ Dimension	40 * 60 * 15



- 6.5.3. Calibration Potentiometer
  - ① Apply power or air to the actuator to operate fully closed position
  - ② Connect an ohm meter to P1 and P3 resistances, the values shall be approximately 1kΩ.
  - ③ Loosen the shaft gear and connect the ohm meter to P1 and P3 and gently rotate until 80 ~ 120 ohm is achieved (100 Ohm preferred). While maintaining the value, tighten a lock screw with a hex wrench.
- 6.5.4. Calibration Zero Span
 

Zero span setting has been calibrated by manufacturer. However if re-calibration is required

  - ① Operate a actuator to 50% position and then fully closed position.
  - ② When the actuator is in the fully closed position, adjust the “zero” button on the card until a value of 20mA is achieved.

**7. Maintenance**



**Caution:**

- Shut off incoming power or air supply on the valve actuator before maintenance limit switch box.
- Be sure that the area is clean before disassemble and maintenance limit switch box. Clean all parts and housing before re-assemble.
- Refer to the part list when ordering replacement or spare parts.



- 7.1. Maintenance, under normal conditions at six month intervals or 10,000 cycle operation. But when conditions are more severe, more frequent inspections may be required.
  - 7.1.1. Ensure valve actuator alignment. [If the alignment among the valve, actuator and this limit switch box are not correct, it can be a cause of damage on shaft due to metallic fatigue during operating. -- - 20 r1]
  - 7.1.2. Ensure wiring is insulated, connected and terminated properly
  - 7.1.3. Ensure all screws are present and tight
  - 7.1.4. Ensure cleanliness of internal electrical devices
  - 7.1.5. Ensure conduit connections are installed properly and are dry
  - 7.1.6. Check internal devices for condensation
  - 7.1.7. Check enclosure O rings seals and verify that the O ring is not pinched between housing
  - 7.1.8. Visually inspect during open/close cycle
  - 7.1.9. Inspect identification labels for ware and replace if necessary



**Warning :**

*Flameproof enclosure! Before opening, ensure the absence of gas, dust and voltage.  
Treat cover with care. Gap surfaces must not be damaged or dirtied in any way.*

## 8. Inspection

- 8.1. The limit switch box should be inspected upon receipt to ensure that no damage has been sustained on transit.
- 8.2. Check the item and quantity of products with packing list or related documents.
- 8.3. Check the limit switch box o-ring. Where damage on it, it caused the corrosion of internal parts.
- 8.4. Check the adjustment of cams. Cams shall be released when those have been used for a long period of operating. If do so, they don't work correctly with switches.

## 9. Storage

The products must be stored in a clean, cool and dry area. The unit shall be stored with the cover installed and the conduit openings sealed. Storage must be off the floor, covered with a sealed dust protector.

## 10. Trouble shooting

The following instructions are offered for the most common difficulties encounter during installation and start-up.

### Signal fails to main control room.

- ① Check the wiring of limit switch box in accordance with wiring diagram.
- ② Check where the cams or switches are damaged or broken.
- ③ Check the main signal wire from the terminal strip.
- ④ Re-set the limit switch box.
- ⑤ Verify the current position transmitter resistance value.
- ⑥ Check potentiometer gear jamming.
- ⑦ Check the zero and span calibration.
- ⑧ Check the card damaged or not.

## 11. Tools

- ① 1 Set Metric Allen Key (Hex Wrench)
- ② 1 Set Screw Driver
- ③ 1 Set Metric Spanner
- ④ 1 Wire Stripper long Nose
- ⑤ 1 Needle nose plier
- ⑥ 1 Multi Meter (AC, DC, Resistance)
- ⑦ 1 ohm Meter (0~25mA) : if applicable 16 adapted

## 12. Installation and Maintenance Tips

For any installation and maintenance work, the following should be observed :



**Caution :**

- ✓ *A regular inspection and maintenance performed by qualified and trained personnel*
  - ✓ *When working in potentially explosive areas, observe the standard EN 60079-14 "Electrical Installations in Hazardous Areas".*
  - ✓ *Work at the opening valve position monitor under voltage must only be performed if it is assured that for the duration of the work there is no danger of explosion.*
  - ✓ *Observe additional national regulations.*
- 12.1. Check the limit switch box visually. Ensure that no outside damage or changes are visible. The electric connecting cables must be without damage and wired correctly.
  - 12.2. Cable entries, cable glands, plugs etc. have to be checked for correct tightness and sealing.
  - 12.3. Check whether Ex-connections are fastened correctly.
  - 12.4. Take care of possible discolouration of the terminals and wires.
  - 12.5. Check the flame path gaps of flameproof enclosures for dirt and corrosion. Since the dimensions of all Ex gaps are strictly defined and inspected, no mechanical work shall be performed on them.
  - 12.6. Ensure that all housing covers are handled carefully and that the seals are checked.
  - 12.7. All cable has to be checked.

- 12.8. If defects which affect the safety are detected during maintenance, repair measures have to be taken immediately.
- 12.9. Any kind of surface coating for the gap surface shall not be permitted.
- 12.10. When exchanging parts, seals etc. only original spare parts shall be used.

### 13. [APL-5 series construction summary

As of: 2022-08-11

Model	Construction	Electrical Rating	ATEX	IECEX
APL-510S/N	S: Stainless steel enclosure, N: Aluminum enclosure, Mechanical, 2-SPDT, Wonwoo SZM-V16-5FA-61 or Zippy VA2-16	CSA: 250V max, 4A max IECEX: 250Vac max, 15A max	II 2 G Ex db IIC T6, II 2 D Ex tb IIIC T85°C Zippy: -40°C~60°C, Wonwoo: -20°C~60°C	Ex db IIC T6, Ex tb IIIC T85°C Zippy: -40°C~60°C, Wonwoo: -20°C~60°C
APL-511S/N	S: Stainless steel enclosure, N: Aluminum enclosure, Mechanical, 3-SPDT, Wonwoo SZM-V16-5FA-61 or Zippy VA2-16	CSA: 250V max, 4A max IECEX: 250Vac max, 15A max	II 2 G Ex db IIC T6, II 2 D Ex tb IIIC T85°C Zippy: -40°C~60°C, Wonwoo: -20°C~60°C	Ex db IIC T6, Ex tb IIIC T85°C Zippy: -40°C~60°C, Wonwoo: -20°C~60°C
APL-512S/N	S: Stainless steel enclosure, N: Aluminum enclosure, Mechanical, 4-SPDT, Wonwoo SZM-V16-5FA-61 or Zippy VA2-16	CSA: 250V max, 4A max IECEX: 250Vac max, 15A max	II 2 G Ex db IIC T6, II 2 D Ex tb IIIC T85°C Zippy: -40°C~60°C, Wonwoo: -20°C~60°C	Ex db IIC T6, Ex tb IIIC T85°C Zippy: -40°C~60°C, Wonwoo: -20°C~60°C
APL-513S/N	S: Stainless steel enclosure, N: Aluminum enclosure, Mechanical, 2-SPST, Wonwoo SZM-V16-5FA-61 or Zippy VA2-16	CSA: 250V max, 4A max IECEX: 250Vac max, 15A max	II 2 G Ex db IIC T6, II 2 D Ex tb IIIC T85°C Zippy: -40°C~60°C, Wonwoo: -20°C~60°C	Ex db IIC T6, Ex tb IIIC T85°C Zippy: -40°C~60°C, Wonwoo: -20°C~60°C
APL-514S/N	S: Stainless steel enclosure, N: Aluminum enclosure, Mechanical, 2-DPDT, Omron DZ-10GW-1B	CSA: 250V max, 4A max IECEX: 250V max, 4A max	II 2 G Ex db IIC T6, II 2 D Ex tb IIIC T85°C -25°C~60°C	Ex db IIC T6, Ex tb IIIC T85°C -25°C~60°C
APL-515S/N	S: Stainless steel enclosure, N: Aluminum enclosure, Mechanical, 2-SPDT SZM-V16-5FA-61 or Zippy VA2-16 (+Potentiometer)	CSA: 250V max, 4A max IECEX: 250Vac max, 15A max	II 2 G Ex db IIC T6, II 2 D Ex tb IIIC T85°C Zippy: -40°C~60°C, Wonwoo: -20°C~60°C	Ex db IIC T6, Ex tb IIIC T85°C Zippy: -40°C~60°C, Wonwoo: -20°C~60°C
APL-516S/N	S: Stainless steel enclosure, N: Aluminum enclosure, Mechanical, 2-SPDT SZM-V16-5FA-61 or Zippy VA2-16 (+Signal unit(4-20mA))	CSA: 250V max, 4A max IECEX: 250Vac max, 15A max	II 2 G Ex db IIC T6, II 2 D Ex tb IIIC T85°C Zippy: -40°C~60°C, Wonwoo: -20°C~60°C	Ex db IIC T6, Ex tb IIIC T85°C Zippy: -40°C~60°C, Wonwoo: -20°C~60°C
APL-520S/N	S: Stainless steel enclosure, N: Aluminum enclosure, Proximity, P&F NJ2-V3-N	CSA: 8.2V nom, 3mA nom IECEX: 8Vdc, 15mA max	II 2 G Ex db, II 2 G Ex ia IIC T6 Gb, II 2 D Ex tb IIIC T85°C -25°C~60°C	Ex db IIC T6, Ex ia IIC T6, Ex tb IIIC T85°C -25°C~60°C
APL-521S/N	S: Stainless steel enclosure, N: Aluminum enclosure, Proximity, Autonics PS17-5DNU	IECEX: 10~30Vdc, 2~100 mA	II 2 G Ex db IIC T6, II 2 D Ex tb IIIC T85°C -25°C~60°C	Ex db IIC T6, Ex tb IIIC T85°C -25°C~60°C
APL-522S/N	S: Stainless steel enclosure, N: Aluminum enclosure, Proximity, P&F NJ4-12GM-N	CSA: 8.2V nom, 3mA nom IECEX: 8Vdc, 1kΩ max	II 2 G Ex db IIC T6, II 2 D Ex tb IIIC T85°C -25°C~60°C	Ex db IIC T6, Ex tb IIIC T85°C -25°C~60°C
APL-523S/N	S: Stainless steel enclosure, N: Aluminum enclosure, Proximity, P&F NBB2-V3	CSA: 30Vdc, 100mA max IECEX: 5~60Vdc, 4~100 mA	II 2 G Ex db IIC T6, II 2 D Ex tb IIIC T85°C -25°C~60°C	Ex db IIC T6, Ex tb IIIC T85°C -25°C~60°C

Model	Construction	Electrical Rating	ATEX	IECEX
APL-525S/N	S: Stainless steel enclosure, N: Aluminum enclosure, Proximity, P&F NJ2-V3-N +Potentiometer	CSA: 8.2V nom, 3mA nom IECEX: 8Vdc, 15mA max	II 2 G Ex db IIC T6, II 2 D Ex tb IIIC T85°C -25°C~60°C	Ex db IIC T6, Ex tb IIIC T85°C -25°C~60°C
APL-526S/N	S: Stainless steel enclosure, N: Aluminum enclosure, Proximity, P&F NJ2-V3-N +Signal unit(4-20mA)	CSA: 8.2V nom, 3mA nom IECEX: 8Vdc, 15mA max	II 2 G Ex db IIC T6, II 2 D Ex tb IIIC T85°C -25°C~60°C	Ex db IIC T6, Ex tb IIIC T85°C -25°C~60°C
APL-530AS/N	S: Stainless steel enclosure, N: Aluminum enclosure, Reed, MEC MS-B301	IECEX: 250V, 0.5A max	II 2 G Ex db IIC T6, II 2 D Ex tb IIIC T85°C -40°C~60°C	Ex db IIC T6, Ex tb IIIC T85°C -40°C~60°C
APL-530BS/N	S: Stainless steel enclosure, N: Aluminum enclosure, Reed, MK21 Model 85	CSA: 250V, 1A max IECEX: 250 V, 1A max	II 2 G Ex db IIC T6, II 2 D Ex tb IIIC T85°C -40°C~60°C	Ex db IIC T6, Ex tb IIIC T85°C -40°C~60°C
APL-531S/N	S: Stainless steel enclosure, N: Aluminum enclosure, Reed, MK21 Model 66	CSA: 180V, 0.5A max IECEX: 180V, 0.5A max	II 2 G Ex db IIC T6, II 2 D Ex tb IIIC T85°C -40°C~60°C	Ex db IIC T6, Ex tb IIIC T85°C -40°C~60°C
APL-532S/N	S: Stainless steel enclosure, N: Aluminum enclosure, Reed, MK21 Model 90	CSA: 175V, 0.5A max IECEX: 175V, 0.5A max	II 2 G Ex db IIC T6, II 2 D tb IIIC T85°C -40°C~60°C	Ex db IIC T6, Ex tb IIIC T85°C -40°C~60°C
APL-534S/N	S: Stainless steel enclosure, N: Aluminum enclosure, Reed, APH 634W	IECEX: 120Vdc, 3.5A max	II 2 G Ex db IIC T6, II 2 D Ex tb IIIC T85°C -40°C~60°C,	Ex db IIC T6 Gb, Ex tb IIIC T85°C -40°C~60°C,
APL-535S/N	S: Stainless steel enclosure, N: Aluminum enclosure, Reed, APH 933W	IECEX: 500Vdc, 3.0A max	II 2 G Ex db IIC T6, -60°C~60°C, II 2 D Ex tb IIIC T85°C, -50°C~60°C,	Ex db IIC T6 Gb, -60°C~60°C, Ex tb IIIC T85°C, -50°C~60°C
APL-536S/N	S: Stainless steel enclosure, N: Aluminum enclosure, Reed, APH 27103	IECEX: 350Vac/dc, 1A max	II 2 G Ex db IIC T6, -60°C~60°C, II 2 D Ex tb IIIC T85°C, -50°C~60°C,	Ex db IIC T6 Gb, -60°C~60°C, Ex tb IIIC T85°C, -50°C~60°C,
APL-5H1S/N	S: Stainless steel enclosure, N: Aluminum enclosure, Mechanical, 2-SPDT, Honeywell 11SX22-T Gold Plated	CSA: 250V, 4A max IECEX: 250V, 4A max	II 2 G Ex db IIC T6, II 2 D Ex tb IIIC T85°C -50°C~60°C	Ex db IIC T6, Ex tb IIIC T85°C -50°C~60°C
APL-5H2S/N	S: Stainless steel enclosure, N: Aluminum enclosure, Mechanical, 2-SPDT, Honeywell 12SX1-T Gold Plated	CSA: 125V, 1A max IECEX: 125V, 1A max	II 2 G Ex db IIC T6, II 2 D Ex tb IIIC T85°C -50°C~60°C	Ex db IIC T6, Ex tb IIIC T85°C -50°C~60°C
APL-5H3S/N	S: Stainless steel enclosure, N: Aluminum enclosure, Mechanical, 2-SPDT, Honeywell 13SX21-T Gold Plated	CSA: 125V, 1A max IECEX: 125V, 1A max	II 2 G Ex db IIC T6, II 2 D Ex tb IIIC T85°C -50°C~60°C	Ex db IIC T6, Ex tb IIIC T85°C -50°C~60°C
APL-5H4S/N	S: Stainless steel enclosure, N: Aluminum enclosure, Mechanical, 4-SPDT, Honeywell 11SX22-T Gold Plated	CSA: 250V, 4A max IECEX: 250V, 4A max	II 2 G Ex db IIC T6, II 2 D Ex tb IIIC T85°C -50°C~60°C	Ex db IIC T6, Ex tb IIIC T85°C -50°C~60°C
APL-5H5S/N	S: Stainless steel enclosure, N: Aluminum enclosure, Mechanical, 4-SPDT, Honeywell 12SX1-T Gold Plated	CSA: 125V, 1A max IECEX: 125V, 1A max	II 2 G Ex db IIC T6, II 2 D Ex tb IIIC T85°C -50°C~60°C	Ex db IIC T6, Ex tb IIIC T85°C -50°C~60°C

Model	Construction	Electrical Rating	ATEX	IECEX
APL-5H6S/N	S: Stainless steel enclosure, N: Aluminum enclosure, Mechanical, 4-SPDT, Honeywell 13SX21-T Gold Plated	CSA: 125V, 1A max IECEX: 125V, 1A max	II 2 G Ex db IIC T6, II 2 D Ex tb IIIC T85°C -50°C~60°C	Ex db IIC T6, Ex tb IIIC T85°C -50°C~60°C
<b>End Line</b>				

\* Notes :      Last initial "N" of Model name is aluminum alloy enclosure.  
                     Last initial "S" of Model name is stainless steel such as CF8(S30400) or CF8M(S31600) enclosure.  
                     ----- 22 r2]

# HKC

VALVE POSITION MONITOR  
APL-2 SERIES

## Installation, Operation & Maintenance Manual

Version 1.1, Rev.1



HKC Co., Ltd.

[www.hkcon.co.kr](http://www.hkcon.co.kr)

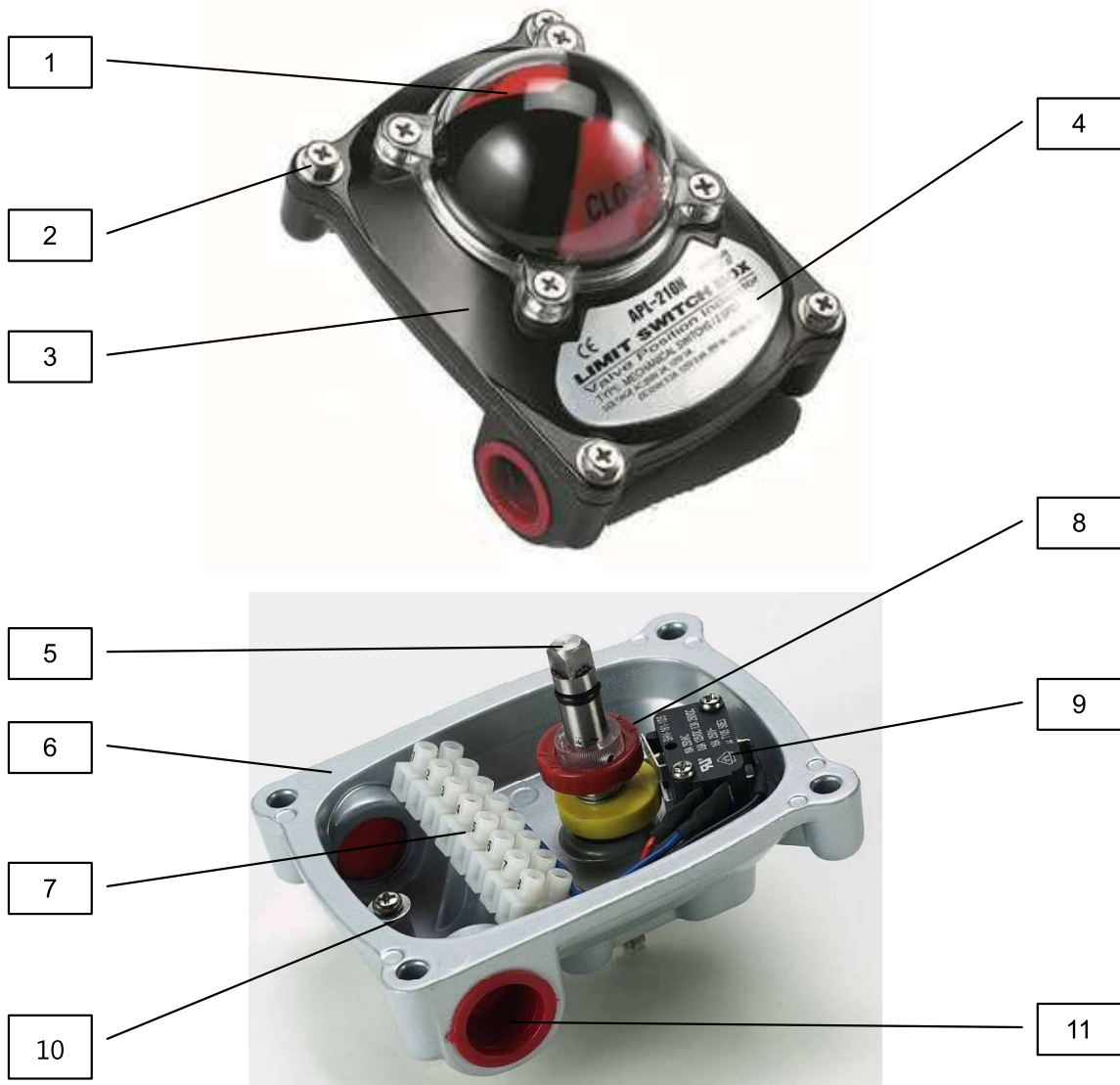


## Table of Contents

1	General.....	3
2	Ordering Information .....	3
3	Standard specification .....	3
4	Marking.....	3
5	Standard Features .....	4
6	Pre-Installation for.....	5
7	Installation.....	5
7.1	Mounting bracket .....	5
7.2	Mounting limit switch box .....	5
7.3	Setting cam .....	6
7.4	Wiring.....	7
8	Maintenance .....	8
9	Inspection.....	8
10	Storage .....	8
11	Trouble Shooting.....	8
12	Tools.....	8
13	Installation and Maintenance Tips .....	9



### 5 Standard Features



No.	Part Name	Q'ty	Description
1	Window / Indicator	1	PC / ABS
2	Captive Cover Bolt	4	Stainless steel
3	Cover	1	Stainless steel
4	Name Plate	1	Sticker
5	Shaft	1	Stainless steel
6	Body	1	Aluminum Die casting
7	Terminal Strip	2	8P (9~14P available)-
8	Cam	1	PC
9	Switch	1	Mechanical or Proximity type
10	Earth Lug	1	Stainless steel
11	Blanking Element	2	PC

## 6 Pre-Installation for

### ➤ Use in general service

Verify the nameplate to insure correct model number, switch type, voltage before installation or use.

## 7 Installation

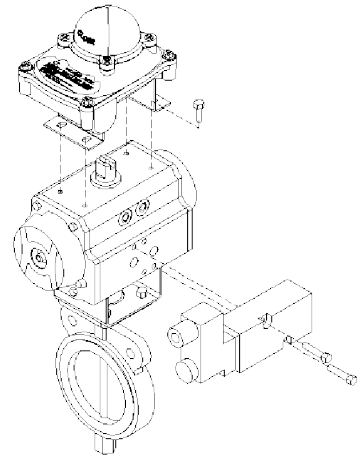
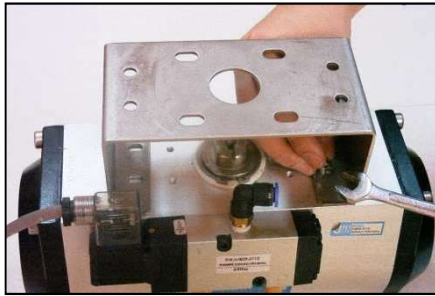
### 7.1 Mounting bracket

**Caution ;**

- ⚠ Where limit switch box or one of parts are to be moved, installed, disassembled, reassembled by a hand, care must be taken not to cause injury by the harmful sharp edges of corners or rough surfaces or residual electricity.**

HKC shall supply a NAMUR VDI/VDE standards' bracket and a fixing stuff for mounting on actuator. Bracket shall be applicable to any type of valves ; manual valve, linear valve, pneumatic rotary valve.

- Insure valve actuator alignment (fully open or closed).
- Place the mounting bracket on a horizontal plane of actuator
- Tighten the bolts enclosed in a box using a proper tool.



### 7.2 Mounting limit switch box

**Note :**

- ⚠ Prior to mounting the limit switch box must be checked for any damage.
- ⚠ Damaged parts must be replaced by original spare parts.

**Caution ;**

- ⚠ Do not attempt to work on limit switch box without first shutting off incoming power.**

Limit switch boxes are available with a NAMUR shaft that enables direct attachment to actuator pinion without a coupler. These shaft feature a 4mm wide tang that engages the 4mm slot in NAMUR actuators.

- Check to be sure the drive slot on the top of the actuator and the shaft of switch box are the same direction.
- Insert the shaft of switch box carefully into the mounting bracket.
- Tighten the bolts enclosed in a box using a proper tool.
- Check the connection of shaft being assembled correctly.



### 7.3 Setting cam

The color of cams harmonized with position indicator help us to set the cams easily without wiring diagram. Cams shall be easily set without tool. APL series cams are splined and can be setting lift up or push down the cam from gear by hand in a seconds without setting tools. Self-locking, spring loading make never slip out of adjustment.

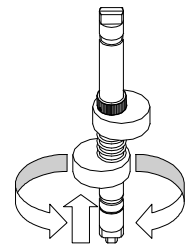
**Note :**

✚ **Basically, cams shall be set by manufacturer before shipment.**

- Un-tighten the captive cover bolts with a applicable tool. (L-Hex. Wrench recommended)
- Remove the cover carefully.

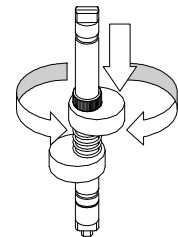
- Open cam setting

- ✚ Electric power or air supply of valve actuator on to operate the actuator fully open
- ✚ Lift the bottom yellow cam up and rotate it until the switch is activated.
- ✚ And then release it. Cam shall be back into a stable position by itself.



- Close cam setting

- ✚ Electric power or air supply of valve actuator off to operate the actuator fully close
- ✚ Push the upper cam down and rotate it until the switch is activated.
- ✚ And then release it. Cam shall be back into a stable position by itself.



Mechanical switches	Proximity sensors	Splined cam

## 7.4 Wiring

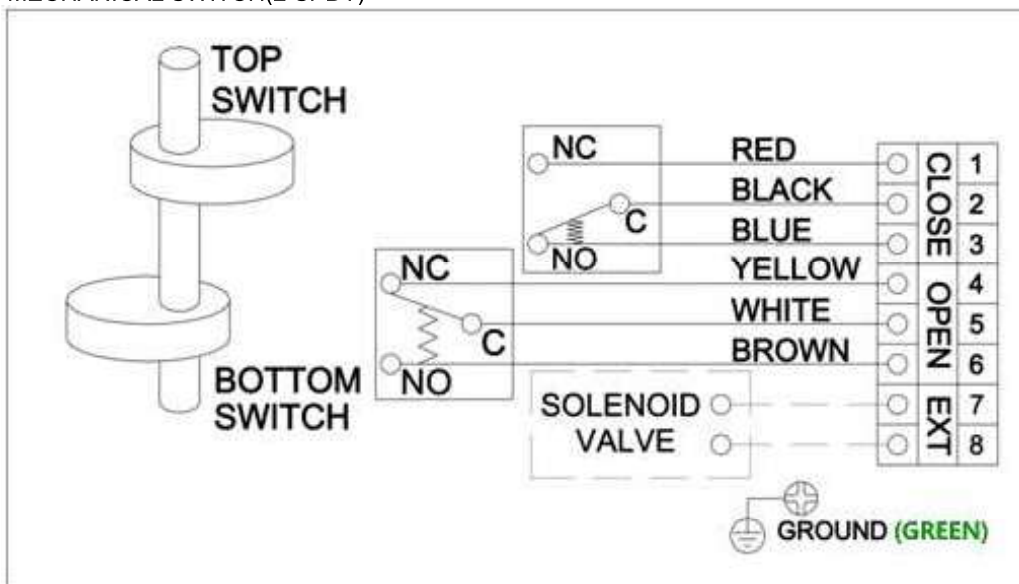
**Danger ;**

**⚠ HAZARDOUS VOLTAGE.** No electrical power should be connected until all wiring and limit switch adjustments have been completely.

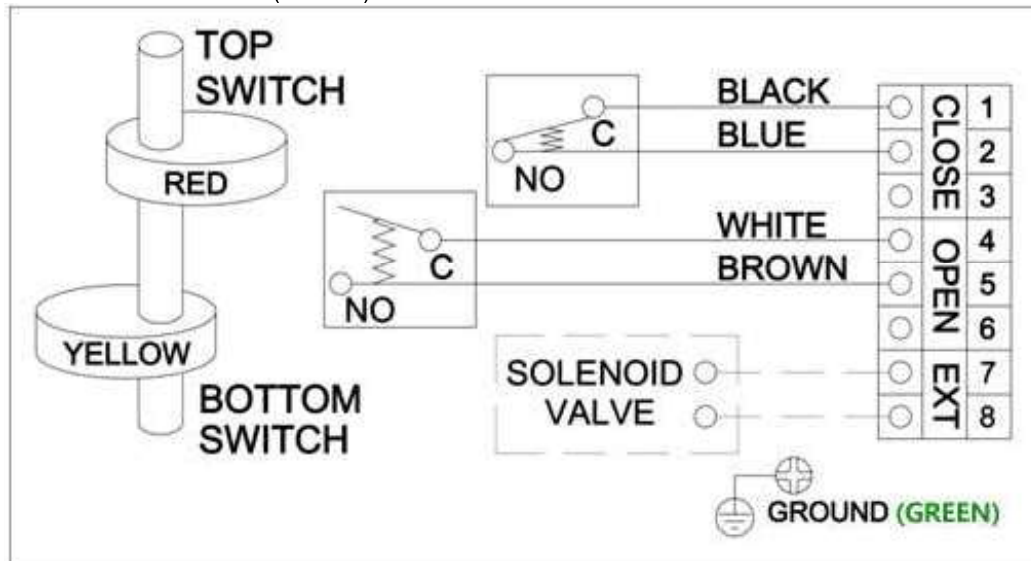
APL limit switch box enclosure feature prewired switches. All user connections are made at a numbered terminal strip. A wiring diagram, located inside the cover, indicates which terminal numbers correspond to switch contacts, such as normally open (NO), normally closed (NC), etc. Follow the wiring diagram and electrical code to connect the switches to your system.

Solenoid valve may also be wired through the APL enclosure. Two auxiliary terminals are included as standard. APL limit switch box has two cable entries on the body and supply a blanking plug not a cable gland which meet the type of protection. Cable gland shall be applied by installer or user.

➤ MECHANICAL SWITCH(2 SPDT)



➤ MECHANICAL SWITCH(2 SPST)



**Note ;**




- ⚡ Grounding should be connected until all wiring have been completely.
- ⚡ Internal grounding wire square shall be min.2SQ. recommended.
- ⚡ External grounding wire square shall be min.4SQ. recommended.

## 8 Maintenance

HKC APL 2..N Series limit switch box is designed to provide accurate and reliable valve position signaling and indicating of most valves or actuators manufactured

---



**Caution :**

-  **Shut off incoming power or air supply on the valve actuator before maintenance limit switch box.**
  -  **Be sure that the area is clean before disassemble and maintenance limit switch box. Clean all parts and housing before re-assemble.**
  -  **Refers to the part list when ordering replacement or spare parts.**
- 

Maintenance, under normal conditions at six month intervals or 100,000 cycle operation. But when conditions are more severe, more frequent inspections may be required.

- Insure valve actuator alignment
  - Insure wiring is insulated, connected and terminated properly
  - Insure all screws are present and tight
  - Insure conduit connections are installed properly and are dry
  - Check internal devices for condensation
  - Check enclosure O rings seals and verify that the O ring is not pinched between housing
  - Visually inspect during open/close cycle
  - Inspect identification labels for ware and replace if necessary
- 

**Warning :**

-  **Flameproof enclosure! Before opening ensure the absence of gas and voltage.**
  -  **Treat cover with care. Gap surface must not be damaged or dirtied in any way**
- 

## 9 Inspection

- Check the item and quantity of products with packing list or related documents.
- Check the limit switch box o-ring. Where a damage on it. It caused the corrosion of internal parts.
- Check the adjustment of cams. Cams shall be released when those have been used for a long period of operating. If do so, they don't work correctly with switches.

## 10 Storage

The products must be stored in a clean, cool and dry area. The unit shall be stored with the cover installed and the conduit openings sealed. Storage must be off the floor, covered with a sealed dust protector.

## 11 Trouble Shooting

The following instructions are offered for the most common difficulties encounter during installation and start-up.

**Signal fails to main control room.**

- Check the wiring of limit switch box in accordance with wiring diagram.
- Check where the cams or switches are damaged or broken.
- Check the main signal wire from the terminal strip.
- Re-set the limit switch box
- Check potentiometer gear jamming
- Check the zero and span calibration
- Check the card damaged or not.

## 12 Tools





- 1 Set Metric Allen key (Hex Wrench)
- 1 Set Screw drivers
- 1 Set Metric spanner
- 1 Wire Stripper long nose
- 1 Needle nose pliers
- 1 Multi Meter (AC, DC, Resistance) – Except APL-2 Series.
- 1 Ohm Meter (0~25mA) : If APL - 16 adapted – Except APL-2 Series.

### 13 Installation and Maintenance Tips

For any installation and maintenance work, the following should be observed :

---

**Caution :**

-  ***A regular inspection and maintenance performed by qualified and trained personnel***
  -  ***When working in potentially explosive areas, observe the standard EN 60079-14 "Electrical Installations in Hazardous Areas".***
  -  ***Work at the open actuator under voltage must only be performed if it is assured that for the duration of the work there is no danger of explosion.***
  -  ***Observe additional national regulations.***
- 

- Check the limit switch box visually. Ensure that no outside damage or changes are visible. The electric connecting cables must be without damage and wired correctly.
  - Cable entries, cable glands, plugs etc. have to be checked for correct tightness and sealing.
  - Check whether Ex-connections are fastened correctly.
  - Take care of possible discolorations of the terminals and wires.
  - Check the flame path gaps of flameproof enclosures for dirt and corrosion. Since the dimensions of all Ex gaps are strictly defined and inspected, no mechanical work shall be performed on them.
  - Ensure that all housing covers are handled carefully and that the seals are checked.
  - All cables have to be checked.
  - If defects which affect the safety are detected during maintenance, repair measures have to be taken immediately.
  - Any kind of coating for the gap surface shall not be permitted.
  - When exchanging parts, seals etc. only original spare parts shall be used.
- 

**Warning :**

-  ***Flameproof enclosure! Before opening, ensure the absence of flammable gas and voltage.***
-



**HKC**  
CO., LTD.

# APL-2 Series Limit Switch Box Installation Operation & Maintenance Manual

---

This page is intentionally empty.