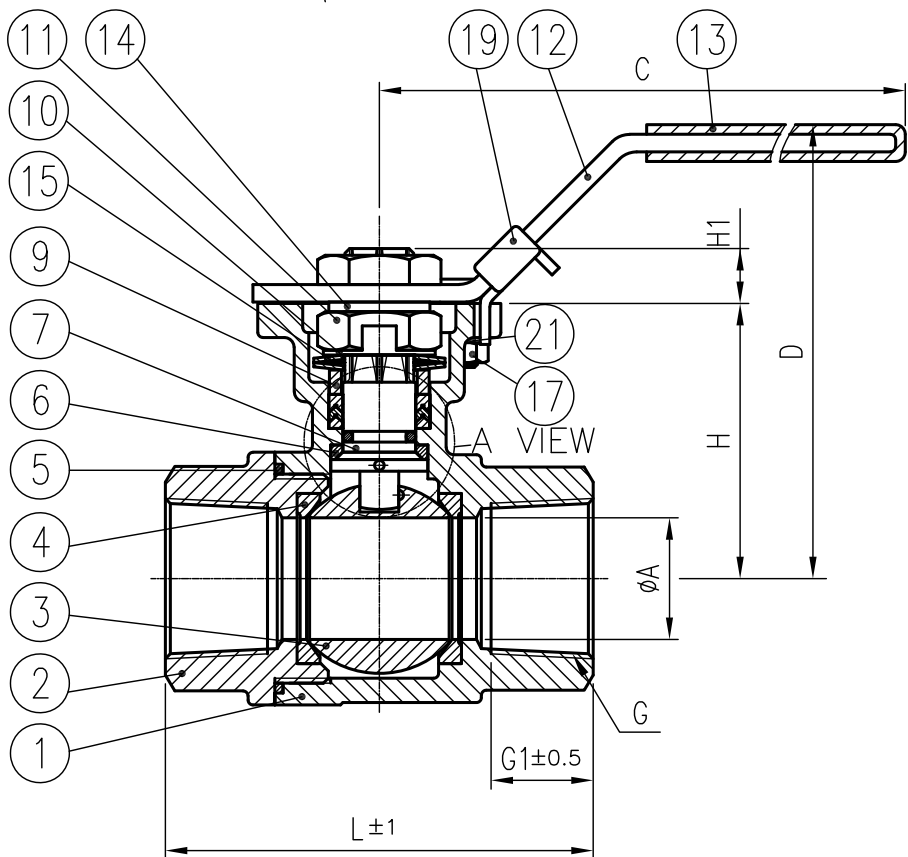
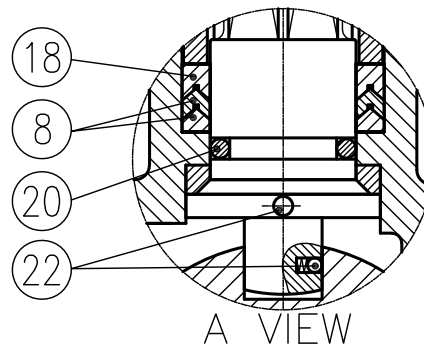


Series R502-10
 DIRECT MOUNT
 2-PIECE FULL PORT BALL VALVES
 1/4"~3" DN8~DN80
 THREADED ENDS 1000PSI

MATERIALS LIST

NO.	PART NAME	QTY	MATERIAL
1	Body	1	CF8M
2	End Cap	1	CF8M
3	Ball	1	SS316/CF8M
4	Seat	2	PTFE
5	Joint Gasket	1	PTFE
6	Thrust Washer	1	RTFE
7	Stem	1	SS316
8	Gland Packing	*	PTFE
9	Gland Bush	1	SS304
10	Stop Washer	1	SS304
11	Stem Nut	2	SS304
12	Handle	1	SS304
13	Handle Cover	1	VINYL
14	Stem Washer	1	SS304
15	Belleville Washer	2	SS301
16	Stop Pin	1	SS304
17	Pin Nut	1	SS304
18	Gland Packing	1	25% GLASS FIBER FILLED+ PTFE
19	Locking Device	1	SS304
20	O-Ring	1	VITON COATING PTFE
21	Washer	1	SS304
22	Anti-static Device	2	SS316



DIMENSIONS(mm)

PS: * For 1/4"~1/2"-1pcs, 3/4"~2"-2pcs, 2-1/2"~3"-3pcs

SIZE	ØA	B	C	D	ØE	ØF	G	G1	H	H1	L	ØM	ØN	ISO5211
1/4"	11.5	9	139	74	6	6	1/4" NPTor BSP	15	38.6	6.6	65	36	42	FOR F03 FOR F04
3/8"	12.5	9	139	74	6	6	3/8" NPTor BSP	15	38.6	6.6	65	36	42	FOR F03 FOR F04
1/2"	15	9	139	74	6	6	1/2" NPTor BSP	16	38.6	6.6	65	36	42	FOR F03 FOR F04
3/4"	20	9	139	82	6	6	3/4" NPTor BSP	17	46.1	7.1	74.6	36	42	FOR F03 FOR F04
1"	25	11	165	96	6.5	7	1" NPTor BSP	21	56.6	10.9	88	42	50	FOR F04 FOR F05
1-1/4"	32	11	165	100	6.5	7	1-1/4" NPTor BSP	22	61	10.9	102	42	50	FOR F04 FOR F05
1-1/2"	38	14	215	127	7.5	9	1-1/2" NPTor BSP	22.5	77.5	13.9	110	50	70	FOR F05 FOR F07
2"	50	14	215	134	7.5	9	2" NPTor BSP	26	85.2	13.9	125	50	70	FOR F05 FOR F07
2-1/2"	65	17	263	167	10	12	2-1/2" NPTor BSP	31	108.7	16.8	160.6	70	102	FOR F07 FOR F10
3"	80	17	313	175	10	12	3" NPTor BSP	34	117.4	18.1	178	70	102	FOR F07 FOR F10



RELEASED	NAME	DATE	DRAWING NAME	DRAWING NO.	VERSION	UNIT	SCALE						
CHECKED			2-PIECE FULL PORT BALL VALVES	HAGU240821001	0	mm	1 : 1						
CREATED	ADAM	2024/08/21	Series R502-10			PROJECTION							
						NO.	REV. NO.	REVISION		NAME		DATE	