



ZR 236-11Z-M20

- Snap action with constant contact pressure up to switching point
- 1 Cable entry M 20 x 1.5
- Thermoplastic enclosure
- Good resistance to oil and petroleum spirit
- Wide range of alternative actuators
- 30 mm x 58,5 mm x 30 mm
- Double-insulated
- Mounting details to EN 50047
- Actuator heads can be repositioned by 4 x 90°

Data

Ordering data

Product type description	ZR 236-11Z-M20
Article number (order number)	101153241
EAN (European Article Number)	4030661168630
eCl@ss number, version 12.0	27-27-26-01
eCl@ss number, version 11.0	27-27-26-01
eCl@ss number, version 9.0	27-27-26-01
ETIM number, version 7.0	EC000030
ETIM number, version 6.0	EC000030

Approvals - Standards

Certificates	cULus CCC
--------------	--------------

General data

Standards	BG-GS-ET-15 EN ISO 13849-1 EN IEC 60947-5-1
Housing construction form	Norm construction design
Actuator type to EN 50047	c
Housing material	Plastic, glass-fibre-reinforced
Gross weight	60 g

General data - Features

Safety functions	Yes
Number of auxiliary contacts	1
Number of safety contacts	1

Safety classification

Standards	EN IEC 60947-5-1
Mission time	20 Year(s)

Safety classification - Safety outputs

B _{10D} Normally-closed contact (NC)	20,000,000 Operations
---	-----------------------

Mechanical data

Actuating element	Roller plunger
Mechanical lifetime, minimum	20,000,000 Operations
Actuating force, minimum	9 N
Positive break force, minimum	19 N
Actuating speed, minimum	20 mm/min
Actuating speed, maximum	1 m/s
Note (Actuating speed)	Actuating speed with actuating angle 30° to switch axis

Mechanical data - Connection technique

Cable entry	1 x M20 x 1,5
Cable section, minimum	0.75 mm ²
Cable section, maximum	2.5 mm ²
Note	All indications including the conductor ferrules.
Terminal (mechanical)	Screw terminals

Mechanical data - Dimensions

Length of sensor	30 mm
Width of sensor	30 mm
Height of sensor	84 mm

Ambient conditions

IP Degree of protection	IP65 IP67
Ambient temperature	-30 ... +80 °C

Ambient conditions - Insulation values

Rated insulation voltage U_i	500 V
Rated impulse withstand voltage U_{imp}	6 kV

Electrical data

Thermal test current	10 A
Required rated short-circuit current	1,000 A
Utilisation category AC-15	230 VAC
Utilisation category AC-15	4 A
Utilisation category DC-13	24 VDC
Utilisation category DC-13	1 A
Switching element	1 NO contact, 1 NC contacts
Switching principle	Snap action
Bounce duration, maximum	3 ms
Maximale Schalthäufigkeit	5,000 /h

Switchover time, maximum 5.5 ms

Material of the contacts, electrical Silver

Pictures

Product picture (catalogue individual photo)



ID: k236rf01

| 940.3 kB | .jpg | 352.778 x 798.336 mm - 1000 x 2263 px - 72 dpi

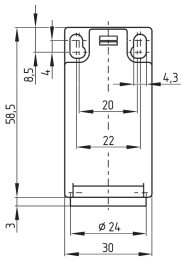
| 127.4 kB | .png | 74.083 x 167.56900000000002 mm - 210 x 475 px - 72 dpi

| 28.9 kB | .png | 74.083 x 74.083 mm - 210 x 210 px - 72 dpi

| 11.6 MB | .png | 169.333 x 383.201 mm - 2000 x 4526 px - 300 dpi

| 26.3 kB | .jpg | 54.681000000000004 x 123.47200000000001 mm - 155 x 350 px - 72 dpi

Dimensional drawing basic component

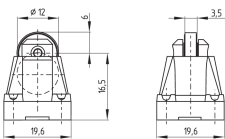


ID: 1-236g01

| 4.0 kB | .png | 74.083 x 73.378 mm - 210 x 208 px - 72 dpi

| 115.0 kB | .jpg | 352.778 x 349.956 mm - 1000 x 992 px - 72 dpi

Dimensional drawing actuator

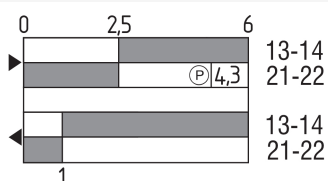


ID: 1r236g01

| 7.4 kB | .png | 74.083 x 51.858000000000004 mm - 210 x 147 px - 72 dpi

| 76.5 kB | .jpg | 352.778 x 247.29700000000003 mm - 1000 x 701 px - 72 dpi

Switch travel diagram



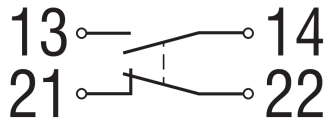
ID: kr235s12

| 25.8 kB | .cdr |

| 2.4 kB | .png | 74.083 x 39.158 mm - 210 x 111 px - 72 dpi

| 69.2 kB | .jpg | 352.778 x 187.32500000000002 mm - 1000 x 531 px - 72 dpi

Diagram



ID: k1o1sk01

| 52.2 kB | .jpg | 352.778 x 143.58100000000002 mm - 1000 x 407 px - 72 dpi

| 2.6 kB | .png | 74.083 x 29.986 mm - 210 x 85 px - 72 dpi

Schmersal Ltd., Sparrowhawk Close, WR14 1GL Malvern

The details and data referred to have been carefully checked. Images may diverge from original. Further technical data can be found in the manual. Technical amendments and errors possible.

Generated on: 27/04/2026, 07:50