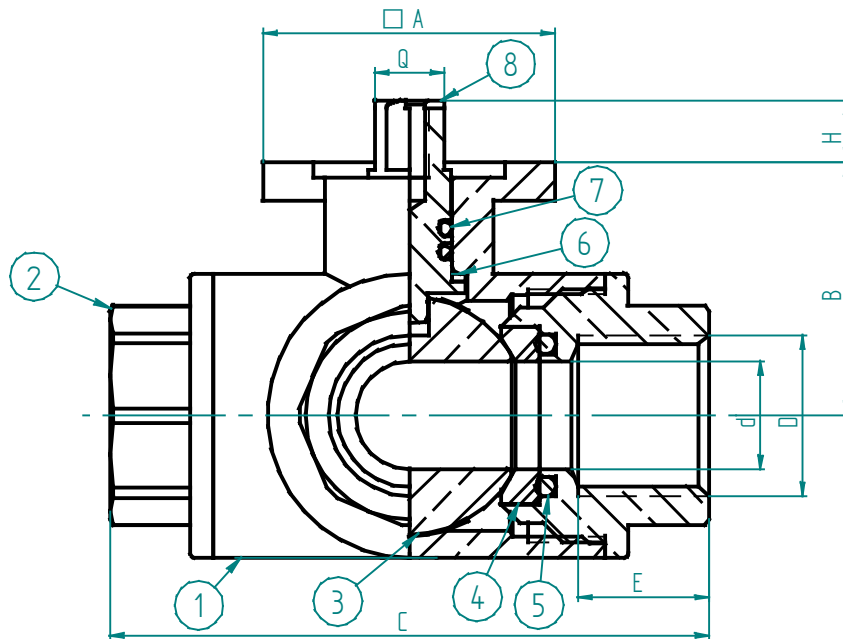


ART. 173 BALL VALVE 3-WAY T-SHAPED

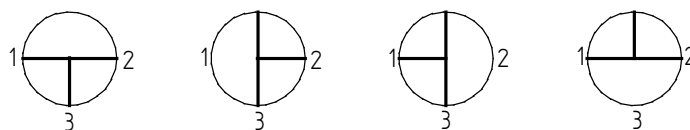


POS.	DESCRIPTION	TREATMENT	MATERIAL	NORME	Q.TY
1	Body hot pressed brass	Chrome plated	CW617N	UNI EN 12165	1
2	Nipple hot pressed brass	Chrome plated	CW617N	UNI EN 12165	3
3	Ball	Chrome plated	CW617N	UNI EN 12165	1
4	P.T.F.E. Ring	/	P.T.F.E.	BS6564	4
5	Oring	/	FKM 70SH	EN 549	4
6	Washer	/	P.T.F.E.	BS6564	1
7	Oring	/	FKM 70SH	EN 549	2
8	Stem	Nickel plated	CW614N	UNI EN 12164	1

D	¼									
A	38 x 38	38 x 38	38 x 38	50 x 50	50 x 50	50 x 50	70 x 70	70 x 70		
B	30	30	33	42	47	52	70	79.5		
C	65	65	78	87	105	118	134	161		
E	15	15	17	18	21	23.5	23.5	27.5		
H	10	10	10	12	12	12	16	16		
Q	9 x 9	9 x 9	9 x 9	11 x 11	11 x 11	11 x 11	14 x 14	14 x 14		
Drilling	F03	F03	F03	F05	F05	F05	F07	F07		
Weight gr	415	385	565	880	1470	1990	3640	6150		

ISO 5211 MOUNTING PAD

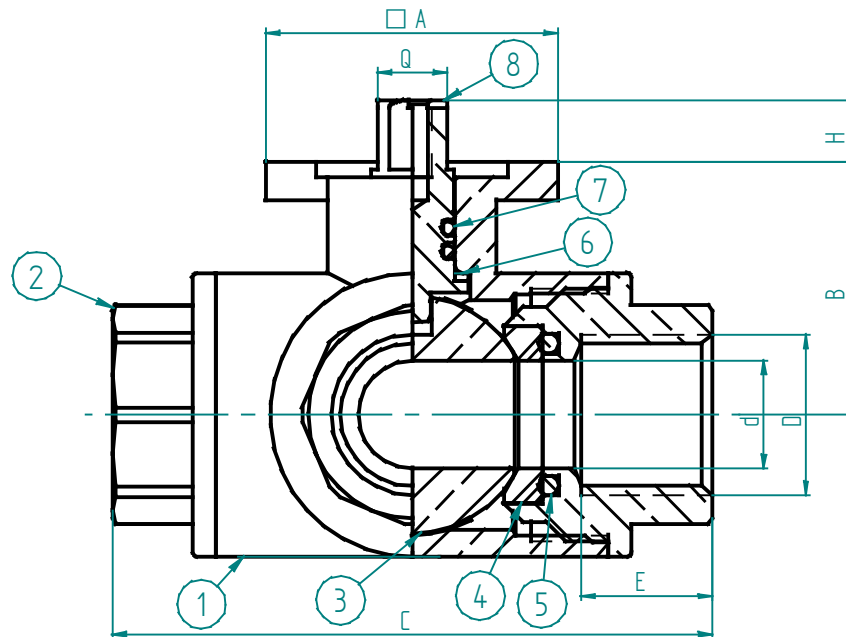
POSITION:



PRESSURE RANGE

1/4

ART. 174 BALL VALVE 3-WAY L-SHAPED



POS.	DESCRIPTION	TREATMENT	MATERIAL	NORME	Q.TY
1	Body hot pressed brass	Chrome plated	CW617N	UNI EN 12165	1
2	Nipple hot pressed brass	Chrome plated	CW617N	UNI EN 12165	3
3	Ball	Chrome plated	CW617N	UNI EN 12165	1
4	P.T.F.E. Ring	/	P.T.F.E.	BS6564	4
5	O-ring	/	FKM 70SH	EN 549	4
6	Washer	/	P.T.F.E.	BS6564	1
7	O-ring	/	FKM 70SH	EN 549	2
8	Stem	Nickel plated	CW614N	UNI EN 12164	1

PRESSURE RANGE

1/4