

## UNIVERSAL PIPELINE CONNECTORS UCX41

### DESCRIPTION

The UCX series pipeline connectors are used in steam systems where a simple and economic maintenance program is desired.

Typical installations are drip service on steam lines, tracing applications and small process equipment.

The two-bolt flange connector allows for fast trap replacement without disturbing the pipelines.

The UCX connector fits the universal swivel connection steam traps.

### MAIN FEATURES

Remains permanently in-line making the replacement of new traps easier and quicker.

Steam traps can swivel 360°, allowing any pipe orientation during installation.

The universal flange allows the trap to be positioned in the correct position, regardless of pipeline configuration.

Built-in strainer.

OPTIONS: Blowdown valve.

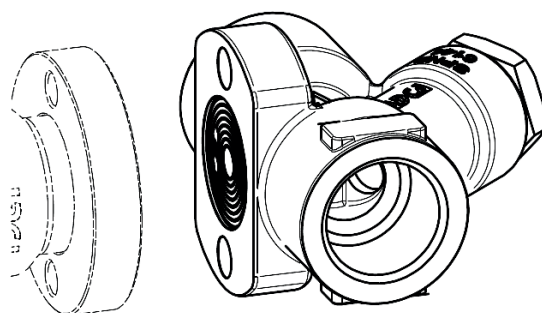
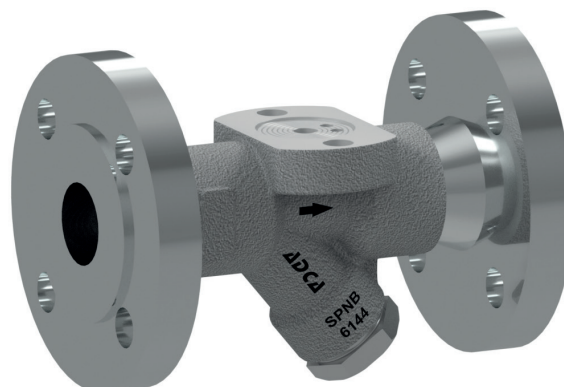
USE: Saturated and superheated steam.

AVAILABLE MODELS: UCX41 – stainless steel.

SIZES: 1/2" to 1"; DN 15 to DN 25.

CONNECTIONS: Female threaded ISO 7 Rp or NPT.  
 Flanged EN 1092-1 PN 40.  
 Flanged ASME B16.5 Class 150 or 300.  
 Socket weld (SW) ASME B16.11.  
 Butt weld (BW) ASME B16.25 on request.

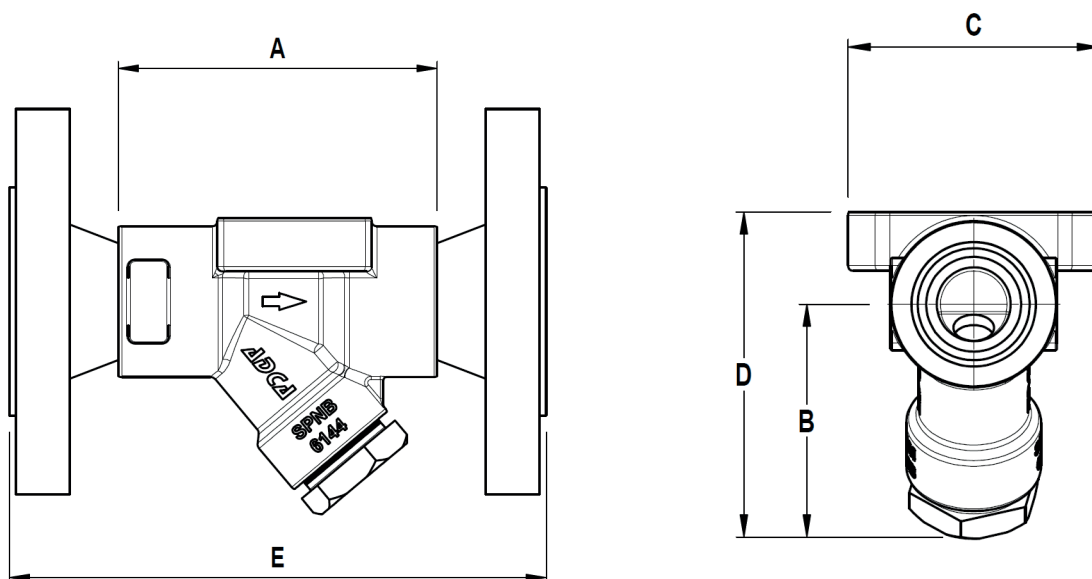
INSTALLATION: With the surface for swivel connection in a vertical plane (mechanical steam traps) or, alternatively, in an horizontal plane for thermostatic steam traps.  
 See IMI – Installation and maintenance instructions.



**BODY LIMITING CONDITIONS**

THREADED / SW	FLANGED PN 40 *	FLANGED CLASS 150 **	FLANGED CLASS 300 **	RELATED TEMPERATURE
ALLOWABLE PRESSURE	ALLOWABLE PRESSURE	ALLOWABLE PRESSURE	ALLOWABLE PRESSURE	
47,8 bar	40 bar	15,3 bar	39,9 bar	-10 / 50 °C
40,9 bar	37,9 bar	13,3 bar	34,4 bar	100 °C
34,4 bar	31,8 bar	11,1 bar	28,8 bar	200 °C
30,6 bar	27,6 bar	9,7 bar	25,2 bar	300 °C
28,6 bar	25,7 bar	6,5 bar	23,1 bar	400 °C

\* According to EN 1092-1:2018; \*\* According to EN 1759-1:2004.



**DIMENSIONS (mm)**

SIZE	THREADED / SW					PN 40		CLASS 150		CLASS 300	
	A	B	C	D	WEIGHT (kg)	E	WEIGHT (kg)	E	WEIGHT (kg)	E	WEIGHT (kg)
1/2" – DN 15	80	63	68	88	1	150	2,4	150	2	150	2,4
3/4" – DN 20	80	63	68	88	1	150	3	150	2,5	150	3,3
1" – DN 25	95	63	68	88	1,1	160	3,6	160	3,1	160	3,8

**MATERIALS**

POS. N°	DESCRIPTION	MATERIAL
1	Body	A351 CF8 / 1.4308
2	Strainer cap	AISI 304 / 1.4301
3	* Strainer screen	AISI 304 / 1.4301
4	* Gasket	AISI 304 / 1.4301

\* Available spare parts.

