

STEAM INJECTORS SI125 and SI140

DESCRIPTION

The ADCAMix SI125 and SI140 is a series of direct steam injectors designed for rapid heating of still or flowing mediums, inside basins and vessels. Steam enters through the inlet connection, passes along the center of the device and mixes with the cool medium, which is drawn in through radial holes.

MAIN FEATURES

Corrosion-resistant stainless steel construction.
No moving parts.

OPTIONS: Complete system including vacuum breaker and self acting temperature regulator.
Different capacities and designs available under request.

USE: Heating via direct steam injection.

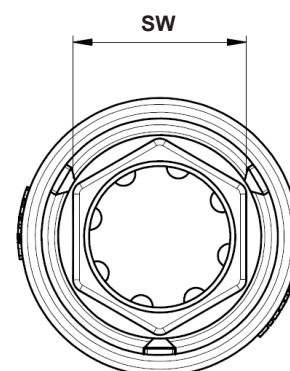
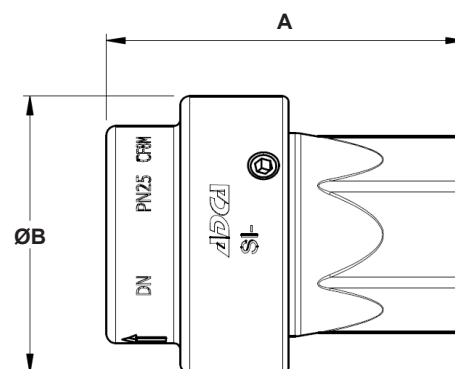
AVAILABLE MODELS: SI125 and SI140.

SIZES: 1" and 1 1/2".

CONNECTIONS: Female threaded ISO 7 Rp.

INSTALLATION: Horizontal installation.
See IMI – Installation and maintenance instructions.

MATERIAL: CF8M / 1.4408.



LIMITING CONDITIONS

Body design conditions	PN 25
Maximum operating pressure	17 bar
Maximum operating temperature	95 °C

DIMENSIONS (mm)

SIZE	A	ØB	SW	WGT. (kg)
1"	88	73	40	0,97
1 1/2"	114	88	55	1,8

FLOW RATE CAPACITY (kg/h)

MODEL	SIZE	INLET STEAM PRESSURE (bar)																
		1	2	3	4	5	6	7	8	9	10	11	12	13	14	15	16	17
SI125	1"	130	170	270	352	415	500	575	660	695	795	880	940	980	1040	1090	1150	1220
SI140	1 1/2"	395	570	800	970	1120	1290	1440	1625	1810	1940	2240	2360	2590	2700	2800	3050	3200

HOW TO SIZE

Example

Application requires injection of 3500 kg/h of saturated steam, which is readily available at a pressure of 8 bar. From the capacity table, a ADCAMix SI140 injector will process 1625 kg/h at 8 bar, and 3500 divided by 1625 equals 2,15. Two injectors will barely cope, so it is recommended to install three ADCAMix SI140 injectors, to safely meet the demand.