

## PIPELINE Y STRAINERS IS116

### DESCRIPTION

The IS116 forged steel Y strainers are applicable to all types of steam, water, oil and air systems. Their purpose is to protect traps, regulating valves, piping, etc. from dirt and impurities, which are often the cause of damage and consequent energy loss of fluid systems.

### MAIN FEATURES

Strainer cap with drain plug.

**OPTIONS:** Various screen aperture sizes.  
Blowdown valves.

**USE:** Saturated steam, water, oil, air and other fluids compatible with the construction materials.

**AVAILABLE MODELS:** IS116 – forged steel.

**SIZES:** 1/2" to 2"; DN 15 to DN 50.

**SCREENS:** 0,8 mm aperture.  
Others on request.

**CONNECTIONS:** Female threaded ISO 7 Rp or NPT.  
Flanged EN 1092-1 PN 40, PN 63 or PN 100.  
Flanged ASME B16.5 Class 150, 300 or 600.  
Socket weld (SW) ASME 16.11.

**INSTALLATION:** Horizontal or vertical downstream installation.  
See IMI – Installation and maintenance instructions.



CE MARKING – GROUP 2 (PED – European Directive)		
CLASS 150	PN 40 – PN 100 CLASS 300 – CLASS 800	Category
1/2" to 2"	1/2" to 1 1/4" – DN 15 to 32	SEP
-	1 1/2" to 2" – DN 40 to 50	1 (CE marked)

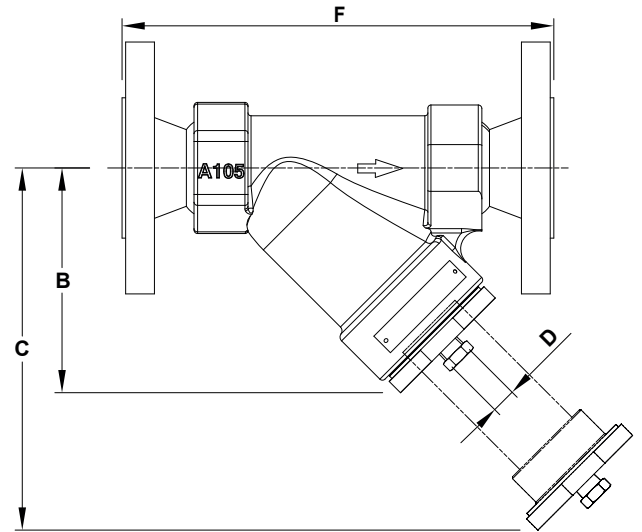
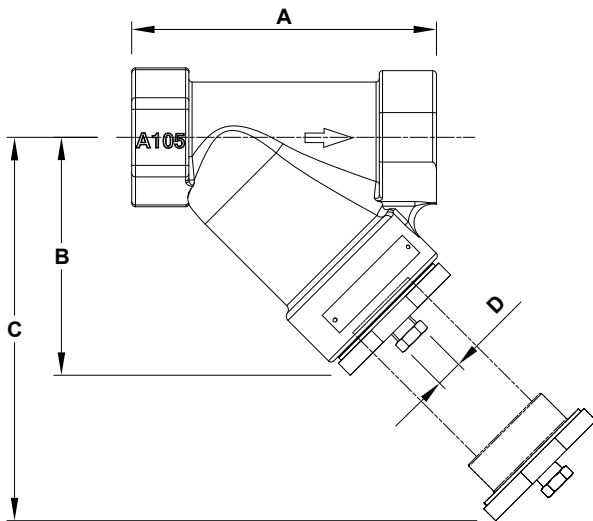
BODY LIMITING CONDITIONS							
FLANGED PN 40 *	FLANGED PN 63 *	FLANGED PN 100 *	FLANGED CLASS 150 **	FLANGED CLASS 300 **	FLANGE CLASS 600 **	THREADED / SW CLASS 800 ***	RELATED TEMP.
ALLOWABLE PRESSURE	ALLOWABLE PRESSURE	ALLOWABLE PRESSURE	ALLOWABLE PRESSURE	ALLOWABLE PRESSURE	ALLOWABLE PRESSURE	ALLOWABLE PRESSURE	
40 bar (- 10 / 50 °C)	63 bar (- 10 / 50 °C)	100 bar (- 10 / 50 °C)	19,7 bar	51 bar	102 bar	136,2 bar	-29 / 38 °C
40 bar	63 bar	100 bar	19,3 bar	50 bar	100,1 bar	133,7 bar	50 °C
27,6 bar	43,5 bar	69 bar	10,2 bar	38,9 bar	77,5 bar	106,2 bar	300 °C
25,7 bar	40,5 bar	64,2 bar	8,4 bar	36,9 bar	74 bar	100,2 bar	350 °C
18,5 bar	46,2 bar	29,1 bar	5,6 bar	28,7 bar	57,7 bar	76,7 bar	425 °C

PMO – Maximum operating pressure: 136 bar.

TMO – Maximum operating temperature: 425 °C.

\* According to EN 1092-1; \*\* According to EN 1759-1; \*\*\* According to API 602.

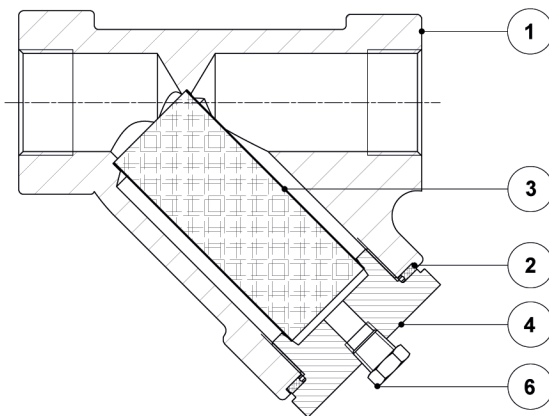
Body limiting conditions Class 800 or below, depending on the type of connection adopted.



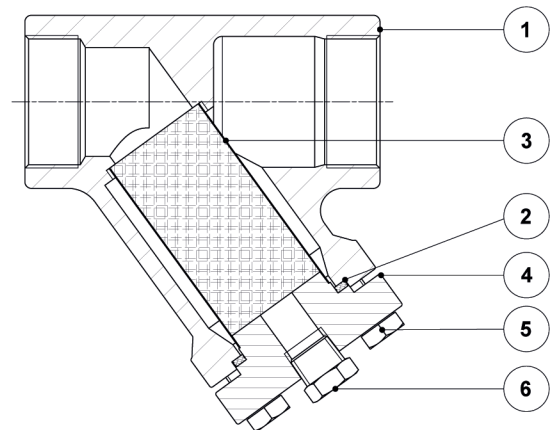
**DIMENSIONS (mm)**

SIZE	THREADED / SW					PN 40		PN 63 / PN 100 *	CLASS 150 *	CLASS 300 *	CLASS 600 *
	A	B	C	D **	WEIGHT (kg)	F	WEIGHT (kg)	F	F	F	F
1/2" – DN 15	90	60	105	1/4"	1	150	2,6	165	165	165	165
3/4" – DN 20	110	75	140	1/4"	1,2	170	3,5	185	191	191	191
1" – DN 25	130	93	155	1/4"	2	200	4,6	230	216	216	216
1 1/4" – DN 32	160	120	195	1/4"	4,5	240	8,3	270	260	270	280
1 1/2" – DN 40	160	120	195	1/4"	4,5	240	9,5	270	260	270	280
2" – DN 50	160	145	280	1/2"	6	245	12	276	276	292	292

\* For weights, consult manufacturer. \*\* This connection is threaded NPT.



1/2" to 1 1/2" – DN 15 to DN 40



2" – DN 50

**MATERIALS**

POS. N°	DESIGNATION	MATERIAL
1	Body	A105 / 1.0432
2	* Gasket	Graphite
3	* Strainer screen	AISI 304 / 1.4301
4	Cap	A105 / 1.0432
5	Bolts	Steel 8.8
6	Plug	A105 / 1.0432

\* Available spare parts.