

TWO-WAY ASEPTIC CONTROL VALVES V926A

DESCRIPTION

The ADCAPure V926A is a series of single seated two-way aseptic control valves with angle connections.

These valves are designed to regulate and accurately control flow of liquids and gases and are suitable for high purity applications found in the pharmaceutical, cosmetic, fine chemical and food & beverage industries.

The V926A can be assembled with pneumatic, hydraulic or electric actuators, for modulating and shut-off control tasks.

MAIN FEATURES

- Completely manufactured from bar stock material.
- Body and bonnet are connected by a clamp connection, allowing fast and easy maintenance procedures.
- High-performance EPDM diaphragm stem sealing.
- Cavity-free with no air trap locations.
- Metal to metal or soft sealing.
- Self-drainable design.

STANDARD SURFACE FINISH

- Internal wetted parts: $\leq 0,51 \mu\text{m Ra} - \text{SF1}$.
- External: $\leq 0,76 \mu\text{m Ra} - \text{SF3}$.
- Other surface conditions see TIS.GIA – General information ADCAPure.
- Ultrasonic cleaning.

- OPTIONS:
- Soft valve sealing.
 - Reduced bore trims.
 - Heating chamber.
 - Inline connections.

- USE:
- Saturated steam, hot and superheated water.
 - Process fluids, liquids, air and gases compatible with the construction.

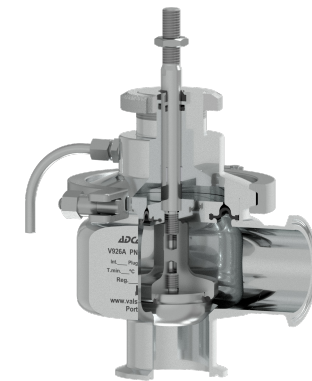
- AVAILABLE MODELS:
- V926A.

- SIZES:
- 1/2" to 2".

- CONNECTIONS:
- ASME BPE clamp ferrules or tube weld (ETO) ends. Others on request.

- PACKAGING:
- Assembling and packaging in a clean room certified according to ISO 14644-1.
 - The product is end capped and sealed with recyclable thermo-shrinkable plastic film, to avoid contamination.

- INSTALLATION:
- Horizontal installation. Vertical inlet and horizontal outlet. See IMI – Installation and maintenance instructions.





CE MARKING – GROUP 2 (PED – European Directive)	
PN 16	Category
1/2" to 2"	SEP

LIMITING CONDITIONS *	
Maximum allowable pressure	16 bar @ 20 °C
Maximum operating pressure	10 bar
Maximum operating pressure (steam)	6 bar
Maximum operating temperature	150 °C
Maximum operating temperature (steam and water) **	170 °C
Minimum operating temperature	-10 °C

* Other limits on request. Maximum operating conditions may be limited by the valve end connections due to normative restrictions.

** With EPDM seals.

PLUG DESIGN

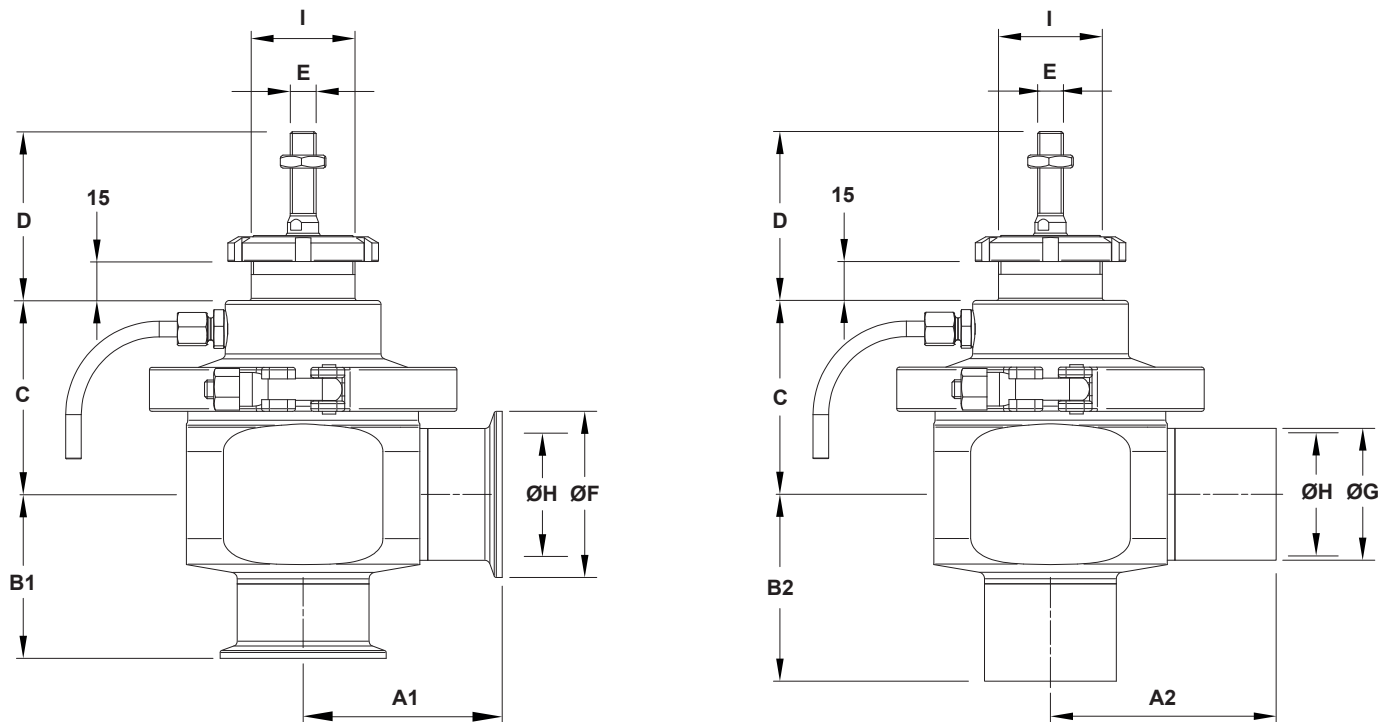
PARABOLIC		PARABOLIC (SOFT SEALING)	
	<p>Sealing: Metal to metal</p> <p>Characteristic: Equal percentage (EQP), linear (PL) or quick-opening (On/Off)</p> <p>Flow direction: From below</p> <p>Rangeability: 50:1 (EQP), 30:1 (PL) or 10:1 (On/Off)</p> <p>Leakage: Class IV, acc. to IEC 60534-4</p>		<p>Sealing: EPDM</p> <p>Characteristic: Equal percentage (EQP) or linear (PL)</p> <p>Flow direction: From below</p> <p>Rangeability: 50:1 (EQP) or 30:1 (PL)</p> <p>Leakage: Class VI, acc. to IEC 60534-4</p>

FLOW RATE COEFFICIENTS – PARABOLIC PL, EQP AND ON/OFF PLUGS

SIZE	Kvs (m ³ /h)													
	0,1 *	0,25 *	0,5 *	1	1,5	2	2,3	2,9	4	6,3	10	16	25	40
1/2"	•	•	•	•	•	•								
3/4"							•	•	•					
1"							•	•	•	•				
1 1/2"									•	•	•	•		
2"											•	•	•	•
SEAT Ø (mm)	4			8			12		15	19.2	25	32	38	47
STROKE (mm)	7,5										15			

* Microflow is only available with linear characteristic and metal to metal sealing.
For conversion Kvs = Cv (US) x 0,865.

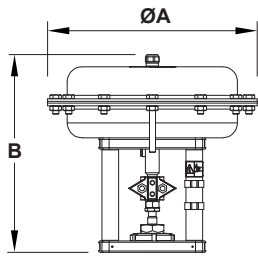
DIMENSIONS



DIMENSIONS (mm)					
DIMENSION	SIZE				
	1/2"	3/4"	1"	1 1/2"	2"
A1	61	61	61	77	77
A2	66	66	66	85	87
B1	41	46	49	62	63
B2	41	46	49	70	72
C	54	56	58	68	75
D	65 / 77 *				
E	M10 / M10 x 1 *				
ØF	25	25	50,4	50,4	63,9
ØG	12,7	19,1	25,4	38,1	50,8
ØH	9,4	15,8	22,1	34,8	47,5
I	M40 x 1,5				
WEIGHT (kg)	2	2,1	2,3	3,8	4,3

* When ordering without actuator specify the preferred dimension, if any.

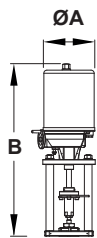
Remarks: Face to face dimensions are not standardized. Different dimensions available on request.



DIMENSIONS – PA SERIES PNEUMATIC ACTUATORS (mm)				
DIMENSION	PA10	PA206	PA25	PA281
ØA	170	209	250	275
B	251	236	260	243
WEIGHT (kg)	6,3	6,2	10,1	9,6

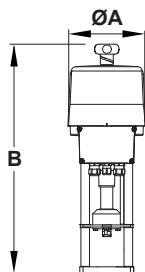
* For actuators with spring ranges 1 - 2 bar; 1,5 - 3 bar and 2 - 4 bar.

For more information, please consult IS PA.100 and IS PA.140 – PA Linear pneumatic actuators.



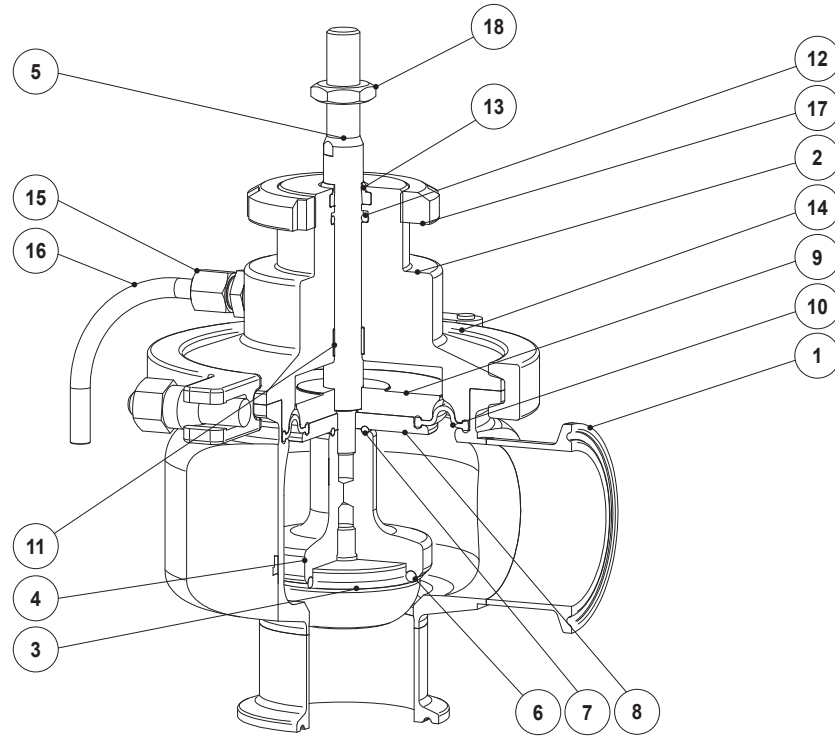
DIMENSIONS – EL SERIES ELECTRIC ACTUATORS (mm)		
DIMENSION	EL20	EL45
ØA	148	148
B	485	485
WEIGHT (kg)	8	8

For more information, please consult IS EL.012 – EL Linear electric actuators.



DIMENSIONS – ELS SERIES ELECTRIC ACTUATORS (mm)		
DIMENSION	ELS20	ELS45
ØA	180	180
B	518	518
WEIGHT (kg)	4,5	4,5

For more information, please consult IS ELS.020 – ELS Intelligent linear electric actuators.



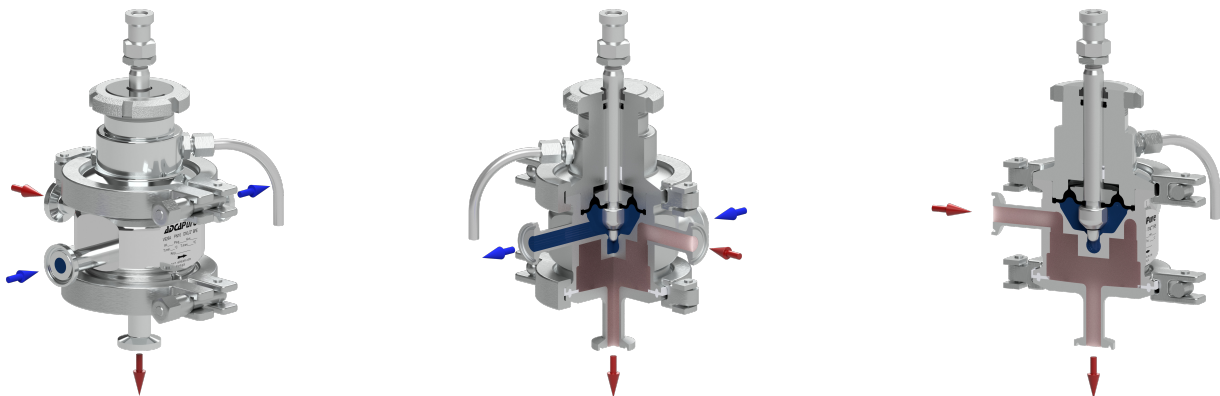
MATERIALS

POS. N°	DESIGNATION	MATERIAL	POS. N°	DESIGNATION	MATERIAL
1	Valve body	AISI 316L / 1.4404	10	* Diaphragm	EPDM
2	Bonnet	AISI 316L / 1.4404	11	* Guide bushing	PTFE
3	* Valve plug	AISI 316L / 1.4404	12	* O-ring	EPDM
4	* Plug disc	AISI 316L / 1.4404	13	* Scraper ring	FPM; NBR
5	* Stem	AISI 316L / 1.4404	14	Clamp	AISI 316 / 1.4401
6	* Valve plug seal	** EPDM	15	Compression fitting	AISI 304 / 1.4301
7	* O-ring	** EPDM	16	Discharge pipe	AISI 316 / 1.4401
8	Lower diaphragm plate	*** AISI 316L / 1.4404	17	Lock nut	CF8 / 1.4308
9	Upper diaphragm plate	AISI 316L / 1.4404	18	Lock nut	Stainless steel A2-70

* Available spare parts; ** Others on request.

Remarks: FDA / USP Class VI seals certificate on request.

All valves have a serial number. In case of non-standard valves, this number must be supplied if spare parts are ordered.



*Optional heating chamber
(to maintain the required temperature of the fluid flowing through the valve)*

ORDERING CODES V926A a)															
Valve model	V9A	1	S	U	E	M	E	FD	X	XD	015				
V926A - AISI 316L / 1.4404 aseptic control valve, two-way, angle body	V9A														
Valve series															
Series 1		1													
Bonnet design															
Standard			S												
With heating chamber			H												
Flow direction															
Flow under the plug				U											
Stem and body sealing															
EPDM				E											
Valve sealing															
Metal to metal (class IV)							M								
Soft sealed with EPDM (class VI)							E								
Characteristic															
Equal percentage (EQP)								E							
Linear (PL)								L							
Quick-opening (On/Off) (only available with metal to metal sealing)								Q							
Flow rate coefficient															
Kvs 4									FD						
See table below for other Kvs value codes															
Surface finish b)															
Standard surface finish										X					
Mirror mechanical polished external surfaces (SF1)										P					
Electropolished internal wetted parts (SF5)										E					
Pipe connection															
Clamp ferrule ASME BPE											DX				
Tube weld (ETO) according to ASME BPE											DI				
Size															
1/2"												015			
3/4"												020			
...															
Special construction / Additional options															
Full description or additional codes have to be added in case of a non-standard combination												E			

a) Codification for valve only. For actuator codes, refer to the appropriate information sheet.

b) Consult TIS.GIA – General information ADCAPure – for further details and other surface finish options.

FLOW RATE COEFFICIENT CODES														
Kvs	0,1	0,25	0,5	1	1,5	2	2,3	2,9	4	6,3	10	16	25	40
Code	M4	M2	M1	R4	R3	R2	R1	R0	FD	FE	FF	FG	FH	FI