

CLEAN STEAM INJECTORS SSI115

DESCRIPTION

The ADCAPure SSI115 is a direct steam injector completely manufactured from 316L stainless steel. It is designed for rapid heating of still or flowing media, inside tanks and mixers and is particularly suitable for application in the food and beverage industry. Steam enters through the inlet connection, passes along the center of the device and mixes with the cool medium, which is drawn in through radial holes.



MAIN FEATURES

Quiet operation.
Completely machined from 316L stainless steel.

STANDARD SURFACE FINISH

All surfaces: $\leq 0,51 \mu\text{m Ra} - \text{SF1}$.
Other surface conditions see TIS.GIA – General information ADCAPure.
Ultrasonic cleaning.

USE: Heating via direct injection of culinary or clean steam.

AVAILABLE MODELS: SSI115.

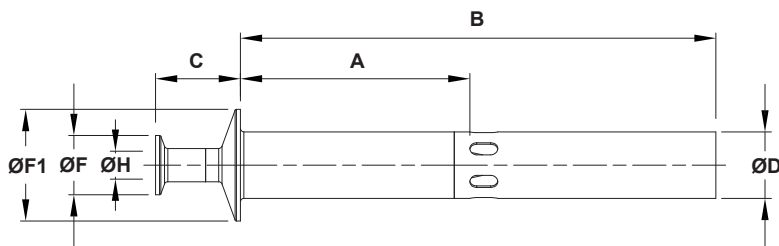
SIZES: DN 15 x 50.

CONNECTIONS: DIN 32676-A clamp ferrules.
Others on request.

PACKAGING: Assembling and packaging in a clean room certified according to ISO 14644-1.
The product is end capped and sealed with recyclable thermo-shrinkable plastic film, to avoid contamination.

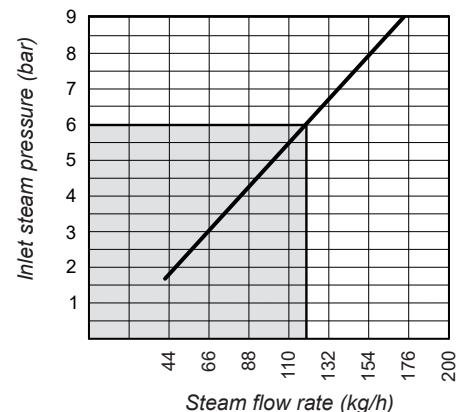
INSTALLATION: Horizontal installation is recommended.
See IMI – Installation and maintenance instructions.

MATERIAL: AISI 316L / 1.4404.



DIMENSIONS (mm)								
SIZE	A	B	C	ØD	ØF	ØF1	ØH	WGT. (kg)
DN 15 x 50	131	273	49	38,1	34	16	64	1,5

CAPACITY CHART



Remark: Selection under shadow area is recommended. Capacities shown are valid for vessels which are vented to atmosphere.

CE MARKING – GROUP 2 (PED – European Directive)	
PN 10	Category
DN 15 x 50	SEP

LIMITING CONDITIONS *	
Maximum operating steam pressure	9 bar @ 180 °C
Max. recommended steam pressure	6 bar
Minimum operating pressure	0,5 bar
Maximum operating temperature **	90 °C

* Other limits on request. Maximum operating conditions may be limited by the equipment end connections due to normative restrictions.

** With vessel vented to atmosphere.