

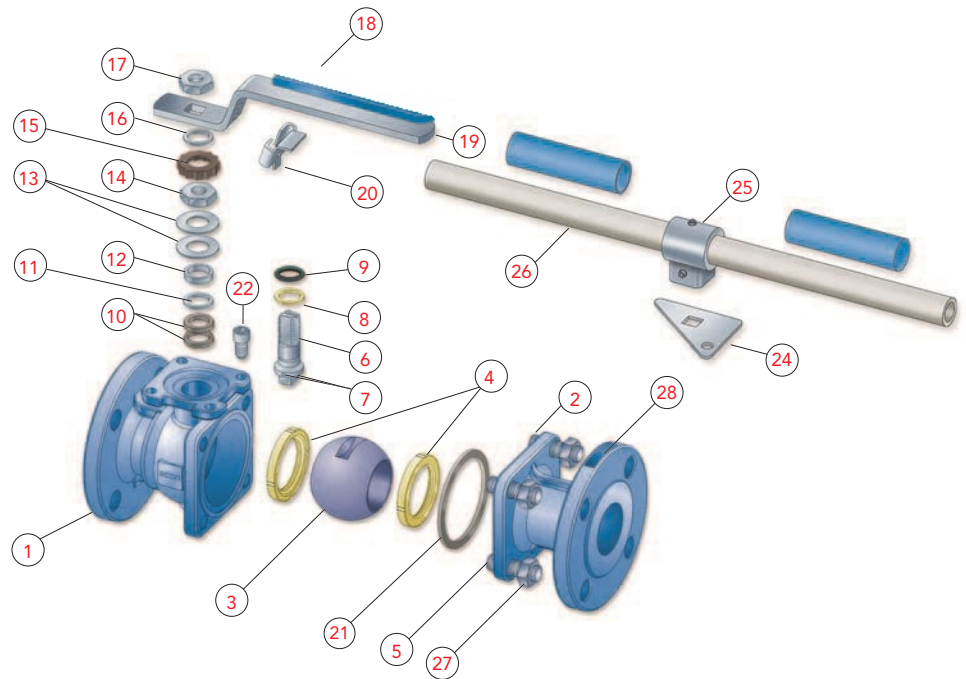
Steam Rated 2-Piece Ball Valves

Fig. 7249
Fig. 7289

DIN PN16/40
DN 15-200



2-pce full bore Ball Valves
Carbon steel (fig. 7249) and Stainless steel (fig. 7289)
Flange connections EN 1092-1
Pressure rating DIN PN16/40
DN 15-200
Design EN ISO 17292, EN 12516
Face to face length EN 558-1, 27 (short)
ISO 5211 Direct Mount
API 607 4th Edition Fire-Safe certified
TA-Luft (VDI 2440, Sec. 3.3.1.3) certified
Anti-static / ATEX 94/9/EC (Ex II 2 G-D EX-c II)



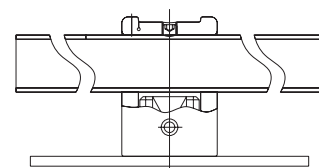
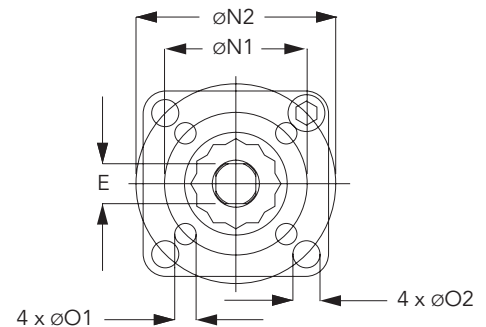
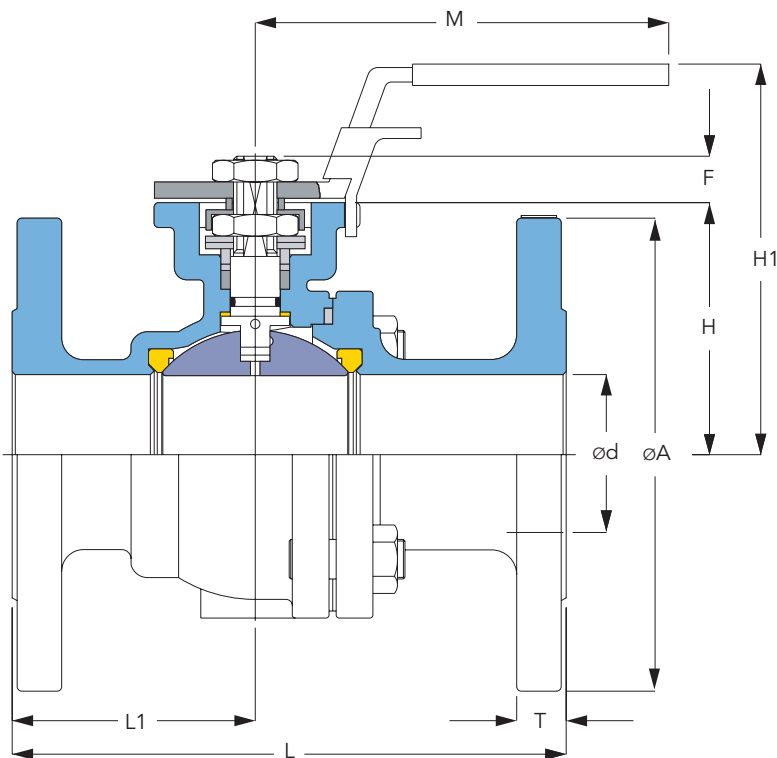
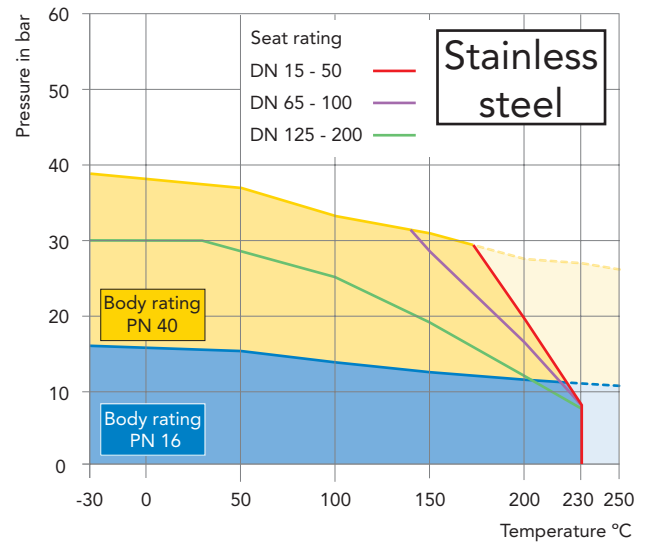
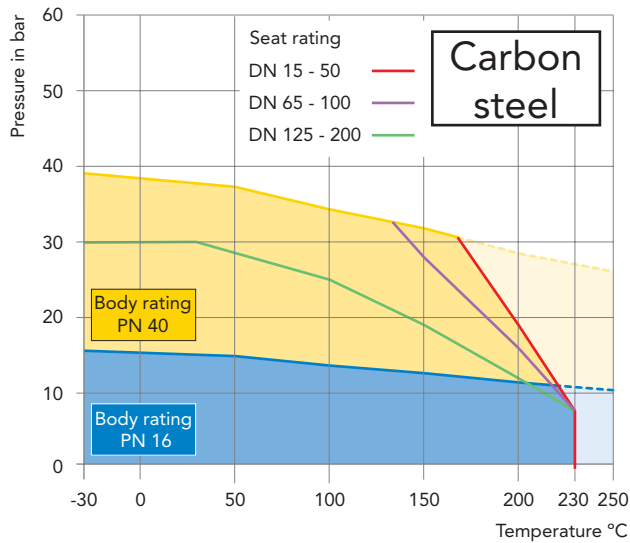
Remarks:
- DN 15 - 80 with handlever
- DN 100 - 150 with T-bar
- Standard spare part kit consists of pos. Nr.: 4, 8, 9, 10, 11 and 21
- DN 200 is without operator. On request a gearbox can be supplied

POS	NAME	MATERIAL (Carbon steel)	MATERIAL (Stainless steel)	POS	NAME	MATERIAL (Carbon steel)	MATERIAL (Stainless steel)
1	Body	1.0619	1.4408	15	Lock plate	1.4301	1.4301
2	Body end	1.0619	1.4408	16	Ring	1.4301	1.4301
3	Ball	1.4308 ⁴⁾	1.4408	17	Nut	1.4301 (A194-8)	1.4301 (A194-8)
4	Seat ring	PTFE (TFM1600)	PTFE (TFM1600)	18	Sleeve	Plastic	Plastic
5	Stud	1.7225 (A193-B7)	1.4301 (A193-B8)	19	Handlever	1.4301	1.4301
6	Stem	1.4301 ⁴⁾	1.4401	20	Locking device	1.4301	1.4301
7	Anti-static device	1.4301	1.4401	21	Body gasket	1.4401 ²⁾	1.4401 ²⁾
8	Thrust washer	PTFE	PTFE	22	Cap screw	1.4301 (A193-B8)	1.4301 (A193-B8)
9	O-ring	VITON (FKM)	VITON (FKM)	23	Nut	1.4301 (A194-8)	1.4301 (A194-8)
10	Glandpacking	GRAFOIL	GRAFOIL	24	Stop plate	1.4301	1.4301
11	Bush	1.4301	1.4301	25	T-bar support	1.4308	1.4308
12	Gland	1.4401	1.4401	26	T-bar ¹⁾	St. A53 ³⁾	St. A53 ³⁾
13	Belleville washer	1.4310	1.4310	27	Nut	1.0503 (A194-2H)	1.4301 (A194-8)
14	Nut	1.4301 (A194-8)	1.4301 (A194-8)	28	Name plate	1.4301	1.4301

¹⁾ DN100 - 150 ²⁾ Spiralwound ³⁾ Zinc plated ⁴⁾ Upon request also available with 1.4408 ball and 1.4401 stem

Pressure/temperature rating

Please note; recommended maximum steam working pressure is 10 BAR Gauge



DN 100 - 150
with T-bar

DN	ød	øA		#E	F	H	H1	L	L1		M	øN1	øN2	øO1	øO2	T		m[kg] PN16	m[kg] PN40
		PN16	PN40						PN16	PN40									
15	15	95	95	9	9	48,0	79,0	115	49,5	49,5	145	36	42	6	6	16	16	-	2,4
20	20	105	105	9	9	53,0	84,0	120	54,0	54,0	145	36	42	6	6	18	18	-	3,2
25	25	115	115	11	11	58,5	90,5	125	56,0	56,0	175	42	50	6	7	18	18	-	4,2
32	32	140	140	11	11	71,0	103,0	130	57,4	57,4	175	42	50	6	7	18	18	-	5,5
40	38	150	150	14	14	76,0	111,0	140	58,0	58,0	194	50	70	7	9	18	18	-	6,9
50	50	165	165	14	14	85,0	120,0	150	63,0	63,0	194	50	70	7	9	20	20	-	9,5
65	63	185	185	17	17	101,5	150,0	170	69,0	64,0	265	70	102	9	11	18	22	13,8	13,8
80	76	200	200	17	17	111,5	160,0	180	74,5	69,5	265	70	102	9	11	20	24	17,7	17,8
100	100	220	235	22	22	140,0	182,0	190	83,0	78,0	400	-	102	-	11	20	24	25,2	30,5
125	125	250	270	27	27	183,0	260,0	325	153,0	160,0	600	-	125	-	14	22	26	60,0	62,5
150	150	285	300	27	27	202,0	280,0	350	162,0	176,0	800	-	125	-	14	22	28	71,8	73,8
200	200	340	375	27	27	252,5	279,5	400	191,0	221,0	-	-	125	-	14	24	34	127,0	152,0