

Materials

Cartridge:

Weight: 0.25 kg. (0.55 lbs.)
 Steel with hardened work surfaces.
 Zinc-plated exposed surfaces.
 Buna N O-rings and polyester elastomer backups standard.
 Optional polyurethane seals with fluorocarbon back-up recommended for pressures over 240 bar (3500 psi).

Standard Ported Body:

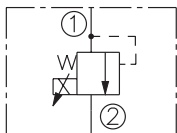
Weight: 0.16 kg. (0.35 lbs.)
 Anodized high-strength 6061 T6 aluminum alloy, rated to 207 bar (3000 psi).
 Ductile iron bodies available; dimensions may differ.

Standard Coil:

Weight: 0.32 kg. (0.7 lbs.)
 Unitized, thermoplastic encapsulated.

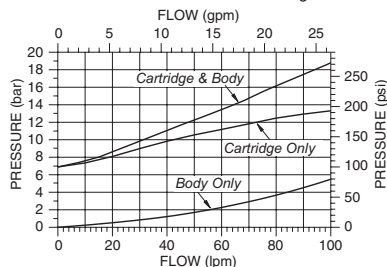
Symbols

USASI/ISO:

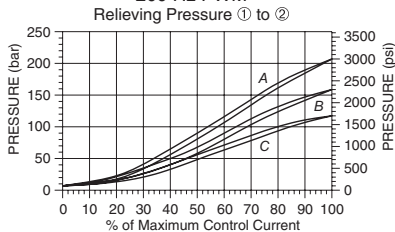


Performance

Pressure Drop vs. Flow Characteristic
 For Flow ① to ② with Coil De-energized

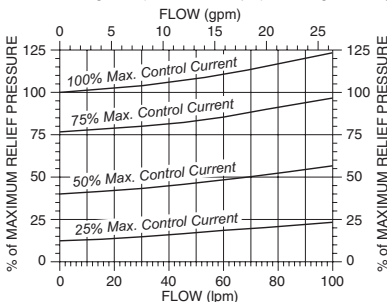


Relief Pressure vs. Current (DC) Characteristic
 200 Hz PWM
 Relieving Pressure ① to ②



Typical Relief Pressure vs. Flow Characteristic

Typical Relieving Pressure ① to ② at Various %'s of Maximum Control Current
 Pressure Range "A" (207 bar/3000 psi); Cartridge in Body



TS10-26

Proportional Electric Relief with Internally Piloted Spool 207 BAR Rated

A screw-in, cartridge-style, pilot-operated, spool-type hydraulic relief valve, which can be infinitely adjusted across a prescribed range using a variable electric input. Pressure output is proportional to DC current input. This valve is intended for use as a pressure limiting device in demanding applications.

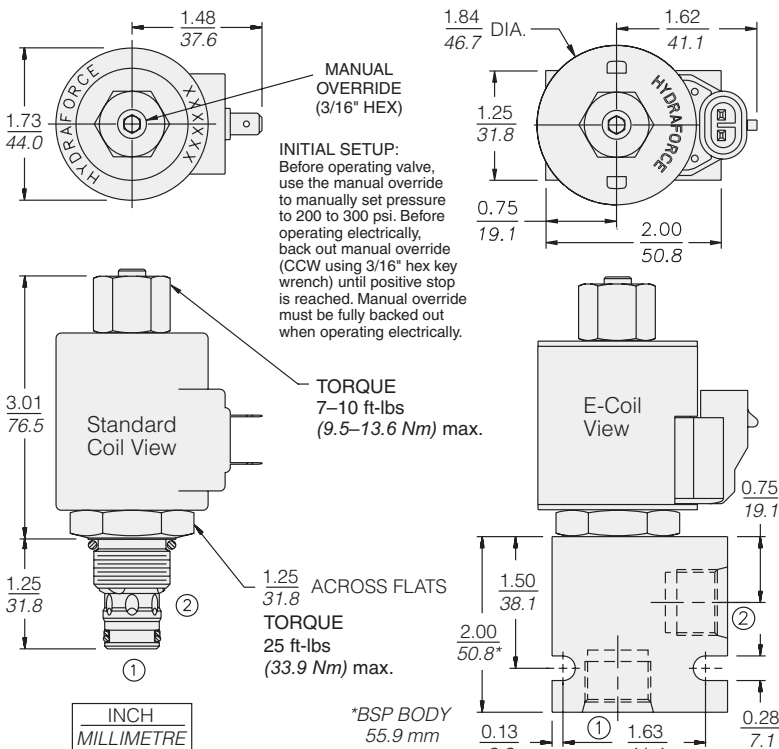
Voltage	Hydraforce code	Article no.	Price £	Price €
CARTRIDGE VERSION				
CARTRIDGE VERSION - TYPE A 207 BAR (3,000 PSI)				
24V DC	TS10-26A-0-N-24DG	TS1026AC24	£270.80	€325.00
CARTRIDGE VERSION - TYPE B 159 BAR (2,300 PSI)				
24V DC	TS10-26B-0-N-24DG	TS1026BC24	£270.80	€325.00
CARTRIDGE VERSION - TYPE C 117 BAR (1,700 PSI)				
24V DC	TS10-26C-0-N-24DG	TS1026CC24	£270.80	€325.00
INLINE WITH BODY 3/8" BSP				
TYPE A 207 BAR (3,000 PSI)				
24V DC	TS10-26A-3B-N-24DG	TS1026A3B24	£343.40	€412.10
TYPE B 159 BAR (2,300 PSI)				
24V DC	TS10-26B-3B-N-24DG	TS1026B3B24	£343.40	€412.10
TYPE C 117 BAR (1,700 PSI)				
24V DC	TS10-26C-3B-N-24DG	TS1026C3B24	£343.40	€412.10
INLINE WITH BODY 1/2" BSP				
TYPE A 207 BAR (3,000 PSI)				
24V DC	TS10-26A-4B-N-24DG	TS1026A4B24	£332.10	€398.50
TYPE B 159 BAR (2,300 PSI)				
24V DC	TS10-26B-4B-N-24DG	TS1026B4B24	£332.10	€398.50
TYPE C 117 BAR (1,700 PSI)				
24V DC	TS10-26C-4B-N-24DG	TS1026C4B24	£332.10	€398.50

with nitril seals

WITH 'G' DIN CONNECTOR PLUG

On request - Viton Seals - Screen filter protection - Manual Override
 On request - For DC coils with spade or push on connections

Dimensions



Please contact our technical sales team for electronic controller options