



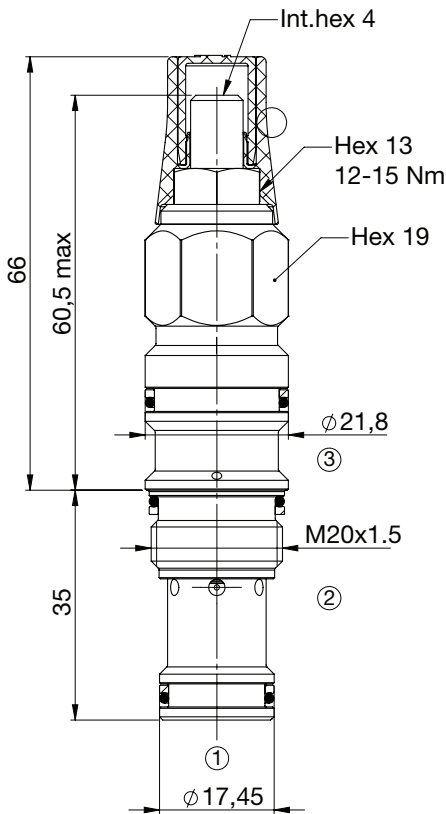
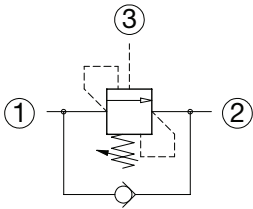
T11A 3:1 COUNTERBALANCE VALVES

Adjustable Setting

- Turn adjustment clockwise to increase setting
- Backpressure at port 2 adds to the effective relief setting at a ratio of 1 plus the pilot ratio times the backpressure
- Set your counterbalance valve at least 1.3 times the maximum load induced pressure
- This valve is not provided with positive seals on the pilot section
- Indicated Reseat value is obtained with valve set @ maximum setting

Technical Details

Cavity	T11A
Capacity	30 lpm (8 gpm)
Max operating pressure	350 bar
Pilot ratio	3:1
Maximum setting	280 bar (4000 psi)
Minimum setting	70 bar (1000 psi)
Pressure increase per turn	155 bar (2250 psi)
Pressure setting established @	cracking pressure (1in3/min)
Maximum valve leakage at reseal	5 drops / minute
Operating characteristic	standard
Reseat	>85%
Maximum recommended load pressure at maximum setting	230 bar (3350 psi)
Valve hex size	19
Valve installation torque	40-45 Nm (30-35 lbf ft)
Adjustment screw internal hex size	4
Seal-lock hex size	13
Seal-lock torque	12-15 Nm (9-11 lbf ft)
Valve weight	0.150 Kg (0.33 lbs)
External component surface treatment	zinc plating + sealing
Seal kit (nbr)	S00T11ASN900000
Seal kit (viton)	S00T11ASV900000
Temp range	-30 to 100°C (-22 to 212°F) with BunaN seals;
Fluids	Mineral-based or synthetics with lubricating properties at viscosities of 10 to 500 mm ² /s (cSt)
Filtration	Nominal value max. 10µm (NAS 8) / ISO 4406 19/17/14



Performance Curves

