

# SV16-20

2 Way, Normally closed, 207 BAR Rated

A solenoid-operated, 2-way, normally closed, poppet-type, screw-in hydraulic cartridge valve, designed to function as a load holding or blocking valve in applications requiring low internal leakage.

## Materials

### Cartridge:

Weight: 0.31 kg. (0.69 lbs.);  
Steel with hardened work surfaces.  
Zinc-plated exposed surfaces.  
Buna N O-rings and polyester elastomer back-up standard.

### Standard Ported Body:

Weight: 0.57 kg. (1.25 lbs.);  
Anodized high-strength 6061 T6 aluminum alloy, rated to 207 bar (3000 psi).  
Ductile iron bodies available; dimensions may differ.

### Standard Coil:

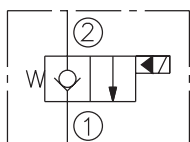
Weight: 0.27 kg. (0.60 lbs.)  
Unitized thermoplastic encapsulated.

Voltage	Hydraforce code	Article no.	Price £	Price €
<b>CARTRIDGE VERSION</b>				
24V DC	SV16-20-0-N-24DG	SV1620C24	£196.00	€235.20
110V AC	SV16-20-0-N-115AG	SV1620C115	£220.50	€264.60
220V AC	SV16-20-0-N-230AG	SV1620C230	£220.50	€264.60
<b>INLINE WITH BODY 3/4" BSP</b>				
24V DC	SV16-20-6B-N-24DG	SV16206B24	£332.10	€398.50
110V AC	SV16-20-6B-N-115AG	SV16206B110	£356.60	€427.90
220V AC	SV16-20-6B-N-230AG	SV16206B230	£356.60	€427.90
<b>INLINE WITH BODY 1" BSP</b>				
24V DC	SV16-20-8B-N-24DG	SV16208B24	£297.50	€357.00
110V AC	SV16-20-8B-N-115AG	SV16208B115	£322.00	€386.40
220V AC	SV16-20-8B-N-230AG	SV16208B230	£322.00	€386.40
<b>with nitril seals</b>				
<b>WITH 'G' DIN CONNECTOR PLUG</b>				

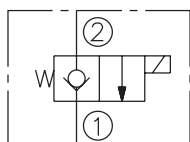
On request - Viton Seals - Screen filter protection - Manual Override  
On request - For DC coils with spade or push on connections

## Symbols

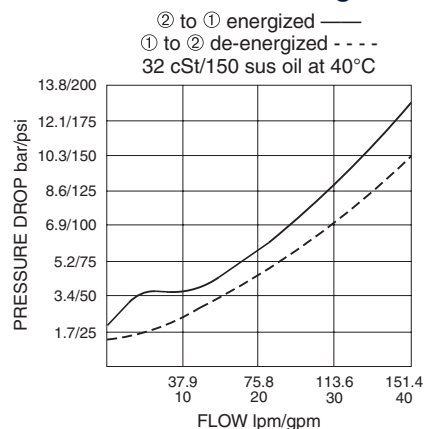
### USASI:



### ISO:



## Performance (Cartridge Only)



## Dimensions

