

SV12-22

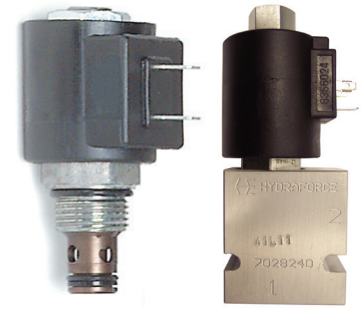
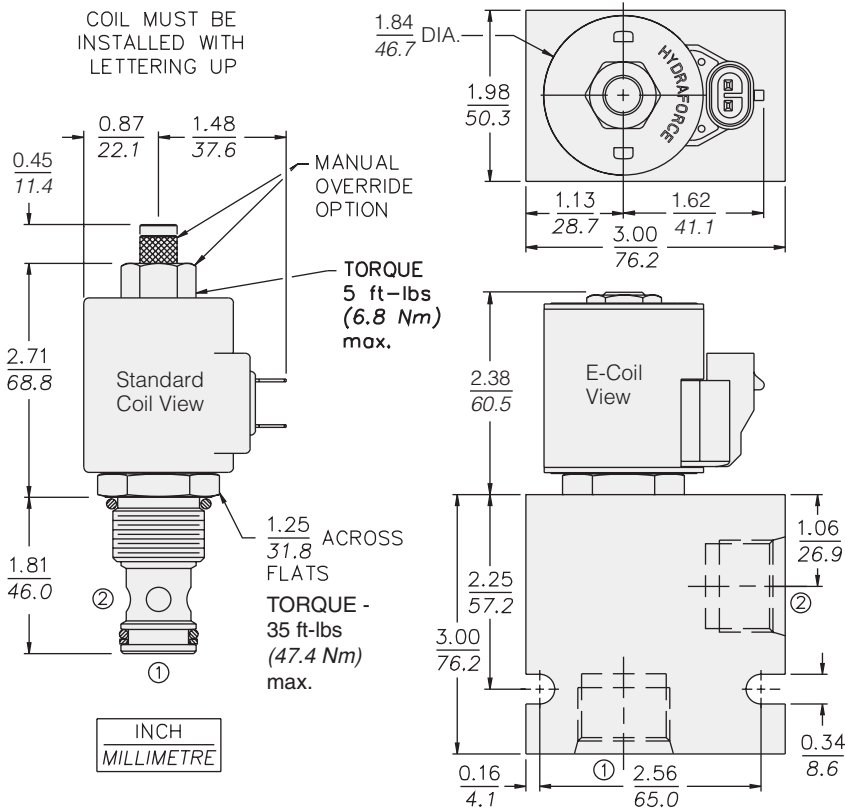
2 Way, Normally Closed, 207 BAR Rated

A solenoid-operated, 2-way, normally closed, poppet-type, screw-in hydraulic cartridge valve, designed to function as a load-holding or blocking valve in applications requiring low internal leakage.

Voltage	Hydraforce code	Article no.	Price £	Price €
CARTRIDGE VERSION				
24V DC	SV12-22-0-N-24DG	SV1222C24	£178.50	€214.20
110V AC	SV12-22-0-N-115AG	SV1222C115	£203.00	€243.60
220V AC	SV12-22-0-N-230AG	SV1222C230	£203.00	€243.60
INLINE WITH DUCTILE IRON BODY 3/4" BSP				
24V DC	SV12-22-6B-N-24DG	SV12226B24	£314.60	€377.50
110V AC	SV12-22-6B-N-115AG	SV12226B110	£339.10	€406.90
220V AC	SV12-22-6B-N-230AG	SV12226B230	£339.10	€406.90
INLINE WITH DUCTILE IRON BODY 1" BSP				
24V DC	SV12-22-8B-N-24DG	SV12228B24	£280.00	€336.00
110V AC	SV12-22-8B-N-115AG	SV12228B115	£304.50	€365.40
220V AC	SV12-22-8B-N-230AG	SV12228B230	£304.50	€365.40
with polyurethane seals				
WITH 'G' DIN CONNECTOR PLUG				

On request - Viton Seals - Screen filter protection - Manual Override
 On request - For DC coils with spade or push on connections

Dimensions



Materials

Cartridge:

Weight: 0.25 kg. (0.55 lbs.)
 Steel with hardened work surfaces.
 Zinc-plated exposed surfaces.
 Buna N O-rings and polyester elastomer back-up standard.

Standard Ported Body:

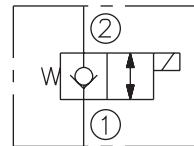
Weight: 0.57 kg. (1.25 lbs.)
 Anodized highstrength 6061 T6 aluminum alloy, rated to 207 bar (3000 psi).
 Ductile iron bodies available; dimensions may differ.

Standard Coil:

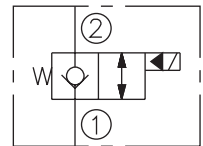
Weight: 0.27 kg. (0.60 lbs.)
 Unitized thermoplastic encapsulated.

Symbols

USASI:



ISO:



Performance (Cartridge Only)

