

SV10-47A

4 Way, 3 Position, Spool, Tandem Center, 207 BAR Rated

A solenoid-operated, 4-way, 3-position, direct-acting, spool-type, tandem center, screw-in hydraulic cartridge valve.

Materials

Cartridge:

Weight: 0.30 kg. (0.65 lbs.)
Steel with hardened work surfaces.
Zinc-plated exposed surfaces.
Buna N O-rings and back-ups standard.

Standard Ported Body:

Weight: 0.36 kg. (0.80 lbs.)
Anodized high-strength 6061 T6 aluminum alloy, rated to 207 bar (3000 psi).
Ductile iron bodies available; dimensions may differ.

Standard Coil:

Weight each: 0.27 kg. (0.60 lbs.)
Unitized thermoplastic encapsulated.

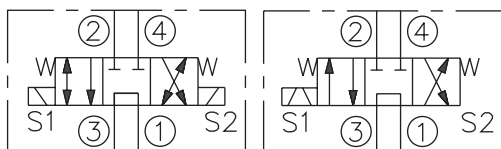
Voltage	Hydraforce code	Article no.	Price £	Price €
CARTRIDGE VERSION				
24V DC	SV10-47A-0-N-24DG	SV1047AC24	£260.80	€312.90
110V AC	SV10-47A-0-N-115AG	SV1047AC115	£309.80	€371.70
220V AC	SV10-47A-0-N-230AG	SV1047AC230	£309.80	€371.70
INLINE WITH BODY 1/4" BSP				
24V DC	SV10-47A-2B-N-24DG	SV1047A2B24	£350.90	€421.10
110V AC	SV10-47A-2B-N-115AG	SV1047A2B110	£399.90	€479.90
220V AC	SV10-47A-2B-N-230AG	SV1047A2B230	£399.90	€479.90
INLINE WITH BODY 3/8" BSP				
24V DC	SV10-47A-3B-N-24DG	SV1047A3B24	£344.80	€413.70
110V AC	SV10-47A-3B-N-115AG	SV1047A3B110	£393.80	€472.50
220V AC	SV10-47A-3B-N-230AG	SV1047A3B230	£393.80	€472.50
with nitril seals				
WITH 'G' DIN CONNECTOR PLUG				

On request - Viton Seals - Screen filter protection - Manual Override
On request - For DC coils with spade or push on connections

Symbols

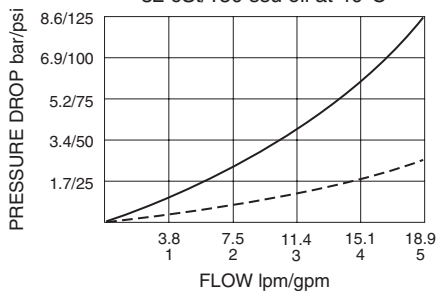
USASI:

ISO:

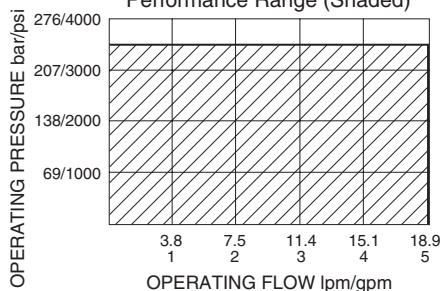


Performance (Cartridge Only)

③ to ②, ④ to ① Loop — ;
③ to ① Neutral - - -
32 cSt/150 ssu oil at 40°C



Performance Range (Shaded)



Dimensions

