

Materials

Cartridge:

Weight: 0.20 kg. (0.45 lbs.)
 Steel with hardened work surfaces.
 Zinc-plated exposed surfaces.
 Buna N O-rings and polyester elastomer back-up standard.

Standard Ported Body:

Weight: 0.36 kg. (0.80 lbs.)
 Anodized high-strength 6061 T6 aluminum alloy, rated to 207 bar (3000 psi).
 Ductile iron bodies available; dimensions may differ.

Standard Coil:

Weight: 0.27 kg. (0.60 lbs.)
 Unitized thermoplastic encapsulated.

SV10-40

4 Way, 2 Position, Spool, 207 BAR Rated

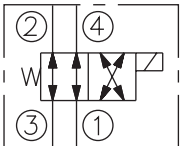
A solenoid-operated, four-way, two-position, direct-acting, spool-type, screw-in hydraulic cartridge valve.

Voltage	Hydraforce code	Article no.	Price £	Price €
CARTRIDGE VERSION				
24V DC	SV10-40-0-N-24DG	SV1040C24	£143.90	€172.70
110V AC	SV10-40-0-N-115AG	SV1040C115	£168.40	€202.10
220V AC	SV10-40-0-N-230AG	SV1040C230	£168.40	€202.10
INLINE WITH BODY 1/4" BSP				
24V DC	SV10-40-2B-N-24DG	SV10402B24	£234.10	€280.90
110V AC	SV10-40-2B-N-115AG	SV10402B110	£258.60	€310.30
220V AC	SV10-40-2B-N-230AG	SV10402B230	£258.60	€310.30
INLINE WITH BODY 3/8" BSP				
24V DC	SV10-40-3B-N-24DG	SV10403B24	£227.90	€273.50
110V AC	SV10-40-3B-N-115AG	SV10403B110	£252.40	€302.90
220V AC	SV10-40-3B-N-230AG	SV10403B230	£252.40	€302.90
with nitril seals				
WITH 'G' DIN CONNECTOR PLUG				

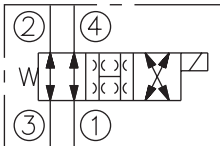
On request - Viton Seals - Screen filter protection - Manual Override
 On request - For DC coils with spade or push on connections

Symbols

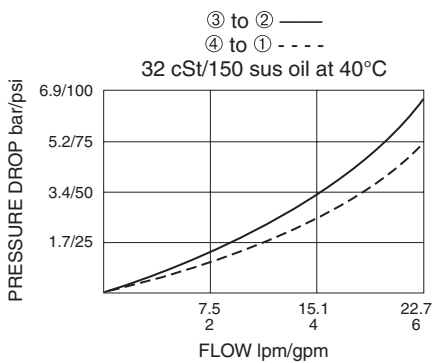
USASI/ISO:



TRANSITION:



Performance (Cartridge Only)



Dimensions

