

Materials

Cartridge:

Weight: 0.14 kg. (0.30 lbs.)
 Steel with hardened work surfaces.
 Zinc-plated exposed surfaces.
 Buna N O-rings and polyester elastomer back-up standard.

Standard Ported Body:

Weight: 0.36 kg. (0.80 lbs.)
 Anodized high-strength 6061 T6 aluminum alloy, rated to 207 bar (3000 psi).
 Ductile iron bodies available; dimensions may differ.

Standard Coil:

Weight: 0.27 kg. (0.60 lbs.)
 Unitized thermoplastic encapsulated.

SV10-31

3 Way, Spool, 207 BAR Rated

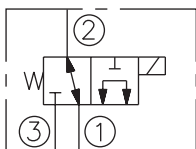
A solenoid-operated, three-way, direct-acting, spool-type, screw-in hydraulic cartridge valve.

Voltage	Hydraforce code	Article no.	Price £	Price €
CARTRIDGE VERSION				
24V DC	SV10-31-0-N-24DG	SV1031C24	£140.40	€168.50
110V AC	SV10-31-0-N-115AG	SV1031C115	£164.90	€197.90
220V AC	SV10-31-0-N-230AG	SV1031C230	£164.90	€197.90
INLINE WITH BODY 1/4" BSP				
24V DC	SV10-31-2B-N-24DG	SV10312B24	£229.30	€275.10
110V AC	SV10-31-2B-N-115AG	SV10312B110	£253.70	€304.50
220V AC	SV10-31-2B-N-230AG	SV10312B230	£253.70	€304.50
INLINE WITH BODY 3/8" BSP				
24V DC	SV10-31-3B-N-24DG	SV10313B24	£222.70	€267.20
110V AC	SV10-31-3B-N-115AG	SV10313B110	£247.20	€296.60
220V AC	SV10-31-3B-N-230AG	SV10313B230	£247.20	€296.60
with nitril seals				
WITH 'G' DIN CONNECTOR PLUG				

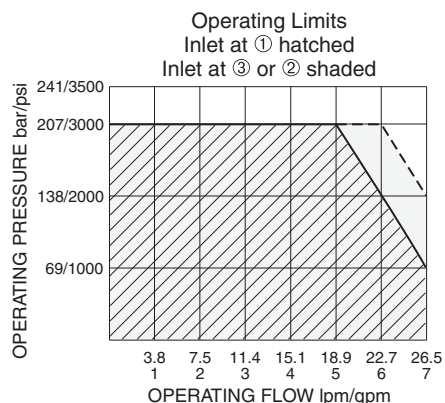
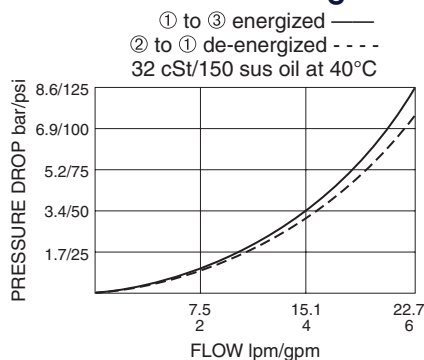
On request - Viton Seals - Screen filter protection - Manual Override
 On request - For DC coils with spade or push on connections

Symbols

USASI/ISO:



Performance (Cartridge Only)



Dimensions

