

SV08-30

3 Way, Spool, 207 BAR Rated

A solenoid-operated, 3-way, direct-acting, spool-type, screw-in hydraulic directional valve.

Materials

Cartridge:

Weight: 0.13 kg. (0.28 lbs.)
Steel with hardened work surfaces.
Zinc-plated exposed surfaces.
Buna N O-rings and back-ups standard.

Standard Ported Body:

Weight: 0.27 kg. (0.60 lbs.)
Anodized high-strength 6061 T6 aluminum alloy, rated to 207 bar (3000 psi).
Ductile iron bodies available; dimensions may differ.

Standard Coil:

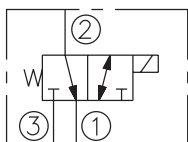
Weight: 0.11 kg. (0.25 lbs.)
Unitized thermoplastic encapsulated.

Voltage	Hydraforce code	Article no.	Price £	Price €
CARTRIDGE VERSION				
24V DC	SV08-30-0-N-24DG	SV0830C24	£118.10	€141.80
110V AC	SV08-30-0-N-115AG	SV0830C115	£143.10	€171.70
220V AC	SV08-30-0-N-230AG	SV0830C230	£150.50	€180.60
INLINE WITH BODY 1/4" BSP				
24V DC	SV08-30-2B-N-24DG	SV08302B24	£186.80	€224.20
110V AC	SV08-30-2B-N-115AG	SV08302B110	£211.80	€254.10
220V AC	SV08-30-2B-N-230AG	SV08302B230	£219.20	€263.00
INLINE WITH BODY 3/8" BSP				
24V DC	SV08-30-3B-N-24DG	SV08303B24	£186.80	€224.20
110V AC	SV08-30-3B-N-115AG	SV08303B110	£211.80	€254.10
220V AC	SV08-30-3B-N-230AG	SV08303B230	£219.20	€263.00
with nitril seals				
WITH 'G' DIN CONNECTOR PLUG				

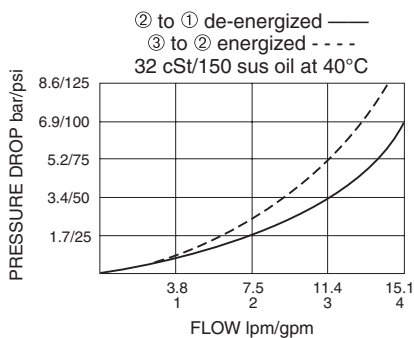
On request - Viton Seals - Screen filter protection - Manual Override
On request - For DC coils with spade or push on connections

Symbols

USASI/ISO:

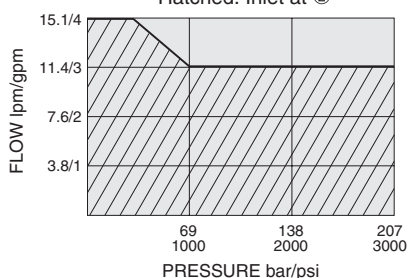


Performance (Cartridge Only)



PERFORMANCE RANGE

Shaded: Inlet at ③
Hatched: Inlet at ②



Dimensions

