

# 90° ROTARY COUPLING

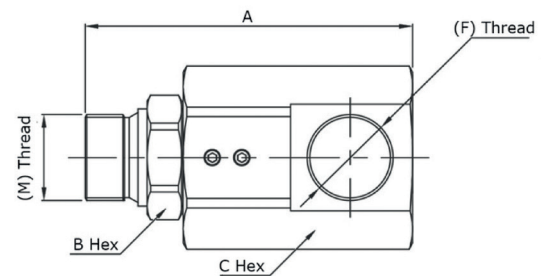
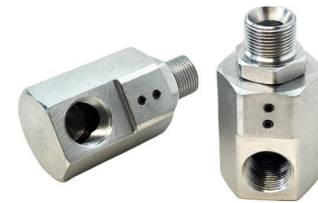
275 – 400 BAR Rated

## Specifications

Material:	Carbon Steel
Plating:	Trivalent CRIII
Sealing:	NBR Nitrile
Threads:	1/4" to 1" BSP
Operating Temp:	-40°C to 100°C

Article no.	Description	Price £	Price €
820500	90° rotary coupling 1/4" bsp	£12.30	€12.90
820501	90° rotary coupling 3/8" bsp	£18.90	€19.90
820502	90° rotary coupling 1/2" bsp	£25.50	€26.70
820503	90° rotary coupling 3/4" bsp	£32.40	€34.00
820504	90° rotary coupling 1" bsp	£47.30	€49.70

Body Size	Max. Working Pressure	Max. Flow Rate	A	B Hex	(M) Thread	(F) Thread	C Hex
06	400	24	72	19	1/4"	1/4"	30
10	400	46	79	24	3/8"	3/8"	34
12	350	82	90	27	1/2"	1/2"	36
19	300	121	100	34	3/4"	3/4"	46
25	275	154	123	41	1"	1"	59



# IN-LINE ROTARY COUPLING

275 – 400 BAR Rated

## Specifications

Material:	Carbon Steel
Plating:	Trivalent CRIII
Sealing:	NBR Nitrile
Threads:	1/4" to 1" BSP
Operating Temp:	-40°C to 100°C

Article no.	Description	Price £	Price €
820400	Straight rotary coupling 1/4" bsp	£10.90	€11.50
820401	Straight rotary coupling 3/8" bsp	£15.90	€16.70
820402	Straight rotary coupling 1/2" bsp	£18.20	€19.20
820403	Straight rotary coupling 3/4" bsp	£26.80	€28.20
820404	Straight rotary coupling 1" bsp	£38.30	€40.20

Body Size	Max. Working Pressure	Max. Flow Rate	A	B Hex	(M) Thread	(F) Thread	C Hex
06	400	24	66	19	1/4"	1/4"	30
10	400	46	69	24	3/8"	3/8"	34
12	350	82	76	27	1/2"	1/2"	36
19	300	121	78.5	34	3/4"	3/4"	46
25	275	154	92.5	41	1"	1"	59

