



SERIES: RH

Carbon Steel
Screw Connect
Heavy Duty

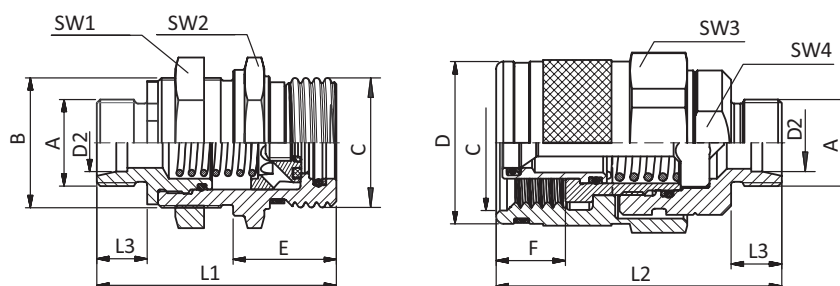
Large range of thread types available, metric heavy and light series

Product Features

- Flat Face
- Coupling made from carbon steel with Zinc/Nickel surface coating
- Sealing's made from FKM (Viton®), HNBR, PTFE
- Heavy duty internal components
- Suitable for panel mounting

Technical Features

Material	Carbon Steel
Surface Finishing	Zinc-Nickel
Standard Seal	NBR (Buna-N®), PTFE Other materials available on request
Working Temperature	-30° C ... +100° C / -22° F ... +212° F
Connection	Screw
Disconnection	Screw
Connect Under Pressure	Max. 20 bar / 290 PSI residual pressure with tools allowed
Application	Construction machinery



SW: Width across flats. All dimensions in mm

Dimensions (mm)

Nominal Size	Port A	B	C	∅D	∅D2	E	F	L1	L2	L3	SW1	SW2	SW3	SW4	Female Body Weight kg	Male Tip Weight kg
10	M14x1.5	M30x1	M32x3	39	8L	24	14	54	61	10	36	36	41	27	0.208	0.318
12.5	M22x1.5	M36x2	M36x3	45	15L	29	19.2	65	78	12	41	41	46	36	0.312	0.564
16	M26x1.5	M42x2	M48x3	59	18L	37	27.8	77	77	12	50	55	60	32	0.616	0.943
19	M30x2	M42x2	M54x4	64	22L	42	30.7	92	105	14	60	55	55	41	0.888	1.296
25	M45x2	M48x3	M79x4	90	35L	58	40	122	136	16	46	85	80	55	2.730	3.350

Technical Data

Series	DN			Q max	Working Pressure		Bursting Pressure				Spillage		
	ISO 4397				bar	PSI	Connected		Female Body			Male Tip	
	Inch	mm	l/min				bar	PSI	bar	PSI		bar	PSI
RH-10	3/8	10	46	420	6092	1300	18855	1350	19580	1450	21025	0.1	
RH-12	1/2	12.5	106	420	6092	1260	18275	1260	18275	1260	18275	0.16	
RH-16	5/8	16	148	420	6092	1260	18275	1260	18275	1260	18275	1.02	
RK-19	3/4	19	200	420	6092	1400	20305	1400	20305	1200	17405	0.86	
RH-25	1	25	500	420	6092	1150	16679	1100	15954	900	13053	2.84	

The indicated pressure ratings only apply to the coupling itself and depend on the connection type.

SERIES: RH

Carbon Steel
Screw Connect
Heavy Duty

Large range of thread types available, metric heavy and light series



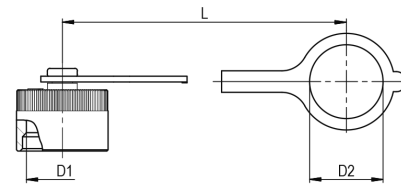
QUICK CONNECT COUPLINGS

Article no.	Description	Price £	Price €
730001	Screw Flat Face Female 10 Body 8L M14 x 1.5mm Male	£59.90	€62.90
730002	Screw Flat Face Male 10 Body 8L M14 x 1.5mm Male	£74.50	€78.20
730003	Screw Flat Face Female 12 Body 15L M22 x 1.5mm Male	£83.60	€87.80
730004	Screw Flat Face Male 12 Body 15L M22 x 1.5mm Male	£91.00	€95.60
730005	Screw Flat Face Female 16 Body 18L M26 x 1.5mm Male	£129.30	€135.80
730006	Screw Flat Face Male 16 Body 18L M26 x 1.5mm Male	£148.00	€155.40
730007	Screw Flat Face Female 19 Body 22L M30 x 2mm Male	£137.20	€144.10
730008	Screw Flat Face Male 19 Body 22L M30 x 2mm Male	£152.10	€159.70
730009	Screw Flat Face Female 25 Body 35L M45 x 2mm Male	£353.20	€370.90
730010	Screw Flat Face Male 25 Body 35L M45 x 2mm Male	£367.00	€385.40

SERIES: RH - DUST PROTECTION

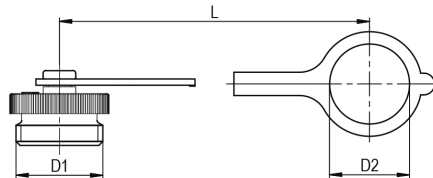
Dust Cap for Female Body

Size	D1	D2	L	Material	Article no.	Price £	Price €
10	M32x3	36.5	190	Plastic	RH10FR	£5.90	€7.10
12.5	M36x3	41	190	Red - Standard	RH12FR	£8.80	€10.60



Dust Plug for Male Tip

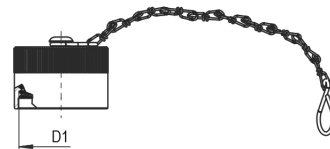
Size	D1	D2	L	Material	Article no.	Price £	Price €
10	M32x3	29.5	185	Plastic	RH10MR	£5.90	€7.10
12.5	M36x3	29.5	185	Red - Standard	RH12MR	£8.80	€10.60



In addition to the standard colours as stated above, plastic dust caps are also available in blue, green, yellow and black.

Dust Cap for Female Body

Size	D1	Material	Article no.	Price £	Price €
16	M48x3	Aluminium with chain	RH16FA	£58.70	€70.50
19	M54x4		RH19FA	£88.10	€105.80
25	M79x4		RH25FA	£99.90	€119.80



Dust Plug for Male Tip

Size	D1	Material	Article no.	Price £	Price €
16	M48x3	Aluminium with chain	RH16MA	£58.70	€70.50
19	M54x4		RH19MA	£88.10	€105.80
25	M79x4		RH25MA	£99.90	€119.80

