



SERIES: IB - ISO B

Carbon Steel

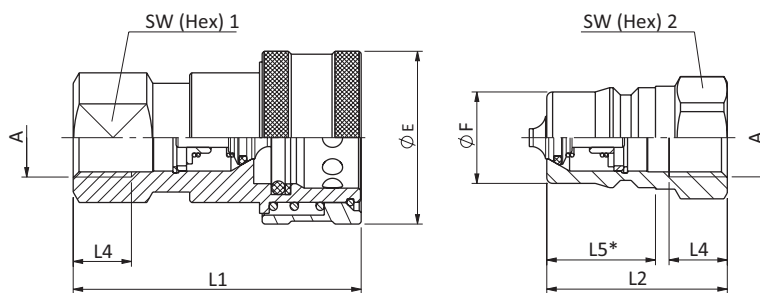
ISO Interchange according to ISO 7241-1 Series B

Product Features

- Poppet valve
- Coupling made from carbon steel with Zinc/Nickel surface coating
- Integrated locking system preventing unintentional release of the coupling

Technical Features

Material	Carbon Steel
Surface Finishing	Zinc-Nickel
Standard Seal	NBR (Buna-N®) Other materials available on request
Working Temperature	-25°C to +100°C / -13°F to +212°F
Connection	Push and actuate push sleeve
Disconnection	Actuate push sleeve
Connect Under Pressure	Not allowed
Application	Industrial Hydraulics



SW: Width across flats. All dimensions in mm
* Insertion Male Tip.

Dimensions (mm)

Nominal Size	Port A	ØE	ØF	L1	L2	L4 min	L5	SW1	SW2	Female Body Weight kg	Male Tip Weight kg
5	G1/8"	24	10.9	48	29			17	14	0.089	0.020
6.3	G1/4"	28.5	14.2	58	36	13	21.5	19	19	0.135	0.038
10	G3/8"	35	19.1	65	40	13	24.2	24	24	0.226	0.068
12	G1/2"	44.5	23.55	74	46.5	15	27.2	28.5	28.5	0.388	0.124
19	G3/4"	54	31.5	92	56	16	34	36	36	0.665	0.223
25	G1"	63.5	37.8	103	63	21	39.3	41	41	1.016	0.338

Technical Data

Series	DN			Q max	Working Pressure		Bursting Pressure				Spillage		
	ISO 4397				bar	PSI	Connected		Female Body			Male Tip	
	Inch	mm	l/min				bar	PSI	bar	PSI		bar	PSI
IB-05	1/8	3	4.5	300	4351	2000	29008	2300	33359	2400	34809	0.5	
IB-06	1/4	6.3	18	250	3626	1250	18130	1250	18130	1250	18130	1	
IB-10	3/8	10	34.5	250	3626	1250	18130	1250	18130	1250	18130	2.4	
IB-12	1/2	12.5	67.5	250	3626	1250	18130	1250	18130	1250	18130	3.9	
IB-19	3/4	19 (20)	159	250	3626	1000	14504	1000	14504	1000	14504	11	
IB-25	1"	25	378	200	2901	1000	14504	1000	14504	1000	14504	19	

The indicated pressure ratings only apply to the coupling itself and depend on the connection type.

SERIES: IB - ISO B

Carbon Steel

ISO Interchange according to ISO 7241-1 Series B



QUICK CONNECT COUPLINGS

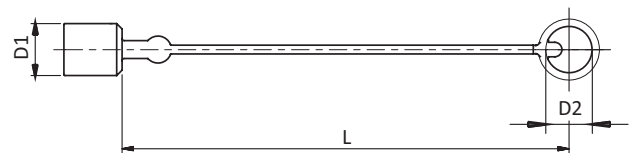
Article no.	Description	Price £	Price €
400011	ISO B Female 05 Body 1/8" BSPF	£7.70	€8.10
400012	ISO B Male 05 Body 1/8" BSPF	£3.50	€3.70
400001	ISO B Female 06 Body 1/4" BSPF	£8.20	€8.60
400002	ISO B Male 06 Body 1/4" BSPF	£6.80	€7.20
400003	ISO B Female 10 Body 3/8" BSPF	£9.80	€10.30
400004	ISO B Male 10 Body 3/8" BSPF	£4.10	€4.30
400005	ISO B Female 12 Body 1/2" BSPF	£12.60	€13.20
400006	ISO B Male 12 Body 1/2" BSPF	£4.90	€5.10
400007	ISO B Female 19 Body 3/4" BSPF	£19.80	€20.80
400008	ISO B Male 19 Body 3/4" BSPF	£7.80	€8.10
400009	ISO B Female 25 Body 1" BSPF	£33.80	€35.50
400010	ISO B Male 25 Body 1" BSPF	£14.00	€14.70

Larger sizes available on request

SERIES: IB - DUST PROTECTION

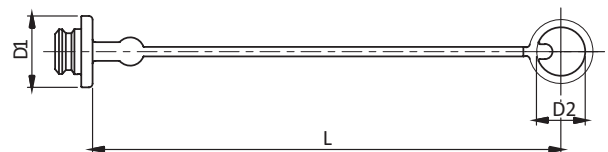
Dust Cap for Male Tip

Size	D1	D2	L	Material	Article no.	Price £	Price €
6.3	18	23	240	Plastic Red - Standard	IB06MR		
10	23	24	240		IB10MR		
12.5	29	28	245		IB12MR		
19	36	38	245		IB19MR		
25	44	46	253		IB25MR		



Dust Plug for Female Body

Size	D1	D2	L	Material	Article no.	Price £	Price €
6.3	26	23	240	Plastic Red - Standard	IB06FR		
10	33	24	235		IB10FR		
12.5	38	28	240		IB12FR		
19	49	38	240		IB19FR		
25	60	46	245		IB25FR		



In addition to the standard colours as stated above, plastic dust caps are also available in blue, green, yellow and black.