



SERIES: IA - ISO A

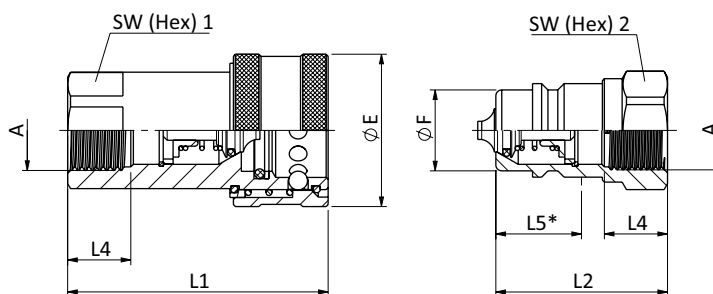
Carbon Steel
ISO Interchange according to ISO 7241-1 Series A

Product Features

- Poppet valve
- Coupling made from carbon steel with Zinc/Nickel surface coating
- Integrated locking system preventing unintentional release of the coupling
- Compatible with the HP Series

Technical Features

Material	Carbon Steel
Surface Finishing	Zinc-Nickel
Standard Seal	NBR (Buna-N®) Other materials available on request
Working Temperature	-25° C ... +100° C / -13° F ... +212° F
Connection	Push and actuate Push Sleeve
Disconnection	Actuate Push Sleeve
Connect Under Pressure	Not allowed
Application	Agricultural and Forestry Machinery



SW: Width across flats. All dimensions in mm
 * Insertion Male Tip.

Dimensions (mm)

Nominal Size	Port A	ØE	ØF	L1	L2	L4 min	L5	SW1	SW2	Female Body Weight kg	Male Tip Weight kg
6.3	G1/4"	26	11.8	50.5	35.5	12	14.5	19	19	0.119	0.038
10	G3/8"	30	17.3	58.5	40.5	12	17	22	22	0.157	0.059
12	G1/2"	37.9	20.5	68	46	14	21.5	27	27	0.295	0.097
19	G3/4"	45	29.1	84.3	57	16	20.8	34	34	0.510	0.165
25	G1"	52	34.35	97	63.5	18	33.5	41	41	0.636	0.285
31	G1 1/4"	70	45	115	69	20	34	50	50	1.47	0.48
38	G1 1/2"	80	55	123	73	22	50	60	60	1.980	0.738
51	G2"	102	65.1	147	90	24	57	70	70	3.490	1.168

Technical Data

Series	DN	DN	Q max	Working Pressure		Bursting Pressure						Spillage
						Connected		Female Body		Male Tip		
						Inch	mm	bar	PSI	bar	PSI	
IA-06	1/4	6.3	4.5	315	4569	1600	23206	1600	23206	1600	23206	0.5
IA-10	3/8	10	34.5	315	4569	1500	21756	1500	21756	1500	21756	1.9
IA-12	1/2	12.5	67.5	250	3626	1520	22046	1250	18130	1000	14504	2.7
IA-19	3/4	19 (20)	159	250	3626	1000	14504	1000	14504	1000	14504	9.3
IA-25	1	25	283.5	200	2901	1000	14504	1000	14504	1000	14504	19
IA-31	1 1/4	31	432	200	2901	800	11603	800	11603	800	11603	30
IA-38	1 1/2	38	758	160	2321	640	9282	640	9282	640	9282	54
IA-51	2	51	1135	150	2176	252	3655	252	3655	252	3655	120

The indicated pressure ratings only apply to the coupling itself and depend on the connection type.

SERIES: IA - ISO A

Carbon Steel

ISO Interchange according to ISO 7241-1 Series A



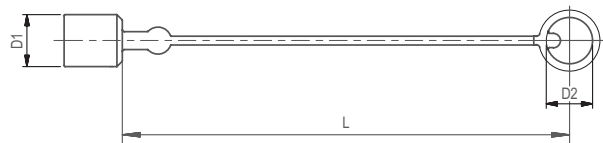
QUICK CONNECT COUPLINGS

Article no.	Description	Price £	Price €
610001	ISO A Female 06 Body 1/4" BSPF	£7.00	€7.40
610002	ISO A Male 06 Body 1/4" BSPF	£3.10	€3.20
610003	ISO A Female 10 Body 3/8" BSPF	£8.40	€8.90
610004	ISO A Male 10 Body 3/8" BSPF	£3.60	€3.80
610005	ISO A Female 12 Body 1/2" BSPF	£10.70	€11.20
610006	ISO A Male 12 Body 1/2" BSPF	£4.60	€4.80
610007	ISO A Female 19 Body 3/4" BSPF	£17.30	€18.10
610008	ISO A Male 19 Body 3/4" BSPF	£7.40	€7.80
610009	ISO A Female 25 Body 1" BSPF	£28.00	€29.40
610010	ISO A Male 25 Body 1" BSPF	£12.00	€12.60
610011	ISO A Female 31 Body 1 1/4" BSPF	£69.80	€73.20
610012	ISO A Male 31 Body 1 1/4" BSPF	£29.90	€31.40
610013	ISO A Female 38 Body 1 1/2" BSPF	£117.40	€123.30
610014	ISO A Male 38 Body 1 1/2" BSPF	£50.30	€52.80
610015	ISO A Female 51 Body 2" BSPF	£177.10	185.90
610016	ISO A Male 51 Body 2" BSPF	£75.90	€79.70

SERIES: IA - DUST PROTECTION

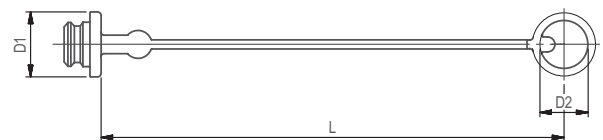
Dust Cap for Male Tip

Size	D1	D2	L	Material	Article no.	Price £	Price €
6	11	6	110	Plastic Red - Standard	IA06MR	£1.30	€1.50
10	24	22	220		IA10MR	£0.40	€0.50
12	29	26	250		IA12MR	£0.60	€0.80
19	36.5	36	270		IA19MR	£0.80	€1.00
25	36	28	235		IA25MR		



Dust Plug for Female Body

Size	D1	D2	L	Material	Article no.	Price £	Price €
6	10	6	110	Plastic Red - Standard	IA06FR	£1.10	€1.30
10	28	22	220		IA10FR	£1.70	€2.10
12	35	26	250		IA12FR	£0.60	€0.80
19	42	36	270		IA19FR	£0.80	€1.00
25	41	28	235		IA25FR	£1.00	€1.20



In addition to the standard colours as stated above, plastic dust caps are also available in blue, green, yellow and black.