



SERIES: HT

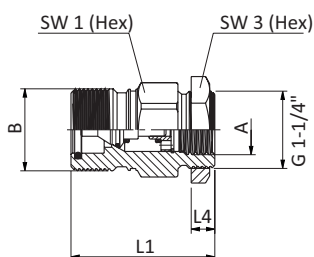
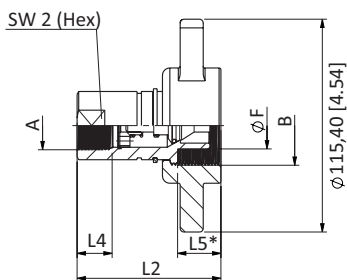
Carbon Steel
Tipper Trailer

Product Features

- Poppet Valve
- Heavy duty internal components
- Connect under residual pressure

Technical Features

Material	Carbon Steel
Surface Finishing	Zinc-Nickel
Standard Seal	NBR (Buna-N®)
	Other materials available on request
Working Temperature	-25° C ... +100° C / -13° F ... +212° F
Connection	Screw
Disconnection	Screw
Connect Under Pressure	Not allowed
Application	Industrial Hydraulic



SW: Width across flats. All dimensions in mm
* Insertion Male Tip.

Article no.	Description	Price £	Price €
780001	Screw Poppet Female 19 Body 3/4" BSPF	£40.30	€42.30
780002	Screw Poppet Male 19 Body 3/4" BSPF	£34.60	€36.30
780003	Screw Poppet Female 25 Body 1" BSPF	£40.30	€42.30
780004	Screw Poppet Male 25 Body 1" BSPF	£34.60	€36.30

Dimensions (mm)

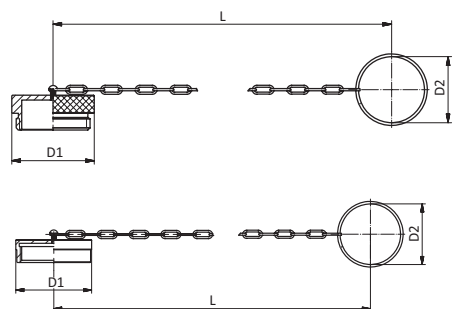
Nominal Size	Port A	ØB	ØF	L1	L2	L4 min	L5	SW1	SW2	SW3	Female Body Weight kg	Male Tip Weight kg
19	G3/4"	13/4"-12UN	25.3	78	78	16	23.5	46	33	50	0.850	0.746
25	G1"	UNS 21/8"	31.7	83	83	24	21	55	40	50	0.909	0.948

Technical Data

Series	DN	DN	Q max	Working Pressure	Bursting Pressure						Spillage	
					Connected		Female Body		Male Tip			
					Inch	mm	bar	PSI	bar	PSI		bar
HT-19	3/4	19 (20)	159	350	5076	1300	18855	1000	14504	1000	14504	10
HT-25	1	25	283.5	300	4351	1000	14504	1000	14504	1000	14504	15

The indicated pressure ratings only apply to the coupling itself and depend on the connection type.

SERIES: HT - DUST PROTECTION



Dust Plug for Female Body

Size	D1	D2	L	Material	Article no.	Price £	Price €
19	48.2	45	205	Carbon Steel	HT19FA	£7.60	€9.10
25	59.5	54	205	with Steel cable	HT25FA		

Dust Cap for Male Tip

Size	D1	D2	L	Material	Article no.	Price £	Price €
19	49.5	45	205	Carbon Steel	HT19MA	£9.20	€11.10
25	59.5	54	205	with Steel cable	HT25MA	£18.90	€22.70