



SERIES: HS

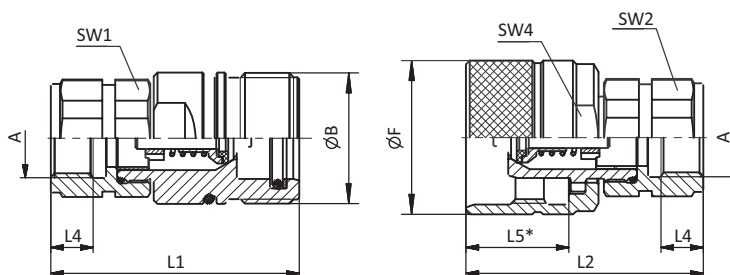
**Stainless Steel
Screw Connect
Heavy Duty**

Product Features

- Screw poppet valve
- Connectable up to 33% of working pressure with tools
- Self-locking connecting thread
- Black O-Ring - External O-ring as a safety feature to indicate the complete/correct connection of the male tip and female body (the O-ring must be covered by the sleeve of the female body)

Technical Features

Material	Stainless Steel V4A (AISI 316)
Standard Seal	FKM (Viton®) Other materials available on request
Working Temperature	-25° C ... +200° C / -13° F ... +392° F
Connection	Screw
Disconnection	Screw
Connect Under Pressure	Male Tip/Female Body up to 33% of the working pressure with tools
Application	Agricultural and Forestry Machinery, Construction Machinery, Industrial Hydraulic
ISO Interchange	ISO 14541 (BG 1-6)



SW: Width across flats. All dimensions in mm
* Insertion Female Body.

Dimensions (mm)

Nominal Size	Port A	ØB	ØF	L1	L2	L4 min	L5	SW1	SW2	SW4	Female Body Weight kg	Male Tip Weight kg
6.3	G1/4"	M24x2	30	59.1	58	12	25.1	19	19	27	0.122	0.130
10	G3/8"	M28x2	34	64.5	62	12	26.5	22	22	30	0.163	0.174
12	G1/2"	M36x2	41.8	67	63	12	28	30	30	38	0.312	0.281
19	G3/4"	M42x2	48	82	75	16	21	36	36	41	0.511	0.441
25	G1"	M48x3	55	95	78.5	18	35.5	41	18	50	0.713	0.615
38	G1 1/4"	M70x3	80	116	121	20	44	60	20	65	1.802	2.350
38	G1 1/2"	M70x3	80	116	121	20	44	60	20	65	1.730	2.278

Technical Data

Series	DN			Q max	Working Pressure		Bursting Pressure				Spillage		
	ISO 4397						Connected		Female Body			Male Tip	
	Inch	mm	l/min		bar	PSI	bar	PSI	bar	PSI		bar	PSI
HS-06	1/4	6.3	17	300	4351	1200	17450	1200	17450	1200	17450	0.8	
HS-10	3/8	10	30	250	3626	2400	34809	1600	23206	1450	21031	1.9	
HS-12	1/2	12.5	80	250	3626	2150	31183	1420	20595	1350	19580	2.7	
HS-19	3/4	19 (20)	190	150	2176	1400	20305	1100	15954	700	10153	9.3	
HS-25	1	25	280	150	2176	1350	19580	1100	15954	800	11603	16	
HS-38	1 1/4	38	350	100	1450	400	5802	400	5802	400	5802	30	

The indicated pressure ratings only apply to the coupling itself and depend on the connection type.

SERIES: HS

**Stainless Steel
Screw Connect
Heavy Duty**



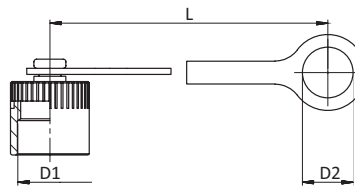
QUICK CONNECT COUPLINGS

Article no.	Description	Price £	Price €
770001	Screw Poppet Female 06 Body 1/4" BSPF	£69.50	€73.00
770002	Screw Poppet Male 06 Body 1/4" BSPF	£97.30	€102.10
770003	Screw Poppet Female 10 Body 3/8" BSPF	£77.30	€81.20
770004	Screw Poppet Male 10 Body 3/8" BSPF	£109.40	€114.90
770005	Screw Poppet Female 12 Body 1/2" BSPF	£97.10	€102.00
770006	Screw Poppet Male 12 Body 1/2" BSPF	£122.60	€128.70
770007	Screw Poppet Female 19 Body 3/4" BSPF	£160.80	€168.90
770008	Screw Poppet Male 19 Body 3/4" BSPF	£217.60	€228.40
770009	Screw Poppet Female 25 Body 1" BSPF	£212.50	€223.10
770010	Screw Poppet Male 25 Body 1" BSPF	£282.90	€297.10
770011	Screw Poppet Female 38 Body 1 1/4" BSPF	£503.70	€528.90
770012	Screw Poppet Male 38 Body 1 1/4" BSPF	£689.00	€723.40
770013	Screw Poppet Female 38 Body 1 1/2" BSPF	£503.70	€528.90
770014	Screw Poppet Male 38 Body 1 1/2" BSPF	£689.00	€723.40

SERIES: HS - DUST PROTECTION

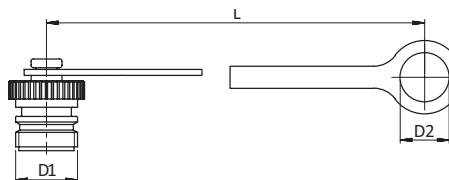
Dust Cap for Female Body

Size	D1	D2	L	Material	Article no.	Price £	Price €
6	M24x2	19	180	Plastic Red - Standard	HS06MR	£4.80	€5.80
10	M28x2	23	180		HS10MR	£5.30	€6.40
12	M36x2	29.5	185		HS12MR	£3.50	€4.20
19	M42x2	36.5	190		HS19MR	£4.20	€5.00
25	M48x3	41	190		HS25MR	£3.70	€4.40
38	M70x3	55	201		HS38MR	£12.10	€14.60



Dust Plug for Male Tip

Size	D1	D2	L	Material	Article no.	Price £	Price €
6	M24x2	19	180	Plastic Red - Standard	HS06FR	£4.80	€5.80
10	M28x2	23	180		HS10FR	£5.30	€6.40
12	M36x2	29.5	185		HS12FR	£3.50	€4.20
19	M42x2	36.5	190		HS19FR	£4.20	€5.00
25	M48x3	41	190		HS25FR	£3.70	€4.40
38	M70x3	55	201		HS38FR	£12.10	€14.60



In addition to the standard colours as stated above, plastic dust caps are also available in blue, green, yellow and black.