

SP10-57D

5 Way, 3 Position, Spool, 207 BAR Rated

A solenoid-operated, five-way, three-position, proportional, screw-in hydraulic cartridge valve with integral load-sense port.



Voltage	Hydraforce code	Article no.	Price £	Price €
CARTRIDGE VERSION				
24V DC	SP10-57D-0-N-24DG	SP1057DC24	£308.00	€369.60
INLINE WITH BODY SAE6				
24V DC	SP10-57D-6T-N-24DG	SP1057D6T24	£586.70	€704.00
INLINE WITH BODY SAE8				
24V DC	SP10-57D-8T-N-24DG	SP1057D8T24	£597.20	€716.60
with nitril seals				
WITH 'G' DIN CONNECTOR PLUG				

On request - Viton Seals - Screen filter protection - Manual Override
 On request - For DC coils with spade or push on connections

Materials

Cartridge:

Weight: 0.36 kg. (0.80 lbs.)
 Steel with hardened work surfaces.
 Zinc-plated exposed surfaces.
 Buna N O-rings and back-ups standard.

Standard Ported Body:

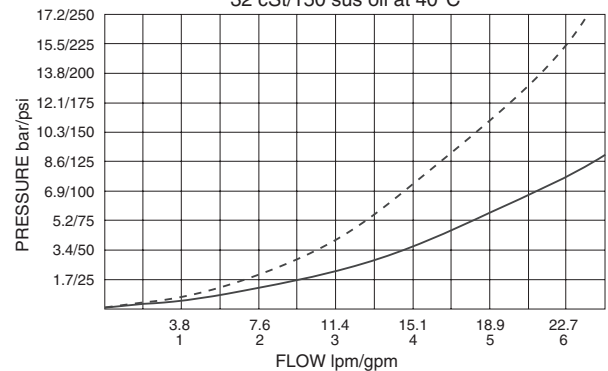
Weight: 0.41 kg. (0.85 lbs.)
 Anodized highstrength 6061 T6 aluminum alloy, rated to 207 bar (3000 psi).
 Ductile iron bodies available; dimensions may differ.

Standard Coil:

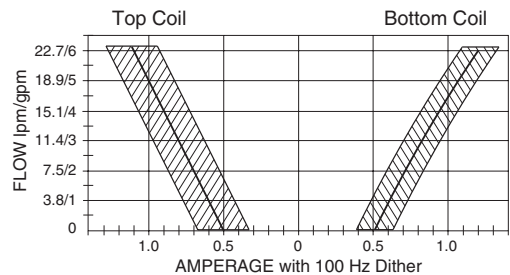
Weight each: 0.27 kg. (0.60 lbs.)
 Unitized thermoplastic encapsulated.

Performance

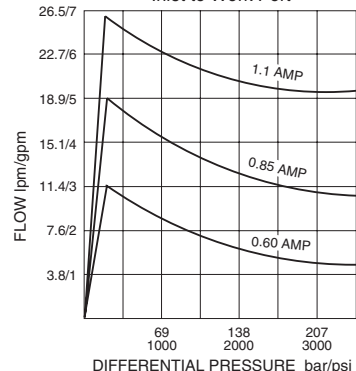
⑤ to ② or ⑤ to ④ at 100% current, S1 or S2 energized: - - - - -
 ④ to ③ or ② to ③ at 100% current, S1 or S2 energized: _____
 32 cSt/150 sus oil at 40°C



Performance with 12 VDC Coils and 10.3 bar/150 psi inline compensator (for other voltages consult factory)

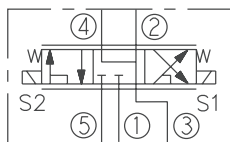


Pressure Compensation Inlet to Work Port

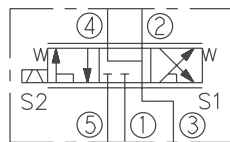


Symbols

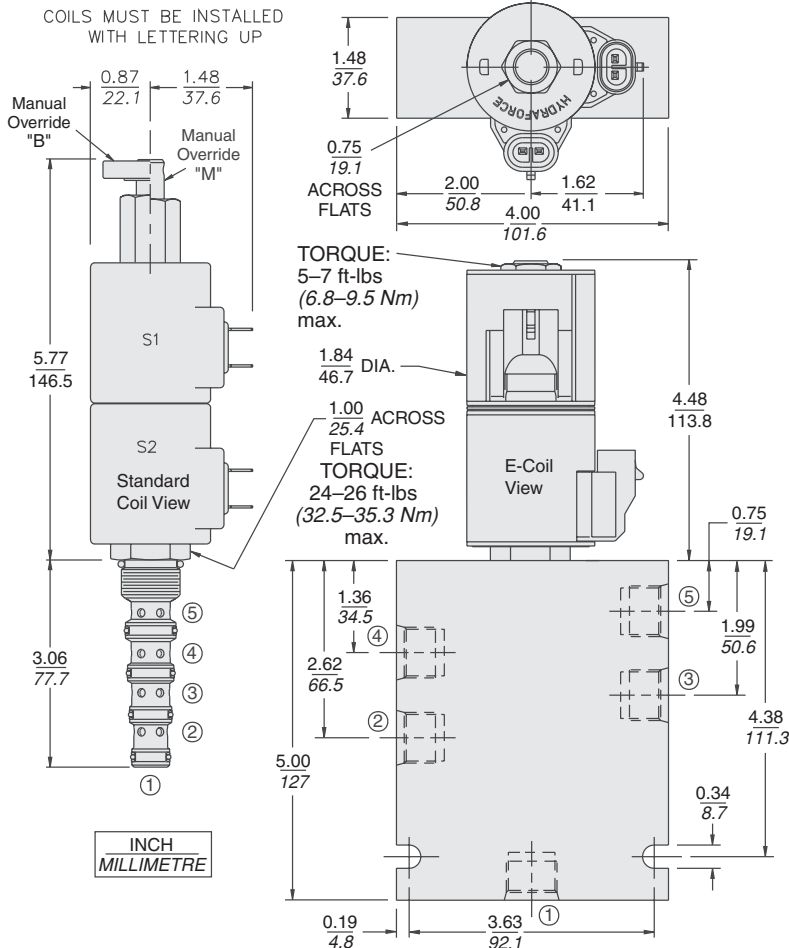
USASI:



ISO:



Dimensions



Please contact our technical sales team for electronic controller options