



# SP10-57C

5 Way, 3 Position, Spool, 207 BAR Rated

A solenoid-operated, 5-way, 3-position, proportional, screw-in hydraulic cartridge valve with integral load-sense port.

## Materials

### Cartridge:

Weight: 0.36 kg. (0.80 lbs.)  
Steel with hardened work surfaces.  
Zinc-plated exposed surfaces.  
Buna N O-rings and back-ups standard.

### Standard Ported Body:

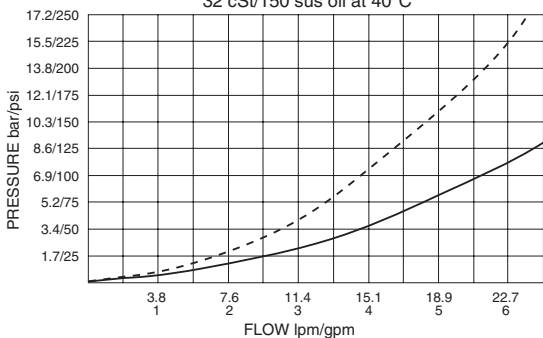
Weight: 0.41 kg. (0.85 lbs.)  
Anodized highstrength 6061 T6 aluminum alloy, rated to 207 bar (3000 psi).  
Ductile iron bodies available; dimensions may differ.

### Standard Coil:

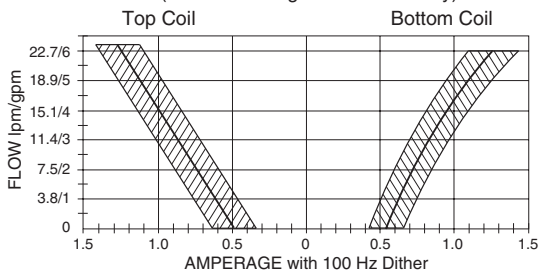
Weight each: 0.27 kg. (0.60 lbs.)  
Unitized thermoplastic encapsulated.

## Performance

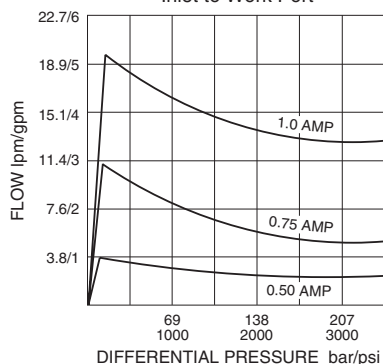
⑤ to ② or ⑤ to ④ at 100% current, S1 or S2 energized: - - - - -  
④ to ③ or ② to ③ at 100% current, S1 or S2 energized: \_\_\_\_\_  
32 cSt/150 sus oil at 40°C



Performance with 12 VDC Coils and 10.3 bar/150 psi inline compensator (for other voltages consult factory)

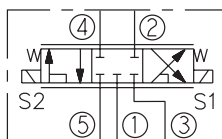


Pressure Compensation Inlet to Work Port

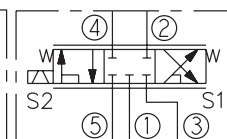


## Symbols

### USASI:

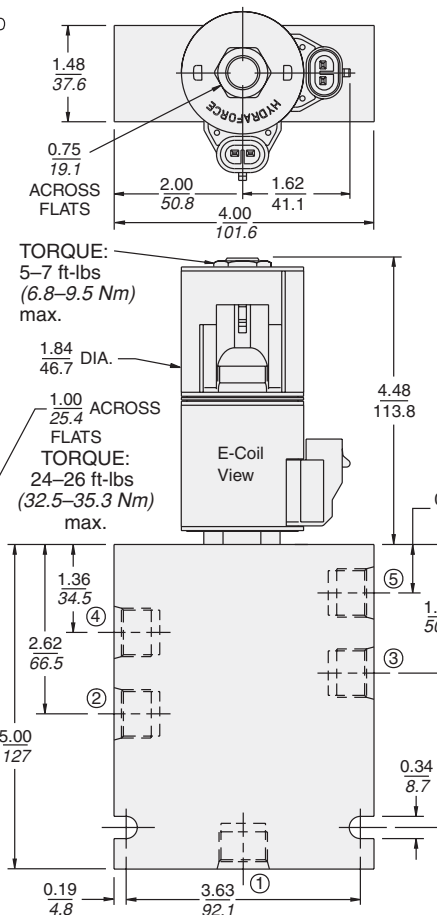
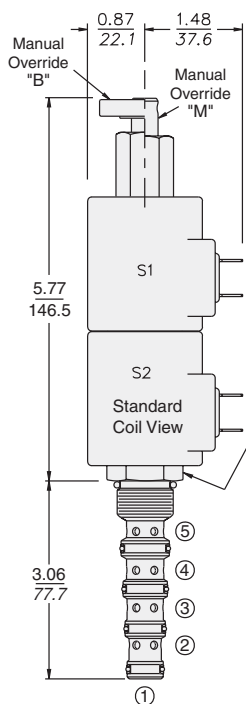


### ISO:



## Dimensions

COILS MUST BE INSTALLED WITH LETTERING UP



INCH  
MILLIMETRE

Voltage	Hydraforce code	Article no.	Price £	Price €
<b>CARTRIDGE VERSION</b>				
24V DC	SP10-57C-0-N-24DG	SP1057CC24	£308.00	€369.60
<b>INLINE WITH BODY SAE6</b>				
24V DC	SP10-57C-6T-N-24DG	SP1057C6T24	£586.70	€704.00
<b>INLINE WITH BODY SAE8</b>				
24V DC	SP10-57C-8T-N-24DG	SP1057C8T24	£597.20	€716.60
<b>with nitril seals</b>				
<b>WITH 'G' DIN CONNECTOR PLUG</b>				

On request - Viton Seals - Screen filter protection - Manual Override  
On request - For DC coils with spade or push on connections

Please contact our technical sales team for electronic controller options