



SF08-21 HIGH PRESSURE

2 Way, Normally Open, 345 BAR Rated

A solenoid-operated, 2-way, piloted, poppet-type, normally open, screw-in, hydraulic cartridge valve designed for low leakage in higher pressure load-holding applications.

Materials

Cartridge:

Weight: 0.09 kg. (0.20 lbs.)
Steel with hardened work surfaces.
Zinc-plated exposed surfaces.
Polyurethane cast O-rings and
Fluorocarbon back-up standard.

Ported Body:

Weight: 0.54 kg. (1.2 lbs.)
Ductile iron standard.
Rated to 345 bar (5000 psi);

Standard Coil:

Weight: 0.11 kg. (0.25 lbs.)
Unitized thermoplastic encapsulated

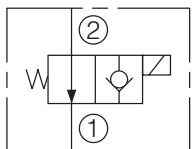
Voltage	Hydraforce code	Article no.	Price £	Price €
CARTRIDGE VERSION				
24V DC	SF08-21-0-P-24DG	SF0821C24	£156.60	€187.90
110V AC	SF08-21-0-P-115AG	SF0821C115	£181.60	€217.90
220V AC	SF08-21-0-P-230AG	SF0821C230	£189.00	€226.80
INLINE WITH DUCTILE IRON BODY 3/8" BSP				
24V DC	SF08-21-3BD-P-24DG	SF08213B24	£270.80	€325.00
110V AC	SF08-21-3BD-P-115AG	SF08213B115	£295.80	€354.90
220V AC	SF08-21-3BD-P-230AG	SF08213B230	£303.20	€363.80
with polyurethane seals				
WITH 'G' DIN CONNECTOR PLUG				

On request - Viton Seals - Screen filter protection - Manual Override

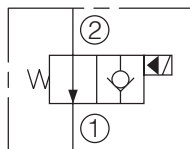
On request - For DC coils with spade or push on connections

Symbols

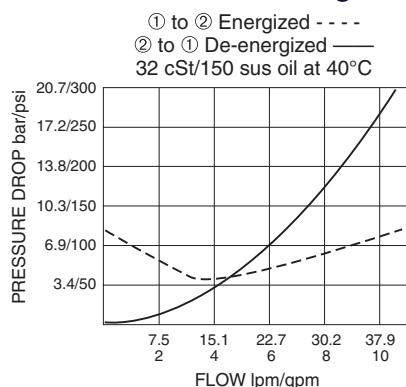
USASI:



ISO:



Performance (Cartridge Only)



Dimensions

