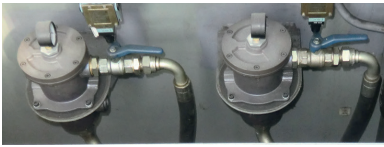


Application Example



SUCTION FILTER - SD

Flow Rates up to 500lpm

Pressure (ISO 10771-1:2002)

Collapse, differential for the filter element (ISO 2941): 1 MPa (10 bar)

Bypass Valve

Setting: 35 kPa (0,35 bar) ± 10%

Working Temperature

From -25° to +110° C

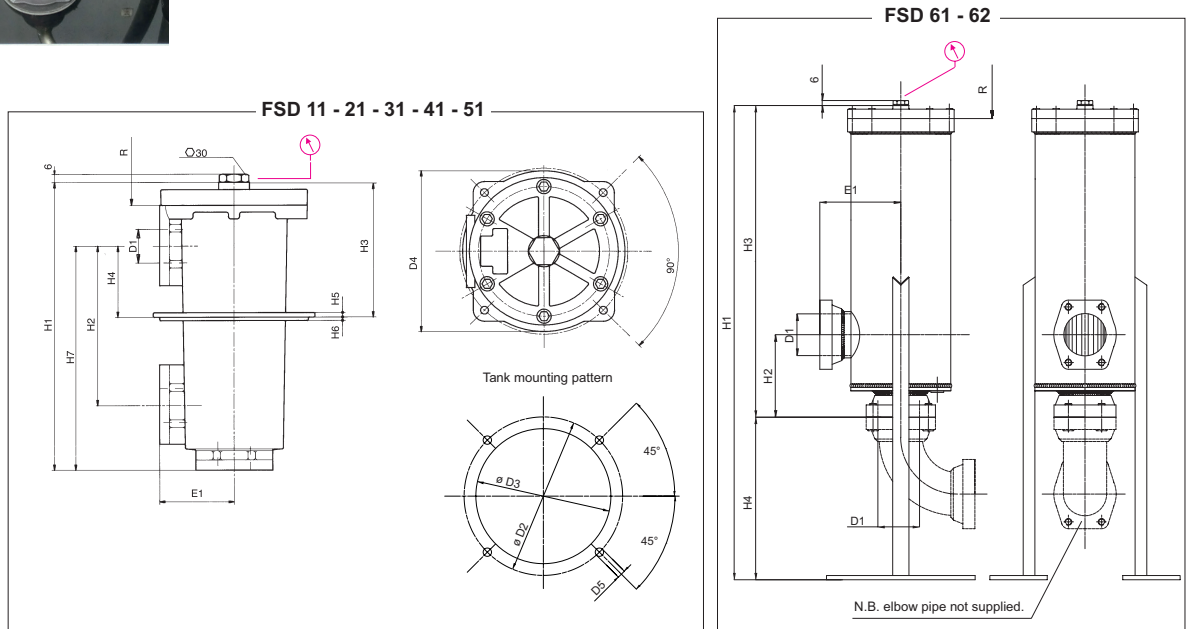
Compatibility (ISO 2943:1999)

Full with fluids: HH-HL-HM-HV-HTG (according to ISO 6743/4)

For fluids different than the above mentioned, please contact our Sales Department.

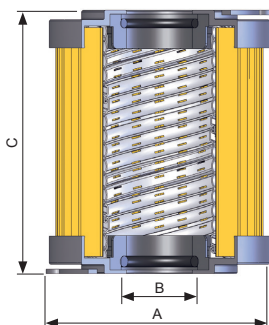
Materials

- Cover & housing: Anodized aluminium alloy
- For 61&62 only: Cover: anodized aluminium alloy
- Housing: Steel
- Bypass valve: Polyamide
- Seals: NBR Nitrile (FKM on request fluoroelastomer)
- Indicator housing: Brass



Dimensions (mm) - FILTER HOUSING

	D1	D2	D3	D4	D5	E1	H1	H2	H3	H4	H5	H6	R	kg
FSD11	1/2"	95	85	90	M5	43	160	62.5	96	31.5	4	3	105	1.3
FSD21	3/4"	138	123	128	M6	57	191	105	100	52	6	3	110	2.6
FSD31	1"	154	137	147	M6	67	250	140	117	63	8	4	155	3.7
FSD41	1 1/2"	180	164	174	M8	82	323	177	155	82	8	4	240	6.5
FSD51	2 1/2"	275	239	254	M10	117.5	420	218	192	91	10	8	275	14.2
FSD61	3 1/2"	-	-	-	-	178	1130	200	673	457	-	-	525	49.0
FSD62	4"	-	-	-	-	178	1590	200	1110	480	-	-	1020	75.0



Dimensions (mm) - FILTER ELEMENT

	A	B	C	kg	Area (cm ²) media M+
ESD11	52	28/24	70	0.10	245
ESD21	70	34	85	0.20	460
ESD31	70	34	130	0.25	740
ESD41	99	51	211	0.70	2.330
ESD51	130	74	251	1.50	3.340
ESD61	130	74/85	500	2.00	9.860
ESD62	143	96.3	896	3.80	22.000

SUCTION FILTER - SD

Ordering Codes - Filter



<input type="checkbox"/>	Type							
	F = Filter Complete	F	F	F	F	F	F	F
	B = Filter Housing	B	B	B	B	B	B	B
S	D							
	Family, Nominal Size, Length	11	21	31	41	51	61	62
<input type="checkbox"/>	Port Type							
	B = BSP Thread	B	B	B	B	B	-	-
	N = NPT Thread	N	N	N	N	N	-	-
	S = SAE Thread	S	S	S	S	S	-	-
	F = SAE flanged 3000psi, metric screws	-	-	F	F	F	F	F
<input type="checkbox"/>	Port Size							
	04 = 1/2"	04	-	-	-	-	-	-
	06 = 3/4"	-	06	-	-	-	-	-
	08 = 1"	-	-	08	-	-	-	-
	12 = 1 1/2"	-	-	-	12	-	-	-
	20 = 2 1/2"	-	-	-	-	20	-	-
	28 = 3 1/2"	-	-	-	-	-	28	-
	32 = 4"	-	-	-	-	-	-	32
<input type="checkbox"/>	Bypass Valve							
	W = Without	W	W	W	W	W	W	W
	A = 35 kPa (0.35 bar)	A	A	A	A	A	A	A
<input type="checkbox"/>	Seals							
	N = NBR Nitrile	N	N	N	N	N	N	N
	F = FKM Fluoroelastomer	F	F	F	F	F	F	F
<input type="checkbox"/>	Filter Media							
	ME = Metal wire mesh 60µm	ME	ME	ME	ME	ME	ME	ME
	MF = Metal wire mesh 90µm	MF	MF	MF	MF	MF	MF	MF
	MG = Metal wire mesh 250µm	MG	MG	MG	MG	MG	MG	MG
<input type="checkbox"/>	Clogging Indicator							
	08 = 1/8" seat, plugged	08	08	08	08	08	08	08
	11 = vacuum gauge, bottom connection	11	11	11	11	11	11	11
	91 = SPDT, vacuum switch	91	91	91	91	91	91	91
X	X							
	Accessories = no access available	XX	XX	XX	XX	XX	XX	XX

FLUID SPEED

(when selecting the filter size, we suggest to consider also the max recommended fluid speed (in suction lines normally $0,1 < v < 1$ m/s)

