

SUCTION FILTER SC HEAVY SERIES

FLOW RATES UP TO 500LPM

Pressure (ISO 10771-1:2002)

Collapse, differential for the filter element (ISO 2941): 100 kPa (1 bar)

Working Temperature

From -25° to + 110° C

Compatibility (ISO 2943:1999)

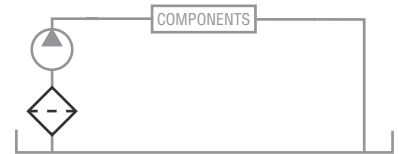
Full with fluids: HH-HL-HM-HV-HTG (according to ISO 6743/4)

For fluids different than the above mentioned, please contact our Sales Department.

Materials

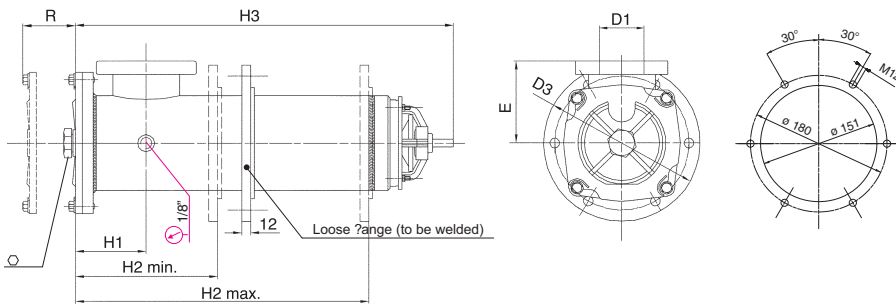
SC51 & SC61

Housing: Steel
 Cover: Aluminium
 Shut-off valve: Polyamide
 Seals: NBR Nitrile
 (FKM - on request fluoroelastomer)
 Indicator housing: Brass



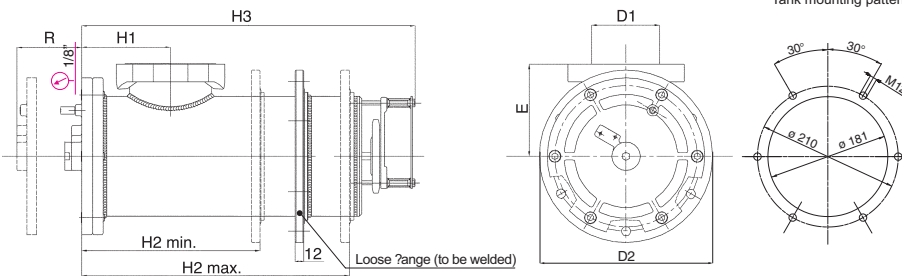
FSC 51

Tank mounting pattern



FSC 61

Tank mounting pattern



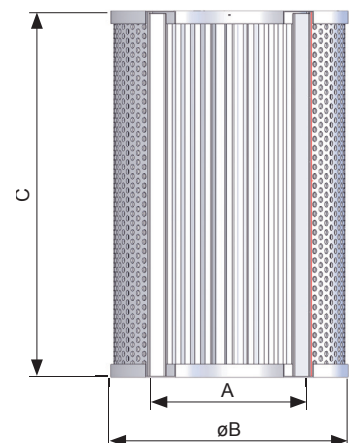
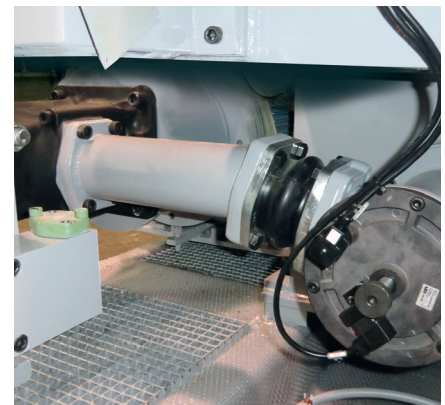
Dimensions (mm) - FILTER HOUSING

	D1	D2	E	H1	H2*	H3	R	O	kg
FSC51	3"	210	110	95	174 + 355	480	500	32	13
FSC61	4"	242	130	122	250 + 405	470	500	32	16

Dimensions (mm) - FILTER ELEMENT

	A	B	C	kg	Area (cm ²) media M+
ESC51	65	99	375	0.90	3.545
ESC61	93	136	375	1.60	5.065

Application Example



SUCTION FILTER SC STANDARD & HEAVY SERIES

Ordering Codes - Filter

		<input type="checkbox"/>	Type	Standard				Heavy	
			F = Filter Complete	F	F	F	F	F	F
			B = Filter Housing	B	B	B	B	B	B
<input type="checkbox"/>	<input type="checkbox"/>	<input type="checkbox"/>	Family, Nominal Size, Length	31	41	71	81	51	61
		<input type="checkbox"/>	Port Type						
			B = BSP thread	B	B	-	-	F	F
			F = SAE flange 3000 psi	-	F	F	F	-	-
<input type="checkbox"/>	<input type="checkbox"/>	<input type="checkbox"/>	Port Size						
			10 = 1 1/4" (B10 only)	10	-	-	-	-	-
			12 = 1 1/2" (B12 only)	-	12	-	-	-	-
			16 = 2" (F16 only)	-	16	-	-	-	-
			20 = 2 1/2" (F20 only)	-	20	-	-	-	-
			24 = 3"	-	-	24	-	24	-
			32 = 4"	-	-	-	32	-	32
<input type="checkbox"/>	<input type="checkbox"/>	<input type="checkbox"/>	Bypass Valve						
			W = Without	W	W	W	W	W	W
		<input type="checkbox"/>	Seals						
			N = NBR Nitrile	N	N	N	N	N	N
			F = FKM Fluoroelastomer	F	F	F	F	F	F
			G = Treatment for water-glycol	G	G	G	G	G	G
<input type="checkbox"/>	<input type="checkbox"/>	<input type="checkbox"/>	Filter Media						
			ME = Metal wire mesh 60µm	ME	ME	ME	ME	ME	ME
			MF = Metal wire mesh 90µm	MF	MF	MF	MF	MF	MF
			MG = Metal wire mesh 250µm	MG	MG	MG	MG	MG	MG
<input type="checkbox"/>	<input type="checkbox"/>	<input type="checkbox"/>	Clogging Indicator						
			01 = 1/8" port, plugged	-	-	-	-	-	01
			04 = nr. 2 x 1/8" seats, plugged	04	04	04	04	04	-
			10 = vacuum gauge, rear connection	10	10	10	10	10	10
			91 = SPDT, vacuum switch	91	91	91	91	91	91
<input type="checkbox"/>	<input type="checkbox"/>	<input type="checkbox"/>	Accessories						
			W = without	W	W	W	W	W	W
			M = magnetic core	-	M	M	M	M	M
<input type="checkbox"/>	<input type="checkbox"/>	<input type="checkbox"/>	Accessories						
			W = without	W	W	W	W	W	W
			S = safety microswitch	-	S	S	S	S	S

Ordering Codes - Element

		<input type="checkbox"/>	Element						
<input type="checkbox"/>	<input type="checkbox"/>	<input type="checkbox"/>	Family, Nominal Size, Length	31	41	71	81	51	61
		<input type="checkbox"/>	Seals						
			X = not applicable	X	X	X	X	X	X
			G = Treatment for water-glycol	G	G	G	G	G	G
<input type="checkbox"/>	<input type="checkbox"/>	<input type="checkbox"/>	Filter Media						
			ME = Metal wire mesh 60µm	ME	ME	ME	ME	ME	ME
			MF = Metal wire mesh 90µm	MF	MF	MF	MF	MF	MF
			MG = Metal wire mesh 250µm	MG	MG	MG	MG	MG	MG

SUCTION FILTER SC STANDARD SERIES

Flow Rates up to 500lpm

Pressure (ISO 10771-1:2002)

Collapse, differential for the filter element (ISO 2941): 100 kPa (1 bar)

Working Temperature

From -25° to +110° C

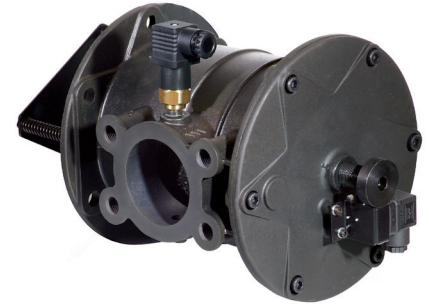
Compatibility (ISO 2943:1999)

Full with fluids: HH-HL-HM-HV-HTG (according to ISO 6743/4)

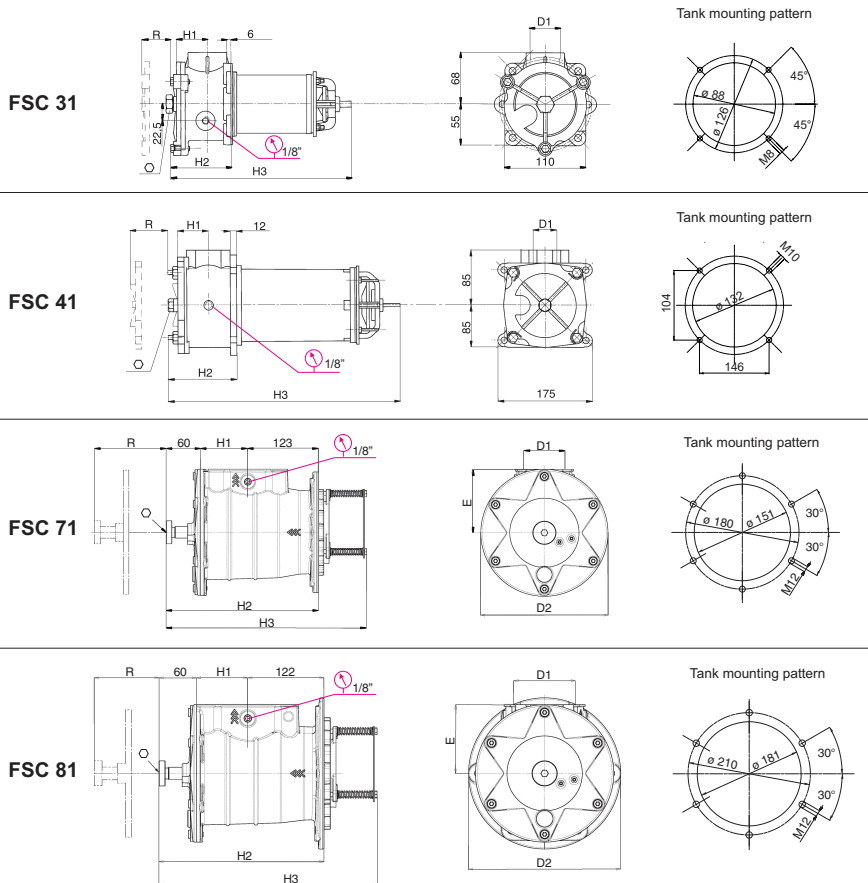
For fluids different than the above mentioned, please contact our Sales Department.

Materials

SC31 & SC41	Cover & head:	Aluminium alloy
	Bowl:	Polyamide
SC71 & SC81	Cover & housing:	Aluminium
	Shut-off valve:	Polyamide
	Seals:	NBR Nitrile (FKM - on request fluoroelastomer)
	Indicator housing:	Brass



Application Example



Dimensions (mm) - FILTER HOUSING

	D1	D2	E	H1	H2	H3	R	O	kg
FSC31	11/4"	-	-	42	80	275	250	22	1.6
FSC41	11/2" - 2" - 21/2"	-	-	66	120	322	300	32	3.0
FSC71	3"	220	110	82	265	348.5	250	10	5.5
FSC81	4"	242	110	82	264	348.5	250	10	6.0

Dimensions (mm) - FILTER ELEMENT

	A	B	C	kg	Area (cm ²) media M+
ESC31	29.5	70	163	0.25	1.6
ESC41	65	99	198	0.50	1.845
ESC71	77	120	196	0.80	2400
ESC81	93	136	196	0.90	2600

