



SUCTION FILTER ELEMENTS SA & SB

SA - STANDARD SUCTION FILTER ELEMENT
SB - FITTED WITH MAGNETIC CORE

Pressure (ISO 10771-1:2002)

Collapse, differential: 100 kPa (1 bar)

Bypass Valve (optional)

Setting: 30 kPa (0,3 bar) ± 10%

Filtration

90 micron - Standard

60 micron and 250 micron - On request

Working Temperature

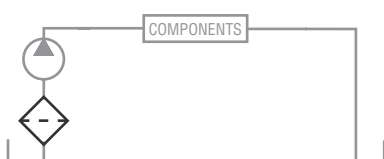
From -25° to +110° C

Compatibility (ISO 2943:1999)

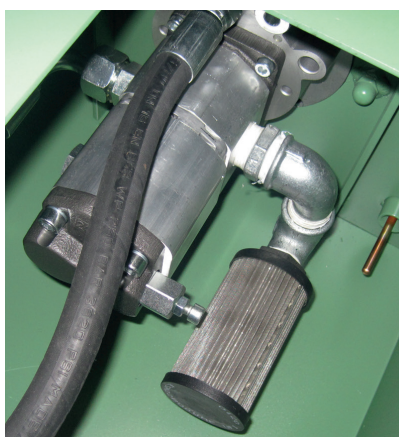
Full with fluids: HH-HL-HM-HV-HTG

(according to ISO 6743/4)

For fluids different than the above mentioned, please contact our Sales Department.



Application Example



Materials

- Connector: Polyamide
(Aluminium for ESA & ESB 51 - 52)
- End cap: Polyamide
(Zinc plated steel for ESA & ESB 51 - 52)
- Bypass valve: (SA) Polyamide
- Magnetic core: (SB) Syntherized magnetic material

90 MICRON SUCTION FILTER ELEMENTS

Series	Connection	Article No	Flow Rate	Price	Price
Type	Bsp	90 Micron	Max Lpm	£	€
ESA11	3/8"	ESA1138	9 LPM	ON REQUEST	
ESA11	1/2"	ESA1112	11 LPM	ON REQUEST	
ESA21	3/4"	ESA2134	24 LPM	ON REQUEST	
ESA22	1"	ESA2210	55 LPM	ON REQUEST	
ESA30	1 1/4"	ESA30114	75 LPM	ON REQUEST	
ESA30	1 1/2"	ESA30112	100 LPM	ON REQUEST	
ESA41	2"	ESA4120	150 LPM	ON REQUEST	
ESA42	3"	ESA4230	360 LPM	ON REQUEST	
ESA52	4"	ESA5240	540 LPM	ON REQUEST	

60 MICRON & 250 MICRON ARE AVAILABLE ON REQUEST
ALSO AVAILABLE WITH MAGNETIC CORE OPTION

90 MICRON SUCTION FILTER ELEMENTS WITH BYPASS

Series	Connection	Article No	Flow Rate	Price	Price
Type	Bsp	90 Micron	Max Lpm	£	€
ESA11	3/8"	ESA1138B	9 LPM	ON REQUEST	
ESA11	1/2"	ESA1112B	11 LPM	ON REQUEST	
ESA21	3/4"	ESA2134B	24 LPM	ON REQUEST	
ESA22	1"	ESA2210B	55 LPM	ON REQUEST	
ESA30	1 1/4"	ESA30114B	75 LPM	ON REQUEST	
ESA30	1 1/2"	ESA30112B	100 LPM	ON REQUEST	
ESA41	2"	ESA4120B	150 LPM	ON REQUEST	
ESA42	3"	ESA4230B	360 LPM	ON REQUEST	

60 MICRON & 250 MICRON ARE AVAILABLE ON REQUEST
THE BYPASS OPENS AT 0.30 BAR SUCTION

SUCTION FILTER ELEMENTS SA & SB

SA - STANDARD SUCTION FILTER ELEMENT
SB - FITTED WITH MAGNETIC CORE

Ordering Codes

			E	Filter Element	
S	A			Family, Nominal Size, Length	SA = Standard SB = with Magnetic Core
					11 21 22 30 31 32 40 41 42 43 51 52

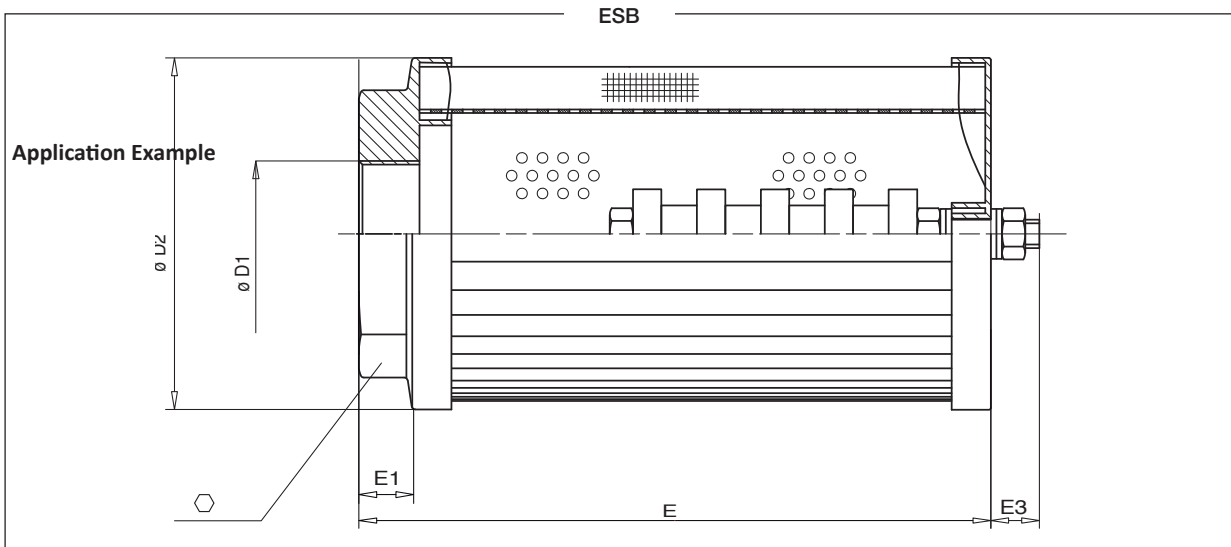
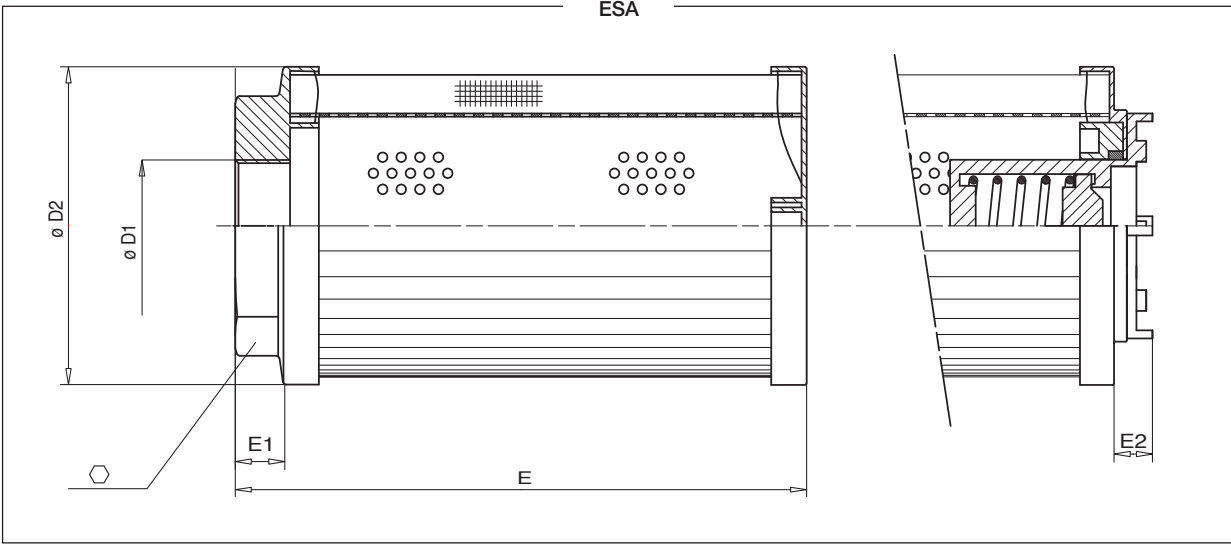
				Port Type	
				B = BSP Thread	B B B B B B B B B B B B
				N = NPT Thread	N N N N N N N N N N - -

				Port Size	
				03 = 3/8"	03 - - - - - - - - - - - -
				04 = 1/4"	04 04 - - - - - - - - - - - -
				06 = 3/4"	- 06 06 - - - - - - - - - -
				08 = 1"	- - 08 - - - - - - - - - -
				10 = 1 1/4"	- - - 10 10 10 - - - - - - - -
				12 = 1 1/2"	- - - 12 12 12 12 12 - - - - -
				16 = 2"	- - - - - 16 16 16 16 - - - -
				20 = 2 1/2"	- - - - - - - - - 20 - - - -
				24 = 3"	- - - - - - - - - 24 24 - - -
				28 = 3 1/2"	- - - - - - - - - - - 28 -
				32 = 4"	- - - - - - - - - - - - 32

				Bypass Valve	
				W = Without	W W W W W W W W W W W W
				A = 30 kPa (0.3 bar)	A A A A A A A A A A A A

				Filter Media	
				ME = Metal wire mesh 60µm	ME ME ME ME ME ME ME ME ME ME ME ME
				MF = Metal wire mesh 90µm	MF MF MF MF MF MF MF MF MF MF MF MF
				MG = Metal wire mesh 250µm	MG MG MG MG MG MG MG MG MG MG MG MG

SUCTION FILTER ELEMENTS SA & SB



Dimensions (mm) - FILTER ELEMENT

	D1	D2	E	E2	E3	O	kg SA	kg SB
ESA 11 / ESB 11	3/8" - 1/2"	52	73	13	9	30	0.05	0.10
ESA 21 / ESB 21	1/2" - 3/4"	70	92	11	12	42	0.25	0.30
ESA 22 / ESB 22	3/4" - 1"	70	137	11	13	42	0.25	0.30
ESA 30 / ESB 30	1 1/4" - 1 1/2"	99	135	12	12	70	0.30	0.35
ESA 31 / ESB 31	1 1/4" - 1 1/2"	99	178	12	12	70	0.40	0.45
ESA 32 / ESB 32	1 1/4" - 1 1/2" - 2"	99	218	12	14	70	0.50	0.60
ESA 40 / ESB 40	1 1/2" - 2"	130	160	15	14	70	0.50	0.60
ESA 41 / ESB 41	1 1/2" - 2"	130	201	15	14	70	0.70	0.80
ESA 42 / ESB 42	2" - 2 1/2" - 3"	130	253	25	14	101	1.00	1.20
ESA 43 / ESB 43	3"	130	330	25	14	101	1.30	1.50
ESA 51 / ESB 51	3 1/2"	180	390	-	4	140	2.80	3.00
ESA 52 / ESB 52	4"	180	440	-	4	140	3.00	3.20