

RV50-22 HIGH PRESSURE

**Relief, Differential Area Poppet
345 bar (5000 psi) BAR Rated**

A screw-in, cartridge-style, direct-acting, differential area, poppet-type hydraulic relief valve for use as a pressure limiting device in more demanding hydraulic circuits requiring low hysteresis and low internal leakage at high working pressures.

Porting	Hydraforce code	Article no.	Spring Options	Price £	Price €
INLINE 1/2" BSP	RV50-22A-4BD-P-50	RV5022A4BD50	34.5 to 344.8 BAR	£201.20	€241.50
with Polyurethane seals					

Materials

Cartridge:

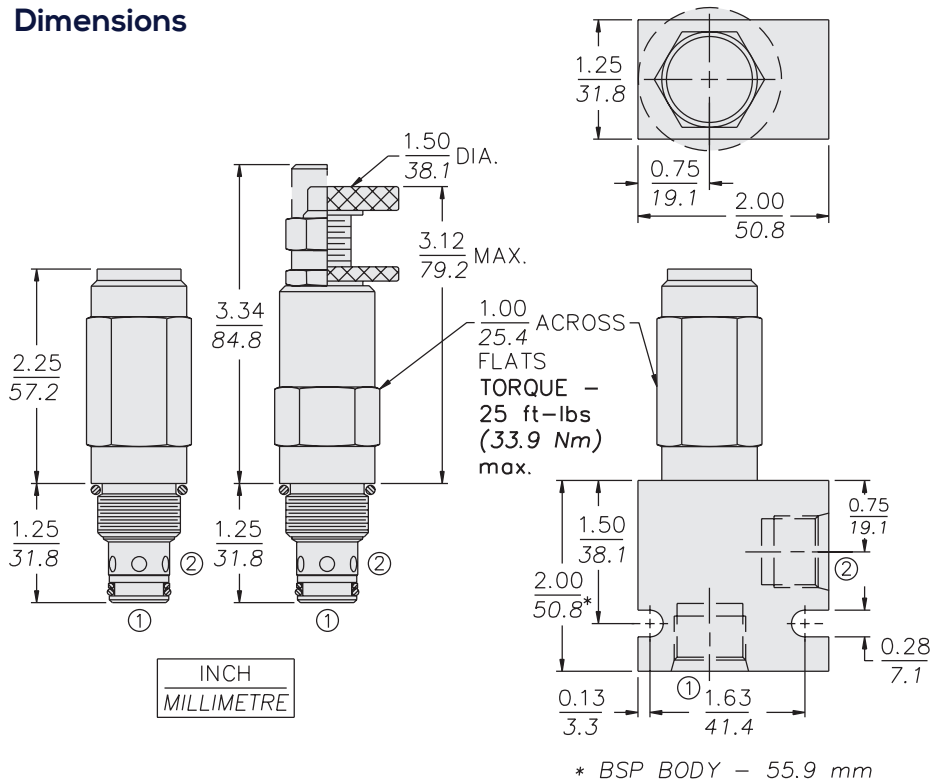
Weight: 0.23 kg. (0.50 lbs.)
Steel with hardened work surfaces.
Zinc-plated exposed surfaces.
Polyurethane seals with
Fluorocarbon back-ups for
pressures over 240 bar (3500 psi).
Anodized aluminum knob.

Standard Ported Body:

Weight: 0.54 kg. (1.2 lbs.)
Ductile Iron (code "D")

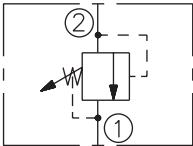
- Standard** - with 1/4" HEX ALLEN HEAD 'A'
- On request** - 1 1/2" dia alum knob 'B'
Option 'A' with cover cap 'C'
Factory Set - Non Adjustable 'F'
Factory Set - Hidden Adjustment 'H'
Lockwire Holes 'L'

Dimensions



Symbols

USASI/ISO:



Performance

