

PV72-35

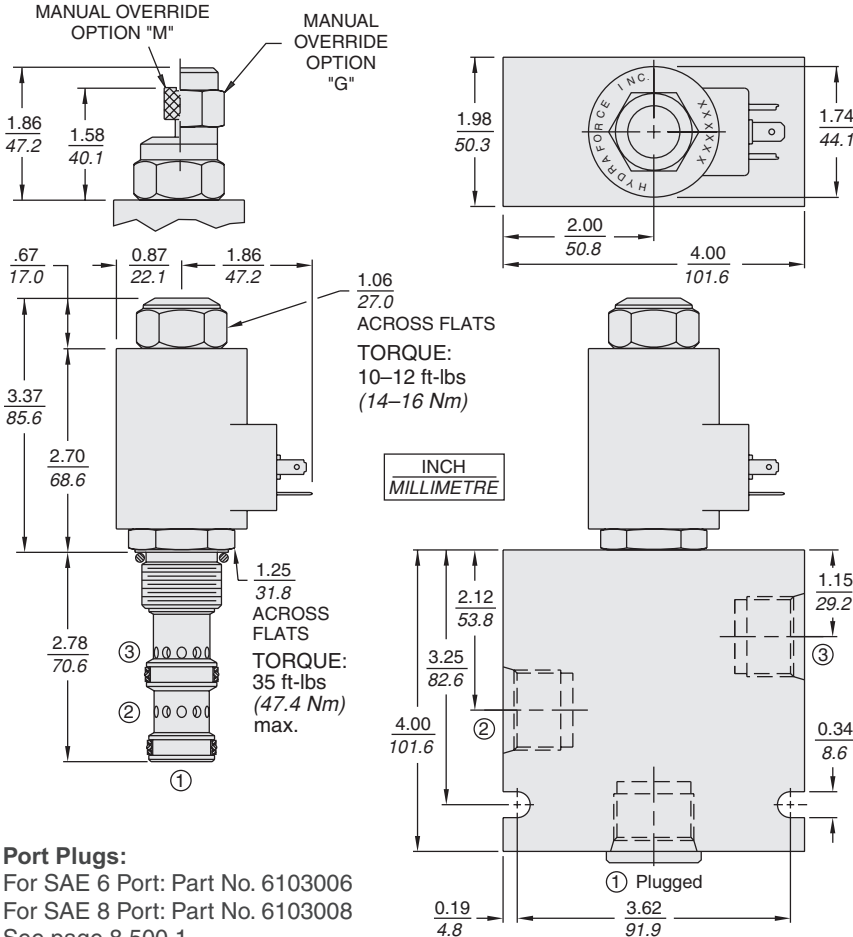
Proportional Flow Control Cartridge, Normally Open 207 BAR Rated

A linear solenoid-driven, two-way normally open, screw-in cartridge valve designed for use with a pressure compensator to function as an electrically stroked variable flow regulator.

Voltage	Hydraforce code	Article no.	Price £	Price €
CARTRIDGE FLOW VERSION A				
24V DC	PV72-35A-0-N-24DG	PV7235AC24	OR	OR
CARTRIDGE FLOW VERSION B				
24V DC	PV72-35B-0-N-24DG	PV7235BC24	OR	OR
INLINE WITH BODY 1/2" BSP FLOW VERSION A				
24V DC	PV72-35A-4B-N-24DG	PV7235A4B24	OR	OR
INLINE WITH BODY 1/2" BSP FLOW VERSION B				
24V DC	PV72-35B-4B-N-24DG	PV7235B4B24	OR	OR
with nitril seals				
WITH 'G' DIN CONNECTOR PLUG				

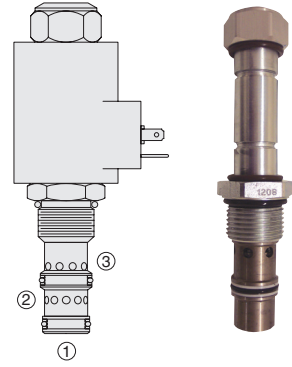
On request - Viton Seals - Screen filter protection - Manual Override
On request - For DC coils with spade or push on connections

Dimensions



Port Plugs:

For SAE 6 Port: Part No. 6103006
For SAE 8 Port: Part No. 6103008
See page 8.500.1



Materials

Cartridge:

Cartridge: Weight: 0.36 kg. (0.80 lbs.)
Steel with hardened work surfaces.
Zinc-plated exposed surfaces.
Buna N O-rings and polyester elastomer back-ups standard.

Standard Ported Body:

Weight: 1.09 kg. (2.4 lbs.)
Anodized highstrength 6061 T6 aluminum alloy, rated to 207 bar (3000 psi). Ductile iron bodies available; dimensions may differ.

70-Size "D" Coil:

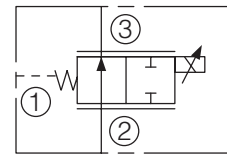
Weight: 0.32 kg. (0.7 lbs.)
Unitized thermoplastic encapsulated, Class H high temperature magnet-wire.

70-Size "E" Coil:

Weight: 0.41 kg. (0.9 lbs.)
Fully encapsulated with rugged external metal shell.
IP69K rated.

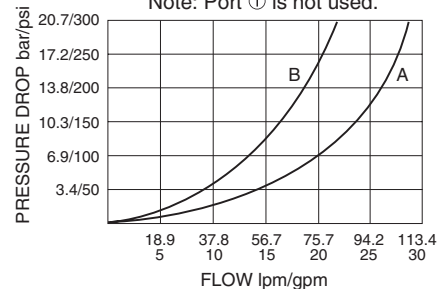
Symbols

USASI/ISO:



Performance

② to ③ Coil De-energized
Through Cartridge & Ported Body
32 cSt/150 ssu oil at 40°C
Note: Port ① is not used.



Please contact our technical sales team for electronic controller options