

Materials

Cartridge:

Weight: 0.36 kg. (0.80 lbs.)
 Steel with hardened work surfaces.
 Zinc-plated exposed surfaces.
 Buna N O-rings and polyester elastomer back-ups standard.

Standard Ported Body:

Weight: 1.09 kg. (2.4 lbs.)
 Anodized highstrength 6061 T6 aluminum alloy, rated to 207 bar (3000 psi).
 Ductile iron bodies available; dimensions may differ.

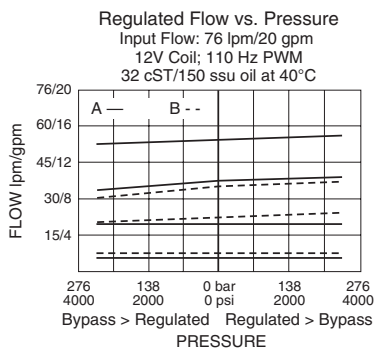
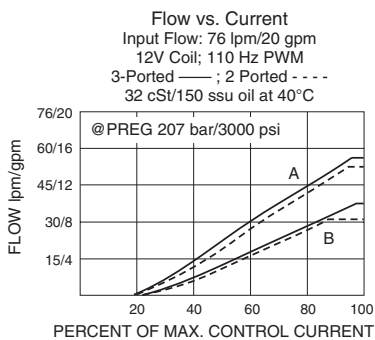
70-Size "D" Coil:

Weight: 0.32 kg. (0.7 lbs.)
 Unitized thermoplastic encapsulated, Class H high temperature magnet-wire.

70-Size "E" Coil:

Weight: 0.41 kg. (0.9 lbs.)
 Fully encapsulated with rugged external metal shell.
 IP69K rated.

Performance



PV72-30

Proportional Flow Control Cartridge, Normally Closed 207 BAR Rated

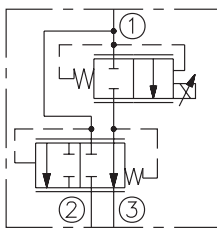
A solenoid-operated, electrically-variable, three-port, pressure-compensated, spooltype, normally closed when de-energized, proportional flow control valve. It can be used as a priority-type flow regulator with pressure-compensated, regulated and bypass flow. It can also be used as a restrictive-type 2-way, pressure-compensated flow regulator when the bypass line (port ②) is blocked.

Voltage	Hydraforce code	Article no.	Price £	Price €
CARTRIDGE FLOW VERSION A				
24V DC	PV72-30A-0-N-24DG	PV7230AC24	£405.10	€486.20
CARTRIDGE FLOW VERSION B				
24V DC	PV72-30B-0-N-24DG	PV7230BC24	£405.10	€486.20
INLINE WITH BODY 1/2" BSP FLOW VERSION A				
24V DC	PV72-30A-4B-N-24DG	PV7230A4B24	£631.80	€758.10
INLINE WITH BODY 1/2" BSP FLOW VERSION B				
24V DC	PV72-30B-4B-N-24DG	PV7230B4B24	£631.80	€758.10
with nitril seals				
WITH 'G' DIN CONNECTOR PLUG				

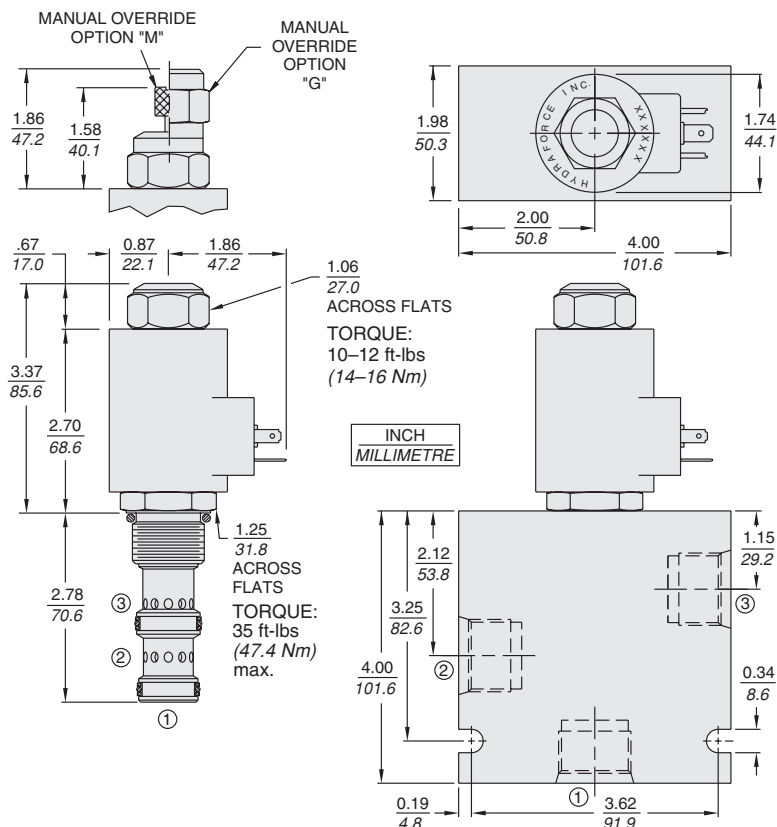
On request - Viton Seals - Screen filter protection - Manual Override
 On request - For DC coils with spade or push on connections

Symbols

USASI/ISO:



Dimensions



Please contact our technical sales team for electronic controller options