

PV72-20

Proportional Flow Control Cartridge, Normally Closed 207 BAR Rated

A solenoid-operated, electrically-variable, two-port, pressure-compensated, spooltype, normally closed when de-energized, proportional flow control valve.

Voltage	Hydraforce code	Article no.	Price £	Price €
CARTRIDGE VERSION				
24V DC	PV72-20-0-N-24DG	PV7220C24	£381.90	€458.30
INLINE WITH BODY SAE10				
24V DC	PV72-20-10T-N-24DG	PV722010T24	ON REQUEST	
INLINE WITH BODY SAE12				
24V DC	PV72-20-12T-N-24DG	PV722012T24	ON REQUEST	
INLINE WITH BODY SAE16				
24V DC	PV72-20-16T-N-24DG	PV722016T24	ON REQUEST	
with nitril seals				
WITH 'G' DIN CONNECTOR PLUG				

Materials

Cartridge:

Weight: 0.32 kg. (0.7 lbs.)
Steel with hardened work surfaces.
Zinc-plated exposed surfaces.
Buna N O-rings and polyester elastomer back-ups standard.

Standard Ported Body:

Weight: 0.59 kg. (1.3 lbs.)
Anodized highstrength 6061 T6 aluminum alloy, rated to 207 bar (3000 psi).
Ductile iron bodies available; dimensions may differ.

70-Size "D" Coil:

Weight: 0.32 kg. (0.7 lbs.)
Unitized thermoplastic encapsulated.

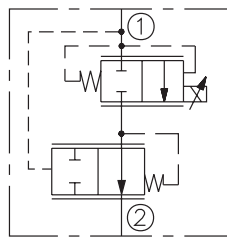
70-Size "E" Coil:

Weight: 0.41 kg. (0.9 lbs.)
Fully encapsulated with rugged external metal shell.
IP69K rated.

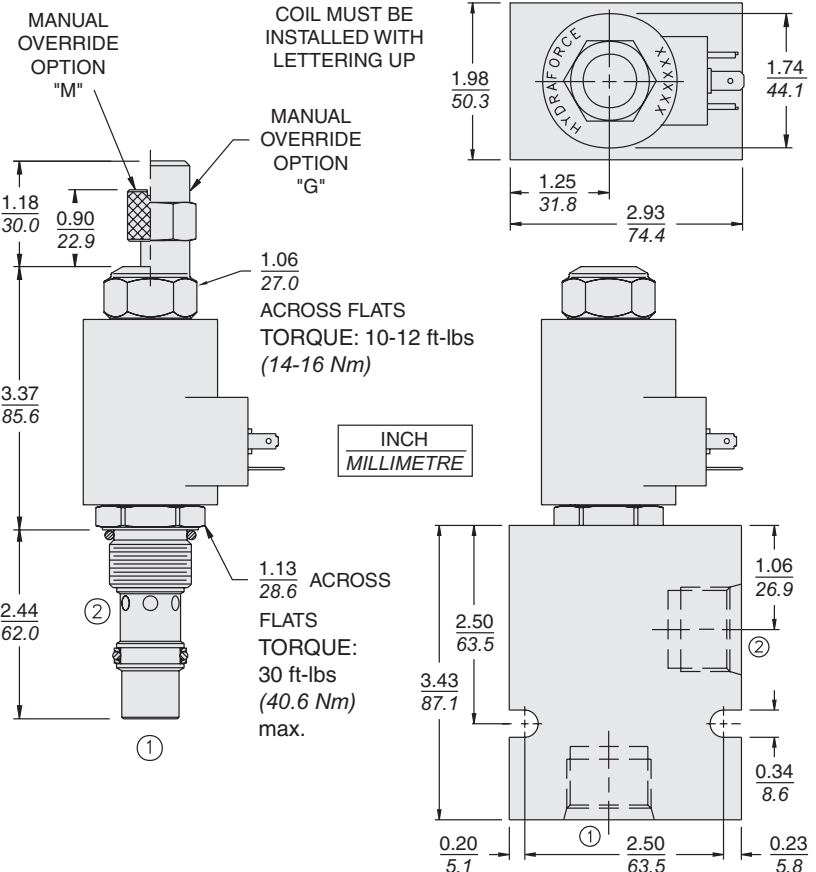
On request - Viton Seals - Screen filter protection - Manual Override
On request - For DC coils with spade or push on connections

Symbols

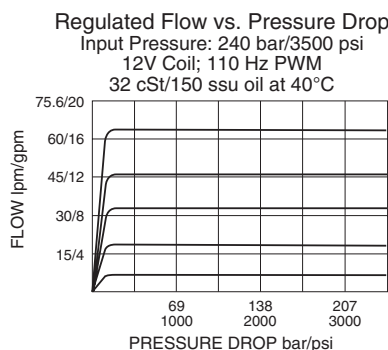
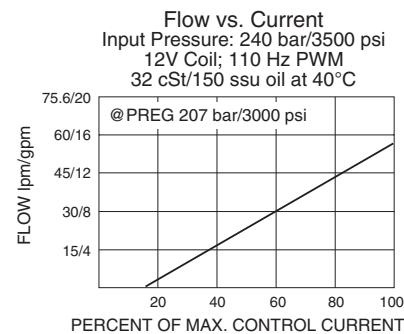
USASI/ISO:



Dimensions



Performance



Please contact our technical sales team for electronic controller options