

# PR50-36 HIGH PRESSURE

Pressure Reducing/Relieving, Pilot-Operated  
345 bar (5000 psi) BAR Rated

A screw-in, cartridge-style, pilot-operated, spool-type, hydraulic pressure reducing/relieving valve with internal pilot and internal spring chamber drain, designed to act as a pressure-regulating device for secondary circuits.

Porting	Hydraforce code	Article no.	Spring Options	Price £	Price €
INLINE SAE 6	PR50-36A-6TD-P-50	PR5036A6TD50	206.9 to 344.8 BAR	<b>£253.30</b>	<b>€304.00</b>

**with Polyurethane seals**

## Materials

### Cartridge:

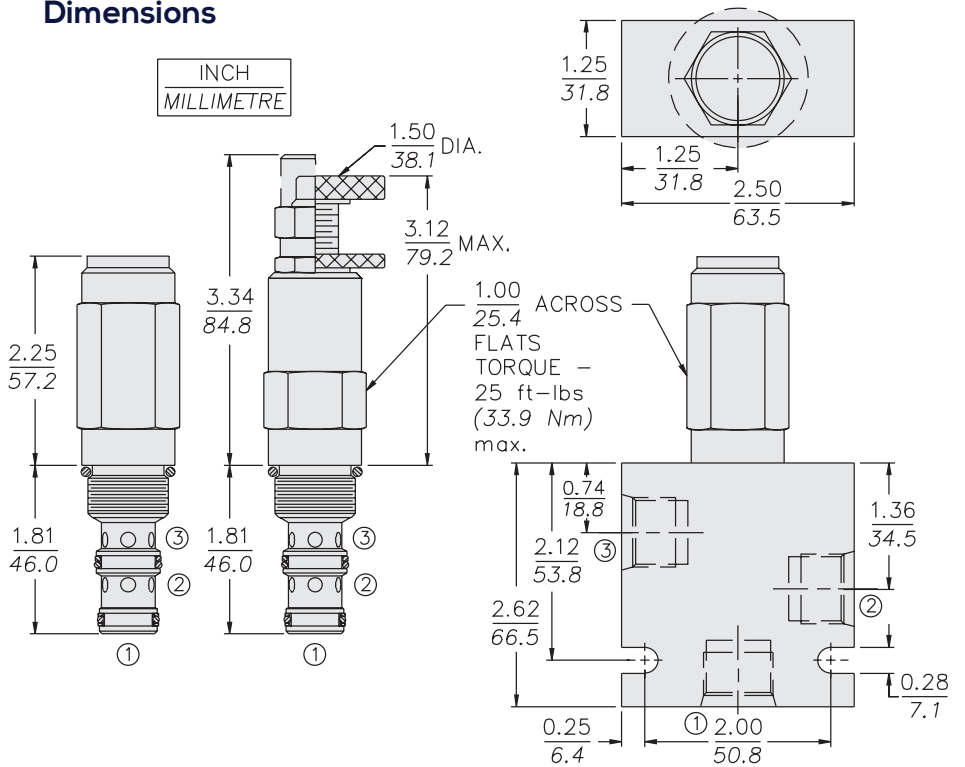
Weight: 0.27 kg. (0.60 lbs.)  
Steel with hardened work surfaces.  
Zinc-plated exposed surfaces.  
Polyurethane O-rings and  
Fluorocarbon back-ups standard.  
Anodized aluminum knobs  
and caps.

### Standard Ported Body:

Weight: 0.64 kg. (1.41 lbs.)  
Ductile Iron (code "D")

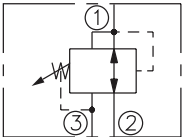
- Standard** - with 1/4" HEX ALLEN HEAD 'A'  
**On request** - 1 1/2" dia alum knob 'B'  
Option 'A' with cover cap 'C'  
Factory Set - Non Adjustable 'F'  
Factory Set - Hidden Adjustment 'H'  
Lockwire Holes 'L'

## Dimensions



## Symbols

### USASI/ISO:



## Performance

