

PR10-32

Pressure Reducing/Relieving, 207 BAR Rated

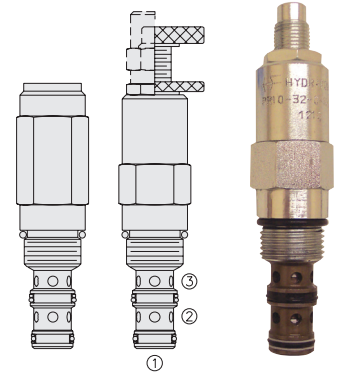
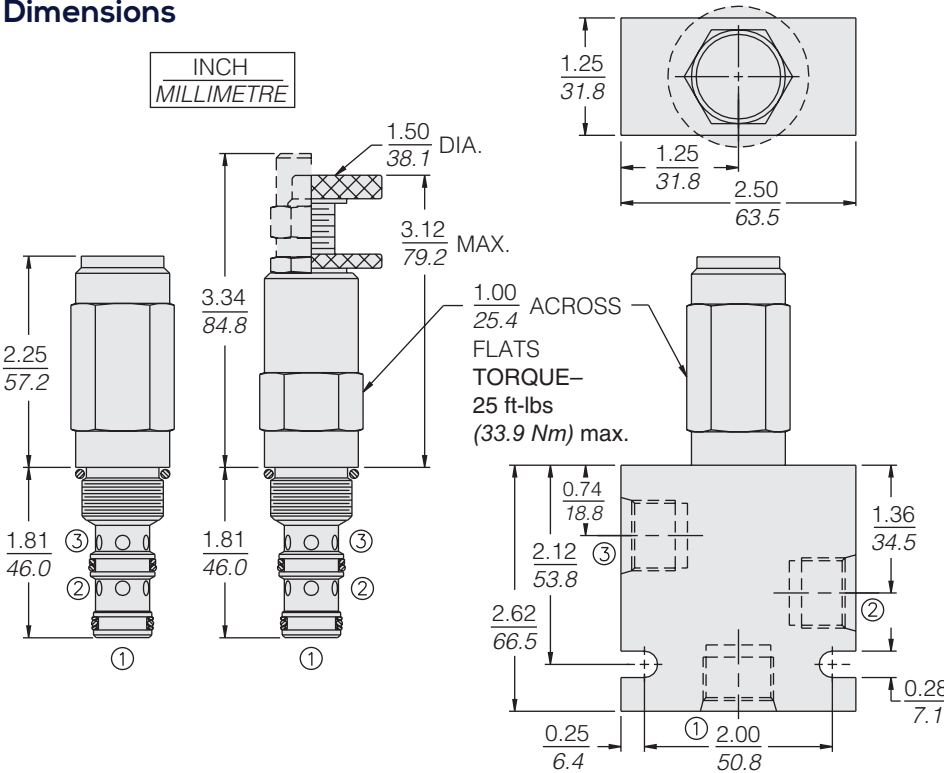
A screw-in, cartridge-style, direct-acting, spool-type, hydraulic pressure reducing/relieving valve with internal pilot and internal spring chamber drain, designed to act as a pressure-regulating device for secondary circuits. It is intended for use in stable input flow circuits.

| Porting | Hydraforce code | Article no. | Spring Options | Price £ | Price € |
|-------------------|-----------------|-------------|--|---------|---------|
| Cartridge Version | PR10-32A-0-N* | PR1032AC* | * suffix with | £100.20 | €120.20 |
| INLINE 1/4" BSP | PR10-32A-2B-N* | PR1032A2B* | 3 = 3.4 TO 20.7 BAR 6 = 10.4 TO 41.4 BAR 12 = 20.7 TO 82.8 BAR | £189.00 | €226.80 |
| INLINE 3/8" BSP | PR10-32A-3B-N* | PR1032A3B* | 22 = 34.5 TO 151 BAR | £182.40 | €218.90 |

with nitril seals / Viton on request

- Standard** - with 1/4" HEX ALLEN HEAD 'A'
- On request** - 1 1/2" dia alum knob 'B'
- Option 'A' with cover cap 'C'
 - Factory Set - Non Adjustable 'F'
 - Factory Set - Hidden Adjustment 'H'
 - Lockwire Holes 'L'

Dimensions



Materials

Cartridge:

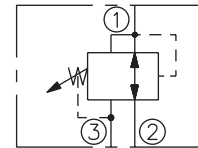
Weight: 0.27 kg. (0.60 lbs.)
Steel with hardened work surfaces.
Zinc-plated exposed surfaces.
Buna N O-rings and polyester elastomer back-ups standard.
Anodized aluminum knobs and caps.

Standard Ported Body:

Weight: 0.36 kg. (0.80 lbs.)
Anodized high-strength 6061 T6 aluminum alloy, rated to 240 bar (3500 psi).
Ductile iron bodies available; dimensions may differ.

Symbols

USASI/ISO:



Performance

