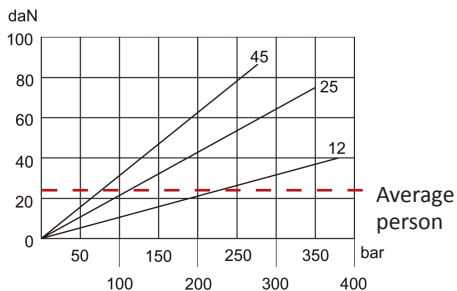


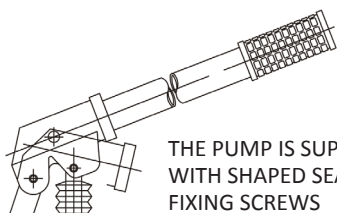
PMI LEVER OPERATED HAND PUMP

Double pumping for double acting cylinder - Closed center

Article no.	Displacement	Optimal Pressure	Max Pressure	Price £	Price €
PMI6	6 cm ³	420 BAR	500	£236.30	€243.50
PMI12	12 cm ³	220 BAR	380	£240.00	€247.30
PMI25	25 cm ³	120 BAR	350	£240.00	€247.30
PMI45	45 cm ³	80 BAR	280	£247.50	€255.00
Rubber Protection				£12.50	€12.90
Relief Valve Option				£21.30	€22.00



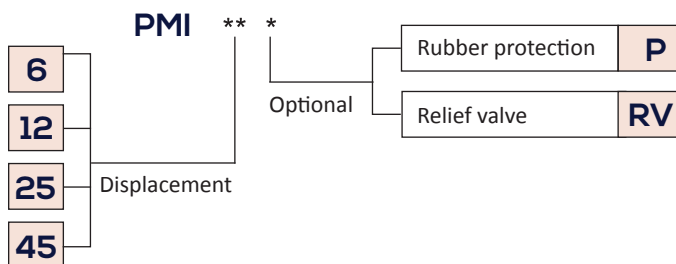
Effort (daN) operating on the end of the lever. Average person will generate 25 daN force.



THE PUMP IS SUPPLIED WITH SHAPED SEAL, FIXING SCREWS AND ACTING LEVER
Lever = 600mm

Price is without tank - order tanks separately

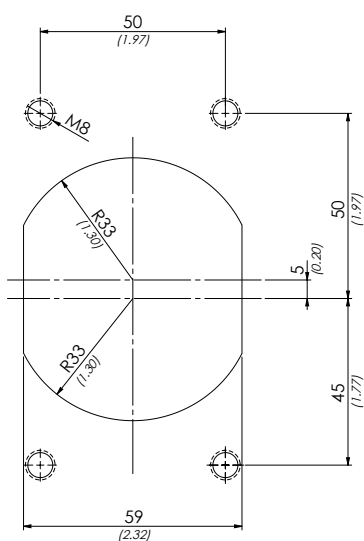
Ordering Code



Technical data

Mineral oil	ISO 6743/4 (DIN 51524)
Oil viscosity	15-250 mm ² /s (15 to 250 cSt)
Max contamination index	ISO 4406:1999 Classe 19/17/14
Oil temperature	-20°C +80°C -4°F + 176°F
Ambient temperature	-20°C +50°C -4°F + 122°F
Weight	4.2kg
It is necessary a filter is used to protect the valve (advised filtration 15 µm)	

Dimensions



	A	B	C
PMI6	253 (9.96)	166 (6.54)	34 (1.34)
PMI12	253 (9.96)	166 (6.54)	34 (1.34)
PMI25	273 (10.74)	172 (6.77)	34 (1.34)
PMI45	283 (11.14)	172 (6.77)	40 (1.57)

