

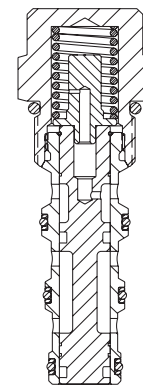
# PD10-45

Piloted 2-Way Spool  
207 BAR Rated

A screw-in, cartridge-style, pilot-operated, spool-type, hydraulic directional valve for two-way circuits requiring remote pilot actuation and

Porting	Hydraforce code	Article no.	Bias Spring Options	Price £	Price €
Cartridge Version	PD10-45-0-N*	PD10450C*	* suffix with 60 = 4.1 BAR (60 PSI)	£85.70	€102.90
INLINE 1/4" BSP	PD10-45-2B-N*	PD10452B*	110 = 7.6 BAR (110 PSI)	£175.90	€211.10
INLINE 3/8" BSP	PD10-45-3B-N*	PD10453B*	170 = 11.7 BAR (170 PSI)	£169.70	€203.70

with nitril seals / Viton on request



DIRECTIONAL VALVES  
HYDRAFORCE

## Materials

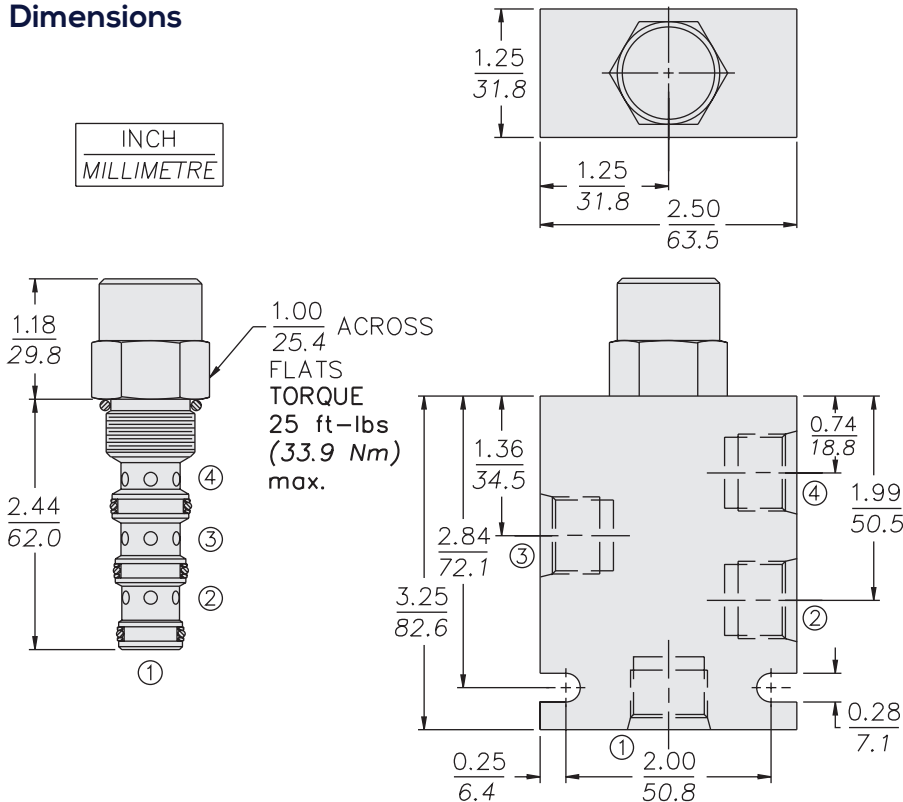
### Cartridge:

Weight: 0.16 kg. (0.35 lbs.)  
Steel with hardened work surfaces.  
Zinc-plated exposed surfaces.  
Buna N O-rings and polyester elastomer back-ups standard.

### Standard Ported Body:

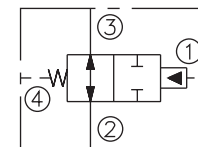
Weight: 0.34 kg. (0.75 lbs.)  
Anodized highstrength 6061 T6 aluminum alloy, rated to 207 bar (3000 psi).  
Ductile iron bodies available; dimensions may differ.

## Dimensions

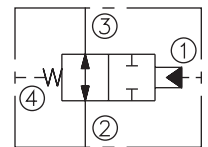


## Symbols

### USASI:



### ISO:



## Performance

