

IP67 INDUCTIVE PROXIMITY SWITCH

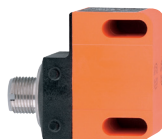
- Valve position feedback sensor for 24v DC operation
- 2 off 3 wire outputs (common supply)
- with 4 pin M12 connector
- inductive sensor included (555602)
- target puck included (555422)

Article no.	Price £	Price €
IPSFIT	£283.50	€340.10
Optional 2mtr cable with M12 connector		
ECV001	£17.70	€21.20



IN5327 INDUCTIVE SENSOR

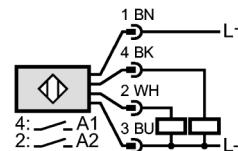
- Rectangular, plastics
- Connector
- Sensing range 4 mm; [nf] non-flush mountable



Electrical connection

Connection - M12 connector; Gold-plated contacts

Wiring



Electrical data

Electrical design	DC PNP
Operating voltage [V]	10...36 DC
Current consumption [mA]	< 15 (24 V)
Protection class	II
Reverse polarity protection	yes

Outputs

Output function	2 x normally open
Voltage drop [V]	< 2.5
Current rating [mA]	250
Short-circuit protection	pulsed
Overload protection	yes
Switching frequency [Hz]	1300

Range

Sensing range [mm]	4
Real sensing range (Sr) [mm]	4 ± 10 %
Operating distance [mm]	0...3.25

Accuracy / deviations

Correction factors	mild steel = 1 / stainless steel approx. 0.7 / brass approx. 0.4 / Al approx. 0.3 / Cu approx. 0.2
Hysteresis [% of Sr]	1...15
Switch-point drift [% of Sr]	-10...10

Environment

Ambient temperature [°C]	-25...80
Protection	IP 67

Tests / approvals

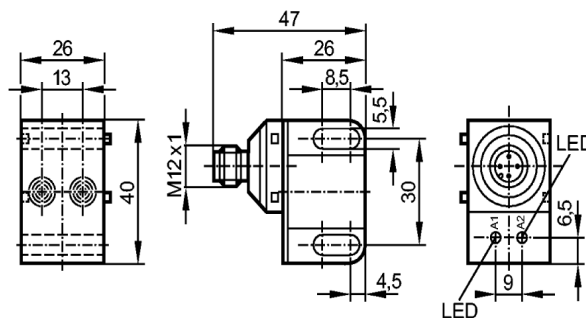
EMC	EN 60947-5-2
	EN 55011: class B
MTTF [Years]	1089

Mechanical data

Mounting	non-flush mountable
Housing materials	housing: PBT; connector housing: stainless steel
Weight [kg]	0.056

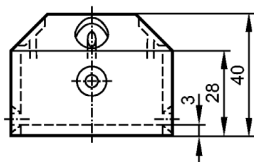
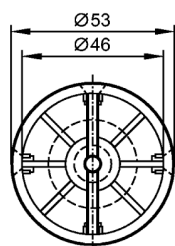
Displays / operating elements

Output status indication	LED 2 x yellow
--------------------------	----------------



E17320 TARGET PUCK

- Ø 53 mm
- 3 possible switching flag positions



Mechanical data

Shaft height [mm]	20
Hole spacing [mm]	80
Design	for mechanical interfaces to ISO 5211 (DIN 3337) on pneumatic actuators or manually-operated valves
Housing materials	Target puck: PA 6 black; screws: V2A (1.4302)
Weight [kg]	0.044

Components

- 1 socket head screw M 6 x 16 with plain washer
- 2 countersunk head screws M 5
- 2 direction indicators yellow
- 2 direction indicators black
- 1 cover yellow
- 1 cover plug black