

HYDRO DRY WATER REMOVAL ELEMENTS

The hydro-dry filter elements remove up to 80% of the free water present in the oil.

The hydro-dry elements use the WR filter media, working by absorption and ensuring a high water retention capacity.

To get the maximum water removal efficiency the hydro-dry elements must be used at constant flow rate and low and constant pressure, i.e. the ideal use is in a off-line filter or in a filtration trolley.

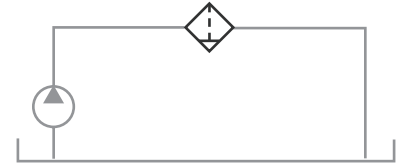
The hydro-dry elements remove also the solid contamination ($\beta_{21}(c) > 1.000$), but we recommend that the main part of solid contamination is removed upstream by a dedicated return filter.

The hydro-dry elements are available in standard dimensions, to fit standard filter housings.

A clogging indicator set at 130 kPa (1,3 bar) on the filter housing is recommended for proper replacement of the clogged element.



OFF-LINE FILTERS



SYSTEM CARE

Hydro-dry elements ERD series

Fit the RD series filter housings

Hydro-dry elements ERF series

Fit the OF series filter housings and the UOW filtration unit

Article No.	H2O retention capacity (ml)		Recommended max flow rate (l/min)	A	B	C	Price £	Price €
	with oil 30 cSt	with oil 98 cSt						
ERD31NWR	60	45	8	70	34	130	ON REQUEST	
ERD41NWR	240	170	20	99	51	211	ON REQUEST	
ERD51NWR	500	350	35	130	74	251	ON REQUEST	
ERD61NWR	1000	750	90	130	74/85	500	ON REQUEST	
ERD24NWR	600	440	60	72	106	465	ON REQUEST	
ERD34NWR	800	580	80	92	126	480	ON REQUEST	