

### Materials

#### Cartridge:

Weight: 0.30 kg. (0.68 lbs.)  
 Steel with hardened work surfaces.  
 Zinc-plated exposed surfaces.  
 Buna N O-rings and polyester elastomer back-ups standard.

#### Standard Ported Body:

Weight: 0.36 kg. (0.80 lbs.)  
 Anodized highstrength 6061 T6 aluminum alloy, rated to 207 bar (3000 psi).  
 Ductile iron bodies available; dimensions may differ.

# FR10-39

## Flow Regulator, Pressure Compensated 207 BAR Rated

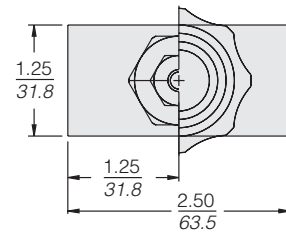
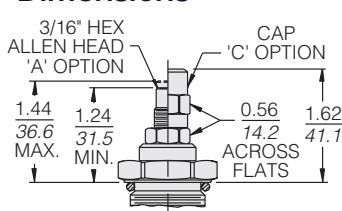
A screw-in, cartridge-style, adjustable orifice, pressure-compensated, manually operated, bypass-type hydraulic flow regulating valve. It can be used as a priority-type flow regulator or a restrictive-type 2-way flow regulator when the bypass port (port ②) is blocked.

Porting	Hydraforce code	Article no.	Price £	Price €
Cartridge Version	FR10-39A-0-N	<b>FR1039AC</b>	<b>£124.30</b>	<b>€149.10</b>
INLINE 1/4" BSP	FR10-39A-2B-N	<b>FR1039A2B</b>	<b>£213.10</b>	<b>€255.70</b>
INLINE 3/8" BSP	FR10-39A-3B-N	<b>FR1039A3B</b>	<b>£213.10</b>	<b>€255.70</b>

**with nitril seals / Viton on request**

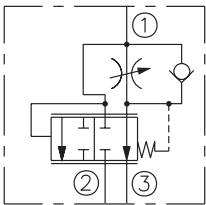
- Standard** - with 3/16" HEX ALLEN HEAD (A)  
**On request** - Option (A) with cover cap (C)  
 Top plastic knob

### Dimensions

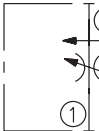


### Symbols

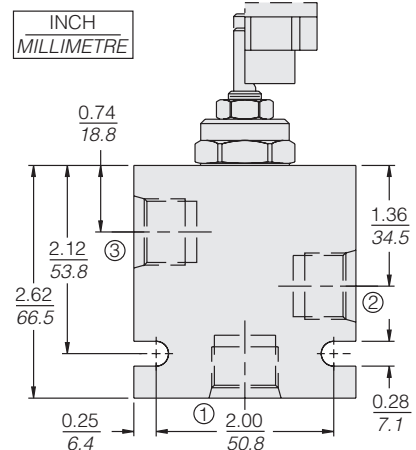
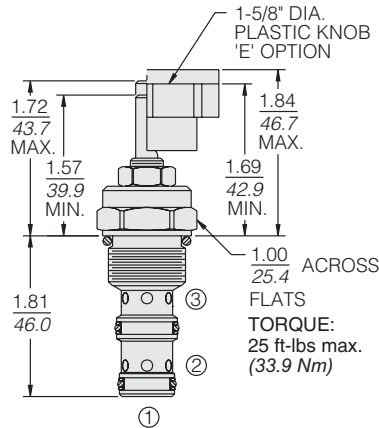
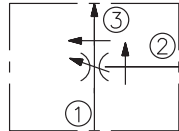
#### USASI/ISO:



#### 2-Ported:



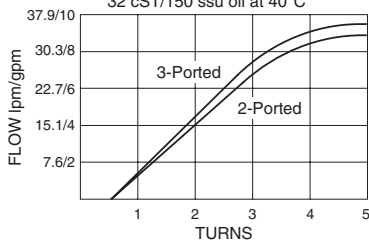
#### 3-Ported:



### Performance

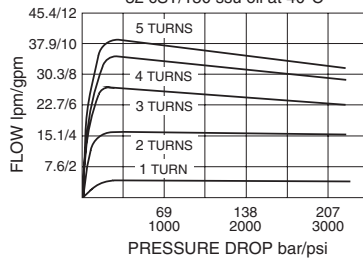
#### Regulated Flow vs. Turns

103 bar/1500 psi at Port ③  
 2-Ported: at 123 bar/1800 psi inlet pressure  
 3-Ported: at 38 lpm/10 gpm inlet flow  
 32 cST/150 ssu oil at 40°C



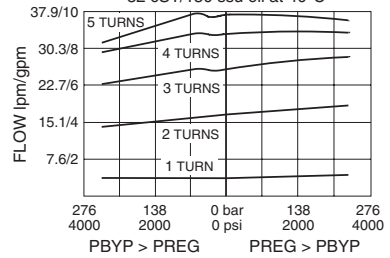
#### 2-Ported Regulated Flow vs. Pressure Drop

at 240 bar/3500 psi Inlet  
 32 cST/150 ssu oil at 40°C



#### 3-Ported Regulated Flow vs. Load

at 38 lpm/10 gpm Inlet  
 32 cST/150 ssu oil at 40°C



#### Pressure Drop vs. Reverse Flow from ③ to ①

34.5 bar/500 psi Inlet Pressure  
 32 cST/150 ssu oil at 40°C

