

EC16-40

Pressure Compensator 207 BAR Rated

A screw-in, cartridge-style pressure-compensating element, intended for use with a remote fixed or variable orifice to yield a three-port (bypass-type), pressurecompensated, flow regulating hydraulic valve.

Operation

The EC16-40 maintains a constant flow rate from ③ regardless of load pressure changes in the circuit downstream of ③.

The cartridge maintains a constant differential pressure from circuit point P to port ③, thereby regulating the hydraulic flow rate between the two points in the circuit. The EC16-40 is a priority type regulator, delivering pump flow first to ③, then bypassing excess to ②. All ports may be fully pressurised.

Materials

Cartridge:

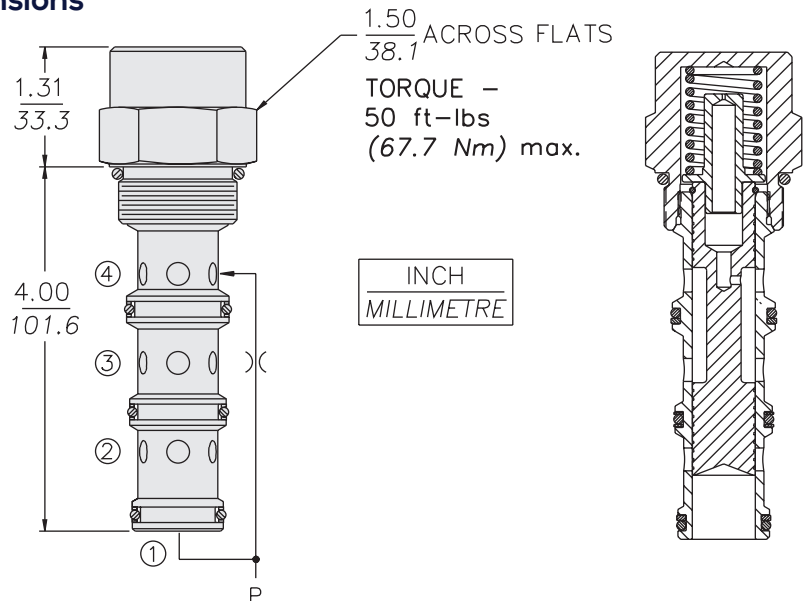
Weight: 0.36 kg. (0.80 lbs.)
Steel with hardened work surfaces.
Zinc-plated exposed surfaces.
Buna N O-rings and polyester elastomer back-ups standard.

Ported Body:

Not available.

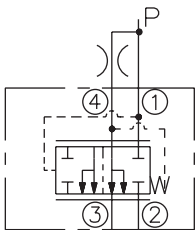
Porting	Hydraforce code	Article no.	Spring Options	Price £	Price €
Cartridge Version	EC16-40-0-N-*	EC16400C*	* suffix with 100 = 6.9 BAR (100 PSI) 160 = 11 BAR (160 PSI)	£156.20	€187.40
with nitril seals / Viton on request					

Dimensions



Symbols

USASI/ISO:



Performance

Output Flow vs. Orifice Dia.
with 80 psid Spring
32 cSt/150 ssu oil at 40°C

