

# EC10-30

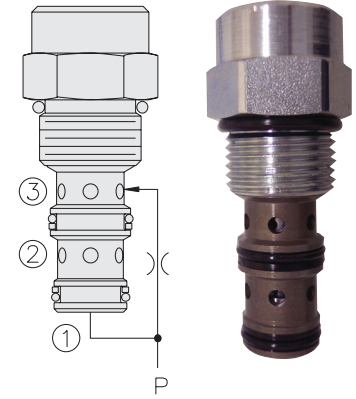
## Pressure Compensator 207 BAR Rated

A screw-in, cartridge-style pressure-compensating element, intended for use with a remote fixed or variable orifice to yield a two-port-type, pressure-compensated, flow regulating hydraulic valve.

### Operation

The EC10-30 maintains a constant flow rate from ② regardless of load pressure changes in the circuit downstream of ②.

The cartridge maintains a constant differential pressure from circuit point P to port ③, thereby regulating the hydraulic flow rate between the two points in the circuit.



Porting	Hydraforce code	Article no.	Spring Options	Price £	Price €
Cartridge Version	EC10-30-0-N-*	EC10300C*		<b>£70.40</b>	<b>€84.50</b>
			* suffix with		
INLINE 1/4"BSP	EC10-30-2B-N*	EC10302B*	40 = 2.8 BAR (40 PSI) 80 = 5.52 BAR (80 PSI)	<b>£159.20</b>	<b>€191.10</b>
INLINE 3/8"BSP	EC10-30-3B-N*	EC10303B*	160 = 11 BAR (160 PSI)	<b>£152.70</b>	<b>€183.20</b>

with nitril seals / Viton on request

### Materials

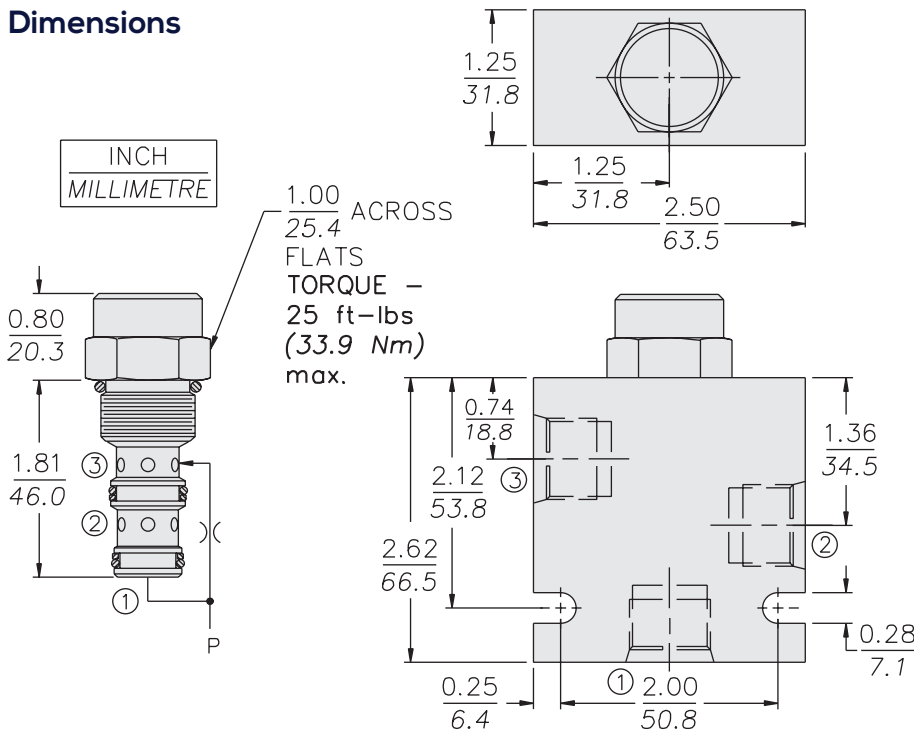
#### Cartridge:

Weight: 0.11 kg. (0.25 lbs.)  
Steel with hardened work surfaces.  
Zinc-plated exposed surfaces.  
Buna N O-rings and polyester elastomer back-ups standard.

#### Standard Ported Body:

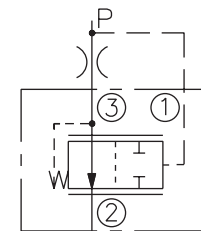
Weight: 0.36 kg. (0.80 lbs.)  
Anodized highstrength  
6061 T6 aluminum alloy,  
rated to 207 bar (3000 psi).  
Ductile iron bodies available;  
dimensions may differ.

### Dimensions

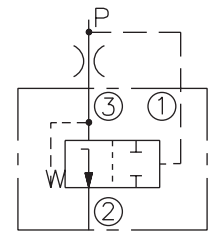


### Symbols

#### USASI:



#### ISO:



### Performance

Output Flow vs. Orifice Dia.  
with 80 psid Spring  
32 cSt/150 ssu oil at 40°C

