

# CR08-38

## Bi-Directional Relief Valve, 207 BAR Rated

A screw-in, cartridge-style, direct-acting, differential area, poppet-type, bi-directional relief valve, intended for use as a pressure limiting device in demanding hydraulic circuits.

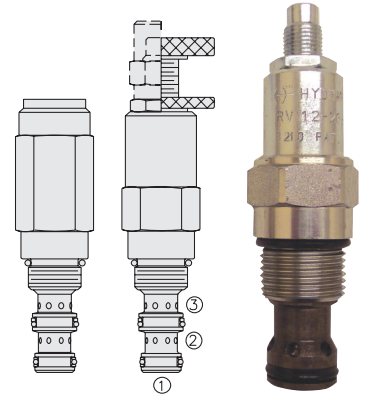
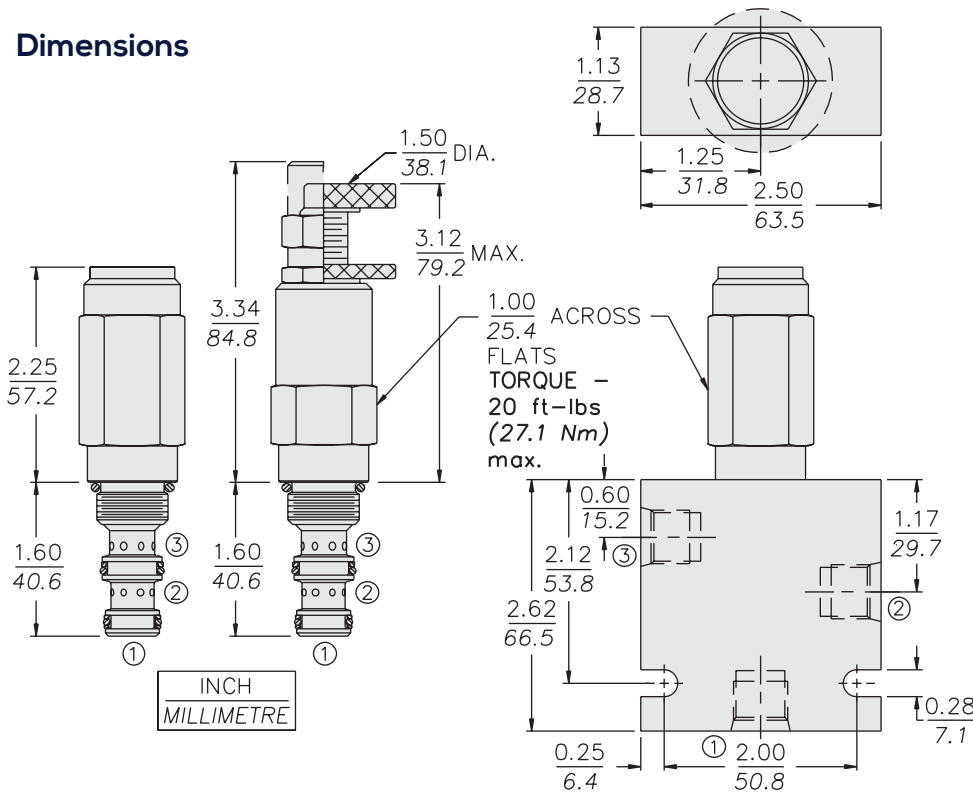
Note: Orifice Disc should not be used with this valve.

Porting	Hydraforce code	Article no.	Spring Options	Price £	Price €
Cartridge Version	CR08-38A-0-N30	CR0838AC30		£116.80	€140.20
INLINE 1/4" BSP	CR08-38A-2B-N30	CR0838A2B30	* suffix with 30 = 68 TO 205 BAR	£192.90	€231.50
INLINE 3/8" BSP	CR08-38A-3B-N30	CR0838A3B30		£189.40	€227.30

with nitril seals / Viton on request

- Standard** - with 1/4" HEX ALLEN HEAD 'A'
- On request** - 1 1/2" dia alum knob 'B'  
 Option 'A' with cover cap 'C'  
 Factory Set - Non Adjustable 'F'  
 Factory Set - Hidden Adjustment 'H'  
 Lockwire Holes 'L'

### Dimensions



### Materials

#### Cartridge:

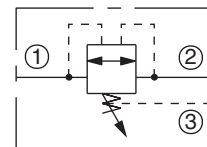
Weight: 0.14 kg. (0.30 lbs.)  
 Steel with hardened work surfaces.  
 Zinc-plated exposed surfaces.  
 Buna N O-rings and TFE back-ups standard. Anodized aluminum knob.

#### Standard Ported Body:

Weight: 0.27 kg. (0.60 lbs.)  
 Anodized highstrength 6061 T6 aluminum alloy, rated to 207 bar (3000 psi).  
 Ductile iron bodies available; dimensions may differ.

### Symbols

#### USASI/ISO:



### Performance

