

Y Strainers



THREADED Y STRAINERS

45

FLANGED Y STRAINERS

47

■ THREADED VALVES can be manufactured according to the following standards:

ANSI - ASME B1.20.1 - NPT
GAS UNI - ISO228
ISO7/1 RC - RP THREADS

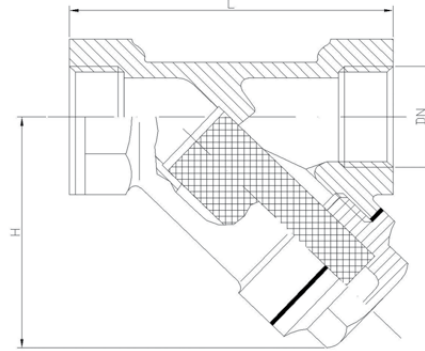
■ FLANGED VALVES can be manufactured according to the following standards:

PN16
PN20
B16.24 ASA 150

FIL54116

BRASS Y STRAINER PN20-16 SCREWED ENDS

PN20-16/B 125-100WSP 250-200WOG



STANDARD MATERIALS

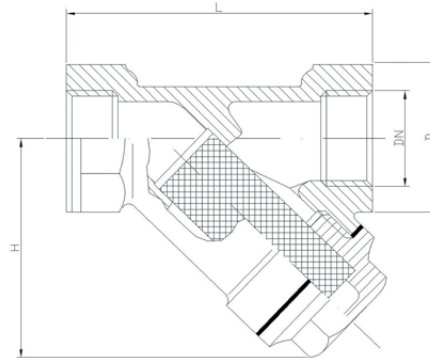
Body	BRASS-CW617N UNI EN12165
Cap	BRASS-CW617N UNI EN12165
Screen	STAINLESS STEEL

	1-4"	3-8"	1-2"	3-4"	1"	1"1-4	1"1-2	2"	2"1-2	3"
PN	20	20	20	20	20	20	20	20	16	16
L (mm)	55	55	58	70	87	96	106	126	145	165
H (mm)	40	40	40	50	60	68	75	90	100	118
Holes pitch (mm)	1,5	1,5	1,5	1,5	1,5	2	2	2	2,5	2,5
Inscribed hole diam.micron	400	400	400	400	400	500	500	500	600	600
Holes per cm ²	150	150	150	150	150	80	80	80	53	53
Holes percentage on total surface	38%	38%	38%	38%	38%	48%	48%	48%	50%	50%

FIL54156

BRONZE Y STRAINER PN16 SCREWED ENDS

PN16/B 100WSP 200WOG



STANDARD MATERIALS

Body	BRONZE-CC491K UNI EN 1982
Cap	BRASS-CW617N UNI EN12165
Screen	STAINLESS STEEL

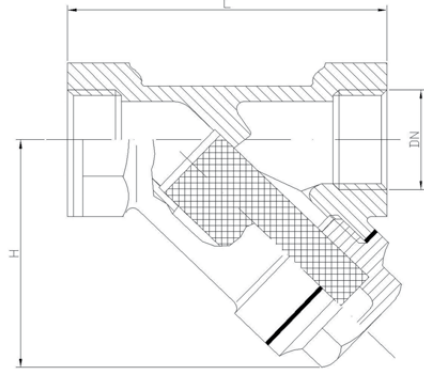
	3-8"	1-2"	3-4"	1"	1"1-4	1"1-2	2"	2"1-2	3"	4"
L (mm)	55	58	69	82	98	109	131	151	172	219
H (mm)	40	44	47	56	68	78	98	114	129	170
D (mm)	26	29	37	42	54	61	74	93	113	145
Holes Dimension	0,4	0,8	0,8	0,8	0,8	0,8	0,8	0,53	0,53	0,53
MESH	45	23	23	23	23	23	23	32	32	32
WEIGHT (Kg)	0,22	0,225	0,322	0,447	0,739	0,917	1,6	2,4	4,6	7,2



FIL54157

BRONZE Y STRAINER PN20-16 SCREWED ENDS

PN20-16/B 125-100WSP 250-200WOG



	STANDARD MATERIALS
Body	BRONZE-CC491K UNI EN 1982
Cap	BRASS-CW617N UNI EN12165
Screen	STAINLESS STEEL

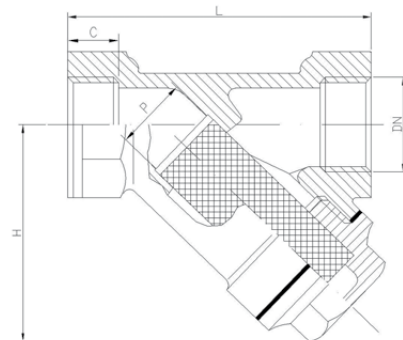
	3-8"	1-2"	3-4"	1"	1"1-4	1"1-2	2"	2"1-2	3"	4"
L (mm)	55	58	70	87	96	106	126	145	165	215
H (mm)	40	40	50	60	68	75	90	100	118	170
Holes per cm ²	150	150	150	150	80	80	80	53	53	53
Holes Dimension	0,4	0,4	0,4	0,4	0,5	0,5	0,5	0,6	0,6	0,6
MESH	45	45	45	45	40	40	40	30	30	30
PN	20	20	20	20	20	20	20	16	16	16
WEIGHT (Kg)	0,19	0,24	0,35	0,48	0,8	0,94	1,5	2,35	3,7	6,65



FIL54158

BRONZE Y STRAINER PN16 SCREWED ENDS

PN16/B 100WSP 200WOG



	STANDARD MATERIALS
Body	BRASS-CW617 UNI EN12165
Strainer	BRASS-CW614 UNI EN12164
Disc	NBR
Seat	INTEGRAL SEAT

	3-8"	1-2"	3-4"	1"	1"1-4	1"1-2	2"	2"1-2	3"	4"
L (mm)	55	62	83	92	105	115	147	169	172	226
H (mm)	42	42	45	53	65	73	92	105	128	178
C (mm)	9	12	14	15	16	18	19	19,5	20	22
P (mm)	16	16	20	24	29	37	48	62	68	92
WEIGHT (Kg)	0,25	0,3	0,356	0,48	0,72	0,9	1,6	2,5	3,7	6,8
MESH	50	50	50	50	40	40	40	18	18	18

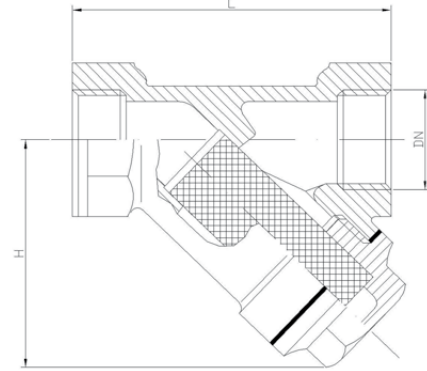
54217

BRONZE Y STRAINER PN25-32 SCREWED ENDS

PN25/B-32/B 150-200WSP 300-400WOG

52220

PN32/B 200WSP 400WOG
WITH PLUG



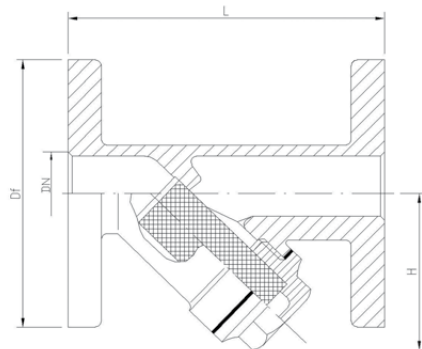
STANDARD MATERIALS	
Body	BRONZE-CC491K UNI EN 1982
Cap	BRONZE-CC491K UNI EN 1982
Screen	STAINLESS STEEL

	3-8"	1-2"	3-4"	1"	1"1-4	1"1-2	2"	2"1-2	3"	4"
H (mm)	41	46	59	66	75	88	107	120	151	200
H1 (mm)	55	63	80	90	104	121	148	172	212	275
L (mm)	55	72	80	91	108	123	148	189	226	270
Hole dimension	0,4	0,4	0,4	0,4	0,47	0,47	0,47	0,53	0,53	0,53
Holes x cm ²	262	262	262	262	168	168	168	133	133	133
MESH	45	45	45	45	36	36	36	32	32	32
WEIGHT (Kg)	0,26	0,36	0,66	0,83	1,13	1,65	2,6	4,43	7,34	12
PN	PN32	PN32	PN32	PN32	PN32	PN32	PN32	PN25	PN25	PN25

54517

BRONZE Y STRAINER PN16 FLANGED ENDS

PN16/B 100WSP 200WOG



STANDARD MATERIALS	
Body	BRONZE-CC491K UNI EN 1982
Cap	BRONZE-CC491K UNI EN 1982
Screen	STAINLESS STEEL

	010	015	020	025	032	040	050	065	080	100
Df (PN16)	90	95	105	115	140	150	165	185	200	220
H (mm)	41	46	59	66	75	88	107	120	151	200
L (mm)	100	100	120	120	140	160	190	234	270	310
Hole dimension	0,4	0,4	0,4	0,4	0,47	0,47	0,47	0,53	0,53	0,53
Holes x cm ²	262	262	262	262	168	168	168	133	133	133
MESH	45	45	45	45	36	36	36	32	32	32
WEIGHT (Kg)	1,5	1,6	2,2	2,6	3,9	5	7	11	14,2	23

Plug valves



THREADED PLUG VALVES

49

FLANGED PLUG VALVES

51

■ THREADED VALVES can be manufactured according to the following standards:

ANSI - ASME B1.20.1 - NPT
GAS UNI - ISO228
ISO7/1 RC - RP THREADS

■ FLANGED VALVES can be manufactured according to the following standards:

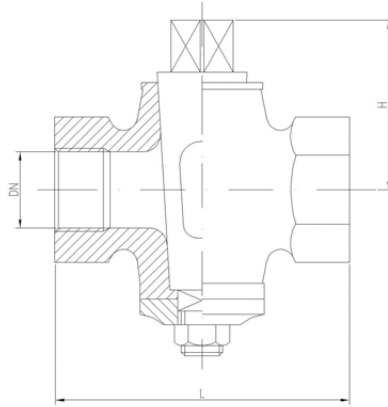
PN16
PN20
B16.24 ASA 150



20002

BRONZE PLUG VALVE 2 WAY PN16 SCREWED ENDS

PN16/B 100WSP 200WOG



STANDARD MATERIALS
Body BRONZE-CC491K UNI EN1982
Plug BRONZE-CC491K UNI EN1982

	1-4"	3-8"	1-2"	3-4"	1"	1"1-4	1"1-2	2"	2"1-2	3"	4"
L (mm)	45	52	58	68	68	82	96	107	150	160	195
H (mm)	35	38	42	50	55	65	70	80	100	110	135
SQUARE on Plug dim.	11	14	14	16	18	23	27	28	32	41	50
WEIGHT (Kg)	0,16	0,25	0,33	0,52	0,7	1,2	1,8	2,4	5	6,7	12,2



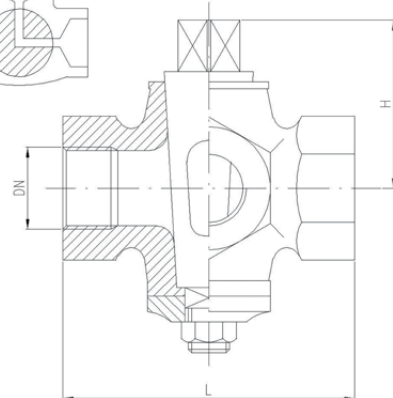
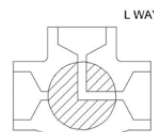
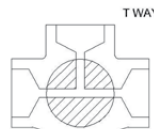
20905

BRONZE PLUG VALVE 3 WAY "TYPE T" PN16 SCREWED ENDS

PN16/B 100WSP 200WOG

20907

PN16/B 100WSP 200WOG
 TIPE L



STANDARD MATERIALS
Body BRONZE-CC491K UNI EN1982
Plug BRONZE-CC491K UNI EN1982

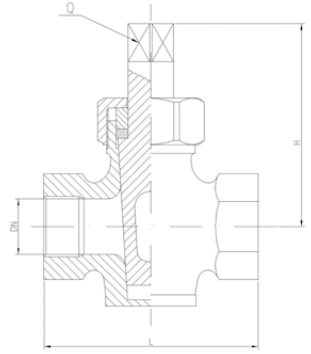
	1-4"	3-8"	1-2"	3-4"	1"	1"1-4	1"1-2	2"	2"1-2	3"	4"
L (mm)	45	48	60	68	73	93	102	118	148	160	180
H (mm)	35	35	38	50	55	65	70	80	100	110	130
SQUARE on Plug dim.	11	12	14	17	18	24	25	27	32	41	50
WEIGHT (Kg)	0,2	0,22	0,32	0,6	0,8	1,45	1,95	3	5,25	6,8	14



RMA24818

BRONZE PLUG VALVE 2 WAY PN16 SCREWED ENDS

PN16/B 100WSP 200WOG



STANDARD MATERIALS	
Body	BRONZE-CC491K UNI EN1982
Plug	BRASS-CW614N UNI EN12164
Gland	BRASS-CW614N UNI EN12164

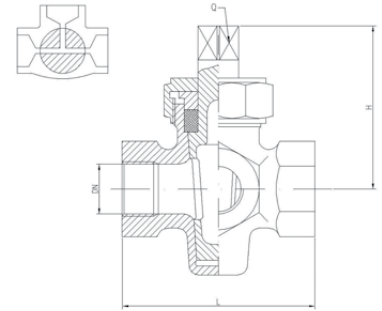
	3-8"	1-2"	3-4"	1"	1"1-4	1"1-2	2"	2"1-2	3"
H (mm)	60	70	72	80	93	116	125	132	138
L (mm)	52	62	74	84	98	110	126	142	156
Q (mm)	10	12	14	16	18	20	24	26	41
WEIGHT (Kg)	0,28	0,42	0,6	0,95	1,3	2	2,8	4,5	6,4



RMA25721

BRONZE PLUG VALVE 3 WAY "TYPE T" PN16 SCREWED ENDS

PN16/B 100WSP 200WOG



STANDARD MATERIALS	
Body	BRONZE-CC491K UNI EN1982
Plug	BRASS-CW614N UNI EN12164
Gland	BRASS-CW614N UNI EN12164

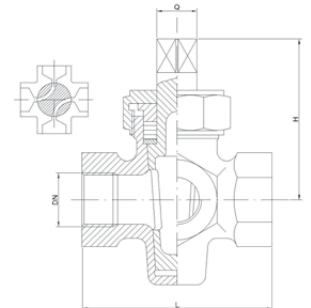
	3-8"	1-2"	3-4"	1"	1"1-4	1"1-2	2"	2"1/2	3"
H (mm)	60	70	72	80	93	116	125	132	138
L (mm)	52	62	74	84	98	110	126	142	156
Q (mm)	10	12	14	16	18	20	24	26	34
WEIGHT (Kg)	0,345	0,5	0,7	1	1,5	2,25	3,25	5	6,8



26323

BRONZE PLUG VALVE 4 WAY PN16 SCREWED ENDS

PN16/B 100WSP 200WOG



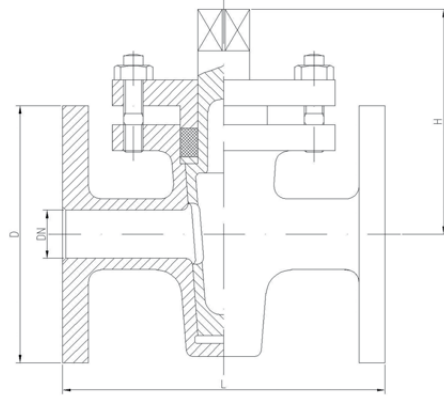
STANDARD MATERIALS	
Body	BRONZE-CC491K UNI EN1982
Plug	BRONZE-CC491K UNI EN1982
Gland	BRONZE-CC491K UNI EN1982

	1-4"	3-8"	1-2"	3-4"	1"	1"1-4	1"1-2	2"
L (mm)	65	70	75	105	115	145	170	180
H (mm)	60	65	70	90	105	115	120	130
Q (mm)	10	12	14	16	18	24	24	27
WEIGHT (Kg)	0,5	0,65	1,1	2,2	2,9	5,4	8,2	11



28101

BRONZE PLUG VALVE 2 WAY PN16 FLANGED ENDS PN16/B 100WSP 200WOG



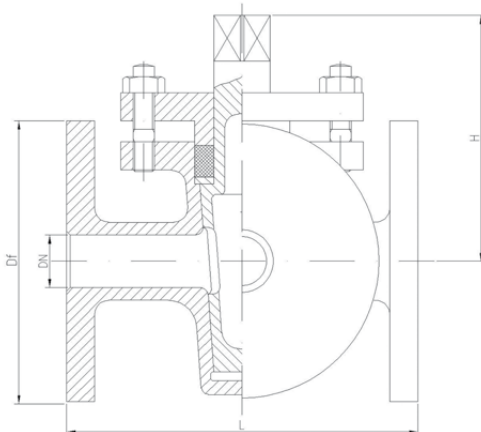
STANDARD MATERIALS	
Body	BRONZE-CC491K UNI EN1982
Plug	BRONZE-CC491K UNI EN1982
Gland	BRONZE-CC491K UNI EN1982

	010	015	020	025	032	040	050	065	080	100
D (mm)	90	95	105	115	140	150	165	185	200	220
L (mm)	65	75	85	100	110	130	150	200	220	270
H (mm)	65	70	80	90	110	130	150	180	200	250
SQUARE on Plug dim.	12	12	16	18	20	24	27	32	32	41
WEIGHT (Kg)	1,3	1,7	2,4	3,1	5,1	7,3	9	17	20	33



28305

BRONZE PLUG VALVE 3 WAY TYPE "L" PN16 FLANGED ENDS PN16/B 100WSP 200WOG



STANDARD MATERIALS	
Body	BRONZE-CC491K UNI EN1982
Plug	BRONZE-CC491K UNI EN1982
Gland	BRONZE-CC491K UNI EN1982

	010	015	020	025	032	040	050	065	080	100
Df (mm) (PN16)	90	95	105	115	140	150	165	185	200	220
L (mm)	110	120	130	140	170	180	200	220	250	270
H (mm)	65	70	80	90	110	130	150	180	200	250
SQUARE on Plug dim.	12	12	16	18	20	24	27	32	32	41
WEIGHT (Kg)	2	2,5	3,7	4,5	8	10	12	18	25	38