

# CETOP5 Pressure Reducing Valves

For "P" Line: **MRP-03-*\**-30**

For "A" Line: **MRA-03-*\**-30**

For "B" Line: **MRB-03-*\**-30**

## Specifications

Model Numbers	Pres. Adj. Range MPa (PSI)	Max. Op Pressure MPa (PSI)	Max. Flow L/min	Weight
MRP-03- <i>*</i> -30	<b>B</b> = 1-7 (145-1020)	25 (3630)	70★	3.8kg
MRA-03- <i>*</i> -30	<b>H</b> = 3.5-24.5 (510-3550)	31.5 (4570)	70★	3.8kg
MRB-03- <i>*</i> -30		31.5 (4570)	70★	3.8kg

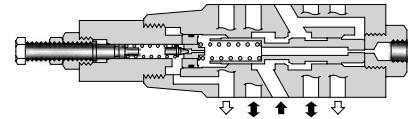
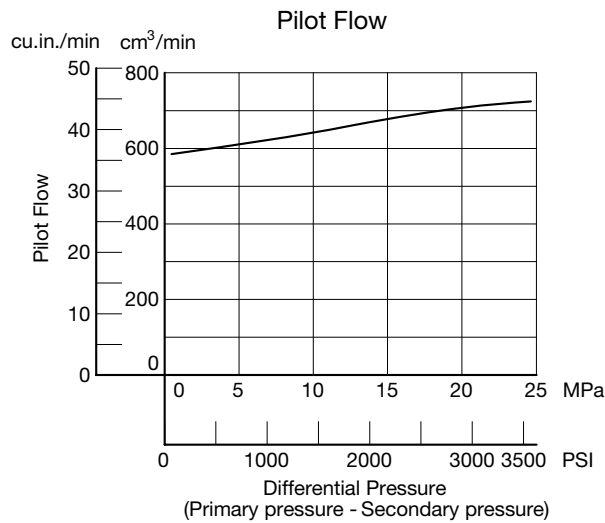
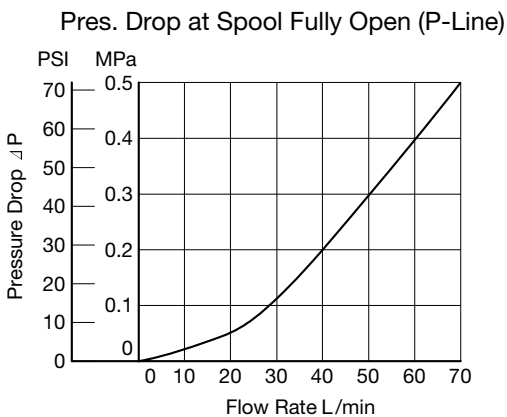
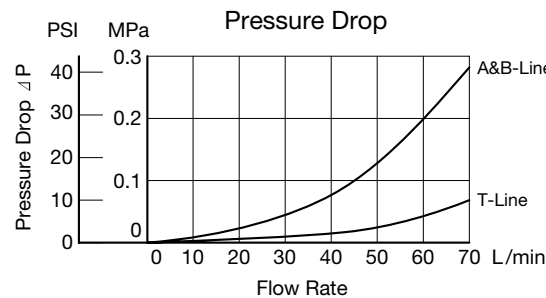
★ In pressure adjustment range "H", if the pressure in the primary side is set above 20 MPa (2900 PSI) and the pressure in the secondary side is set below 10 MPa (1450 PSI), the maximum flow is limited to 50 L/min (13.2 U.S.GPM).

## Instructions

- The minimum adjustment pressure equals the lower limit of either pressure adjustment range (B, H) plus the tank line back pressure of the next page. This back pressure should include the value of the T-line pressure drop characteristics of the valves stacked to the base plate side of the modular valve.
- To make pressure adjustment, loosen the lock nut and turn the pressure adjustment screw clockwise or anticlockwise. For an increase of pressure, turn the screw clockwise. Be sure to re-tighten the lock nut firmly after making adjustment to the pressure.

## Typical Performance Characteristics

Hydraulic Fluid: Viscosity 35 mm<sup>2</sup>/s (164 SSU), Specific Gravity 0.850



Model Numbers	Graphic Symbols	Detailed Graphic Symbols
MRP-03		
MRA-03		
MRB-03		

CETOP MOUNTED VALVES



## Model Number Designation

MRP	-03	-B	-30	*
Series Number	Valve Size	Pres. Adj. Range MPa (PSI)	Design Number	Design Standard
<b>MRP:</b> Pressure Reducing Valve for P-Line	<b>03</b>		<b>30</b>	
<b>MRA:</b> Pressure Reducing Valve for A-Line	<b>03</b>	<b>B:</b> 1-7 (145-1020) <b>H:</b> 3.5-24.5 (510-3550)	<b>30</b>	Refer to ★
<b>MRB:</b> Pressure Reducing Valve for B-Line	<b>03</b>		<b>30</b>	

★ Design Standards: None ... Japanese Standard "JIS" and European Design Standard 90 ... N. American Design Standard

Special seals - On Request