

# CETOP3 Pressure Reducing Valves

For "P" Line: **MRP-01-∗-30**

For "A" Line: **MRA-01-∗-30**

For "B" Line: **MRB-01-∗-30**

## Specifications

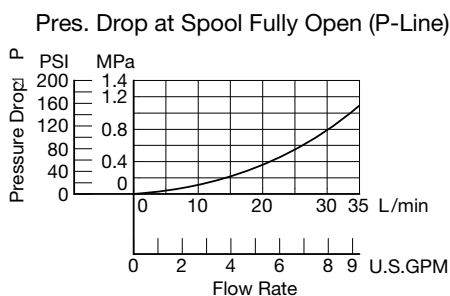
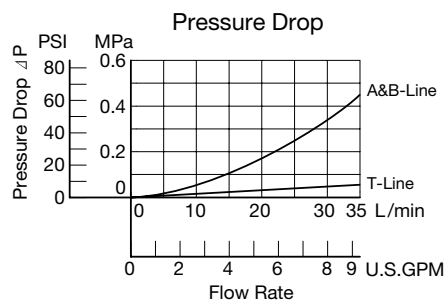
Model Numbers	Pres. Adjustment Range MPa (PSI)	Max. Op Pressure MPa (PSI)	Max. Flow L/min	Weight
MRP-01-∗-30	<b>B</b> = ∗-7 (∗-1020) ★1	31.5 (4570)	35★	1.1kg
MRA-01-∗-30	<b>C</b> = 3.5-14 (510-2030)	31.5 (4570)	35★	1.1kg
MRB-01-∗-30	<b>H</b> = 7-21 (1020-3050)	31.5 (4570)	35★	1.1kg

★If the pressure is set below 1.9 MPa (280 PSI), the maximum flow is limited. See the minimum adjustment pressure vs. maximum flow characteristics and during use, stay within the shaded zone on the graph.

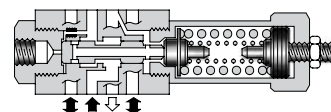
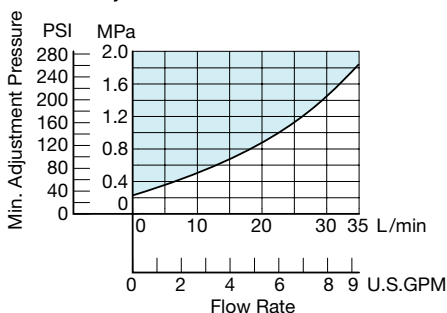
## Instructions

- The minimum adjustment pressure equals the value obtained from the minimum adjustment pressure characteristics plus the tank line back pressure of the next page. This back pressure should include the value of the T-line pressure drop characteristics of the valves stacked to the base plate side of the modular valve.
- To make pressure adjustment, loosen the lock nut and turn the pressure adjustment screw clockwise or anticlockwise. For an increase of pressure, turn the screw clockwise. Be sure to re-tighten the lock nut firmly after making adjustment to the pressure.

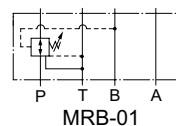
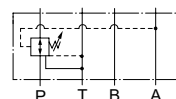
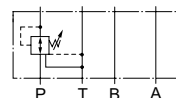
Hydraulic Fluid: Viscosity 35 mm<sup>2</sup>/s (164 SSU), Specific Gravity 0.850



Min. Adjustment Pressure vs. Max. Flow



Graphic Symbols



CETOP MOUNTED VALVES



## Model Number Designation

MRP	-01	-C	-30	*
Series Number	Valve Size	Pres. Adj. Range MPa (PSI)	Design Number	Design Standard
<b>MRP:</b> Pressure Reducing Valve for P-Line	<b>01</b>	<b>B:</b> ∗-7 (∗-1020) ★1	<b>30</b>	
<b>MRA:</b> Pressure Reducing Valve for A-Line	<b>01</b>	<b>C:</b> 3.5-14 (510-2030)	<b>30</b>	Refer to ★2
<b>MRB:</b> Pressure Reducing Valve for B-Line	<b>01</b>	<b>H:</b> 7-21 (1020-3050)	<b>30</b>	

★1. See the "Minimum Adjustment Pressure vs. Maximum Flow" above for the item marked ∗.

★2. Design Standards: None ... Japanese Standard "JIS" and European Design Standard 90 ... N. American Design Standard

Special Seals - On Request