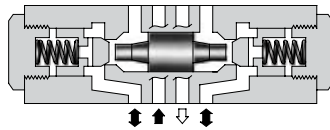


CETOP3 Pilot Operated Check Valves

For "A" Line: MPA-01-**-40

For "B" Line: MPB-01-**-40

For "A&B" Line: MPW-01-**-40

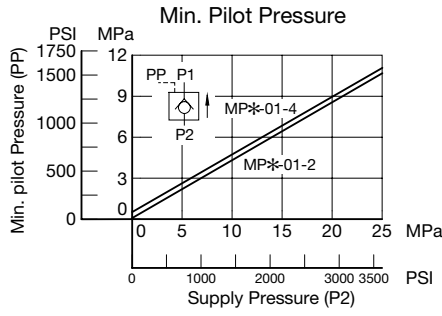
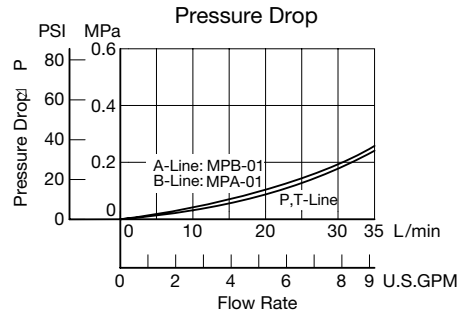
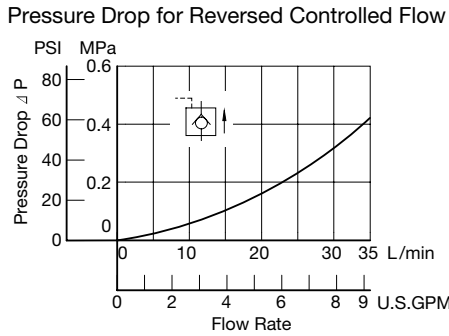
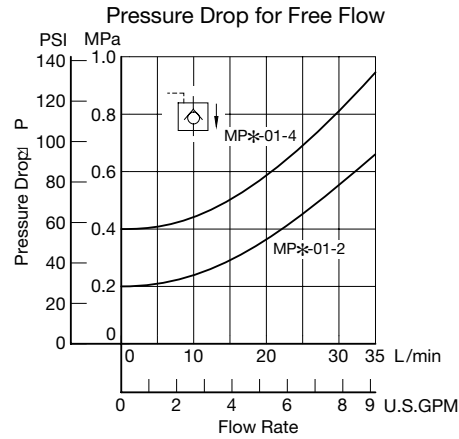


Specifications

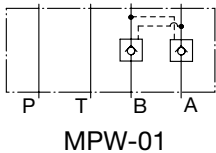
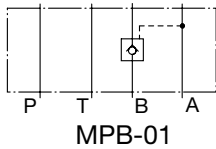
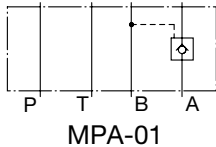
Model Numbers	Cracking Pressure MPa (PSI)	Max. Operating Pressure MPa (PSI)	Max. Flow L/min	Weight
MPA-01-**-40		31.5 (4570)	35	1.2kg
MPB-01-**-40	2 = 0.2 (29) 4 = 0.4 (58)	31.5 (4570)	35	1.2kg
MPW-01-**-40		31.5 (4570)	35	1.2kg

Typical Performance Characteristics

Hydraulic Fluid: Viscosity 35 mm²/s (164 SSU), Specific Gravity 0.850



Graphic Symbols



Model Number Designation

MPA	-01	-2	-40	*
Series Number	Valve Size	Cracking Pressure MPa (PSI)	Design Number	Design Standard
MPA: Pilot Operated Check Valve for A-Line	01		40	
MPB: Pilot Operated Check Valve for B-Line	01	2: 0.2 (29) 4: 0.4 (58)	40	Refer to ★
MPW: Pilot Operated Check Valve for A&B-Line	01		40	

★ Design Standards: None ... Japanese Standard "JIS" and European Design Standard 90 ... N. American Design Standard

Special seals - On Request