

# NICKEL PLATED BRASS MINI BALL VALVES



## SERIES ART 125

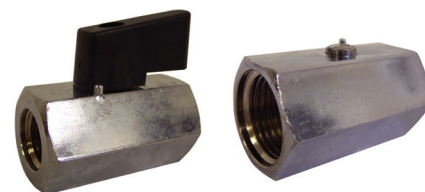
15 BAR Rated - Female x Female connection - ISO 228

Nylon Lever (SUFFIX 'R' FOR RED HANDLE)

Article no.	Size BSP	Max Pressure BAR	Price £	Price €
108030	1/8"	15	£5.80	€6.00
108031	1/4"	15	£5.80	€6.00
108032	3/8"	15	£5.60	€5.80
108033	1/2"	15	£7.00	€7.30
108034	3/4"	15	£10.40	€10.70

Screw Driver Adjustment

Article no.	Price £	Price €
108130	£5.80	€6.00
108131	£5.80	€6.00
108132	£5.60	€5.80
108133	£7.00	€7.30
108134	£10.40	€10.70

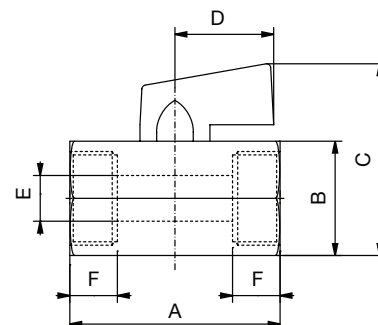


### Materials

Body	Forged Brass - Nickel Plated
Ball	Brass - Chromed
Stem Seal	NITRIL
Ball Seal	PTFE
Temp. Range	0 to +90°C

### Dimensions (mm)

Size	1/8"	1/4"	3/8"	1/2"	3/4"
DN	6	8	10	15	20
A	40	40	40	46	52
B	21	21	21	25	30
C	38	38	38	42	48
D	22	22	22	22	22
E	6	8	8	10	12
F	10	10	10	12	14



## SERIES ART 126

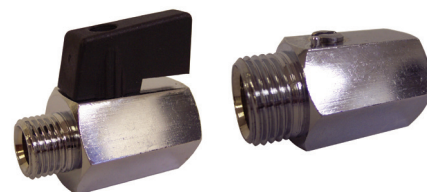
15 BAR Rated - Male x Female connection - ISO 228

Black Nylon Lever

Article no.	Size BSP	Max Pressure BAR	Price £	Price €
108037	1/8"	15	£5.30	€5.50
108038	1/4"	15	£5.20	€5.40
108039	3/8"	15	£5.10	€5.20
108040	1/2"	15	£6.40	€6.60
108041	3/4"	15	£10.70	€11.00

Screw Driver Adjustment

Article no.	Price £	Price €
108137	£5.30	€5.50
108138	£5.20	€5.40
108139	£5.10	€5.20
108140	£6.40	€6.60
108141	£10.70	€11.00



### Materials

Body	Forged Brass - Nickel Plated
Ball	Brass - Chromed
Stem Seal	NITRIL
Ball Seal	PTFE
Temp. Range	0 to +90°C

### Dimensions (mm)

Size	1/8"	1/4"	3/8"	1/2"	3/4"
DN	6	8	10	15	20
A	40	39	40	45	51
B	21	21	21	25	30
C	38	38	38	42	48
D	22	22	22	22	22
E	6	8	8	10	13.5
F	10	10,2	10	16.2	12.2
G	10	9.2	10.2	12.2	14

