

CARBON STEEL WAFER PATTERN BALL VALVE

16 - 40 BAR Rated
Flanged - BS4504 - PN16 / BS4504 - PN40 / ANSI 150 RF
Stainless Steel Ball & Stem

Options available on request

- Firesafe and anti-static
- Cavity filled seats
- Jacketed

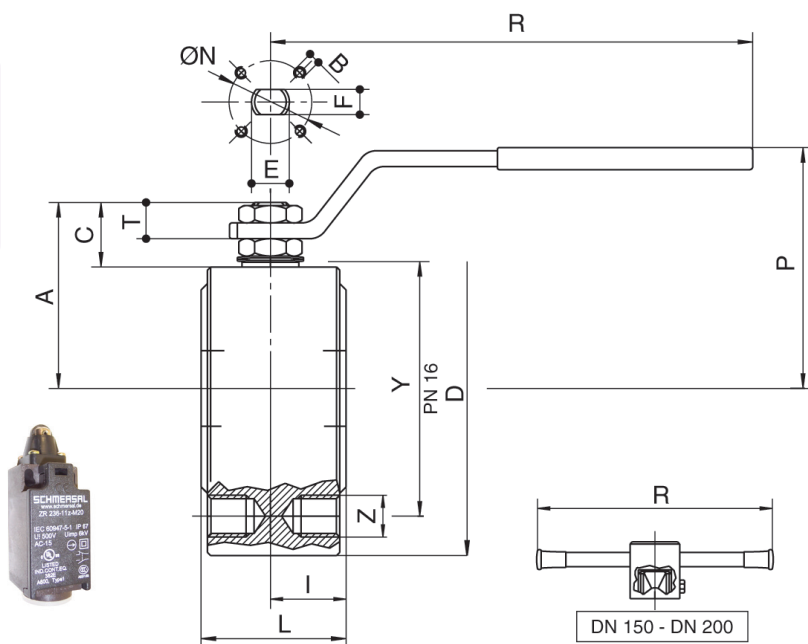
		PN16 / ANSI 150 - 304				FLANGED BS4504 - PN40		
Size	Valve bore	Article no. PN16	Article no. ANSI 150	Price £	Price €	Article no. PN40	Price £	Price €
1/2"	15	72200004	72000904	£176.00	€181.50	72000804	£177.80	€183.40
3/4"	20	72200005	72000905	£179.60	€185.20	72000805	£185.00	€190.80
1"	25	72200006	72000906	£212.00	€218.60	72000806	£216.40	€223.20
1 1/4"	32	72200007	72000907	£249.70	€257.50	72000807	£253.30	€261.20
1 1/2"	40	72200008	72000908	£286.50	€295.50	72000808	£298.20	€307.50
2"	50	72200010	72000910	£335.90	€346.40	72000810	£348.50	€359.40
2 1/2"	65	72200012	72000912	£547.90	€565.00	72000812	£578.40	€596.50
3"	80	72200014	72000914	£665.50	€686.30	72000814	£688.00	€709.50
4"	100	72200018	72000918	£1,005.90	€1,037.30	72000818	£1,339.10	€1,381.00
5"	125	72200019	72000919	£1,659.70	€1,711.60	72000819	£2,374.60	€2,448.90
6"	150	72200020	72000920	£2,465.40	€2,542.40	72000820	£2,773.40	€2,860.10

Materials

- Body Carbon Steel
- Ball 304 Stainless Steel
- Stem Seal Viton
- Ball Seal PTFE
- Temp. Range -20°C to 160°C*
- * For temps above 80°C working pressures are reduced

Limit Switch

Article no.		Price £	Price €
suffix LS	1 switch fitted	£95.60	€114.70
suffix LS2	2 switches fitted	£131.60	€157.90
LS	loose switch	£47.70	€57.20
LSB	BRACKET ONLY	£65.60	€78.70
SWBOX	Limit Switch Enclosed Box	£68.40	€82.10



Dimensions (mm)

size	DN	D	Y	Z	I	L	R	P	A	C	T	E	F	N	B	KV	PN	Kg
1/2"	15	90	65	4xM12	19	35	131.5	64.5	47	15.5	9	10	7	32	4xM5	16.3	16	1.3
3/4"	20	100	75	4xM12	20	40	131.5	69	51.5	15.5	9	10	7	32	4xM5	29.5	16	1.9
1"	25	110	85	4xM12	24	46	174.5	80	60	19.5	12	12	8	42 F04	4xM5	43	16	2.7
1 1/4"	32	130	100	4xM16	28	54	174.5	84	64.5	16.5	12	12	8	42 F04	4xM5	89	16	4.2
1 1/2"	40	140	110	4xM16	31.75	63.5	250.5	100	76.5	23.5	14	16	10	50 F05	4xM6	230	16	5.7
2"	50	150	125	4xM16	41	82	250.5	108.5	86	24	15	16	10	50 F05	4xM6	265	16	7.5
2 1/2"	65	175	145	4xM16	51.5	103	321.5	128	104.5	28	18	20	14	70 F07	4xM8	540	16	13.2
3"	80	190	160	8xM16	61	122	321.5	137.5	114	28	18	20	14	70 F07	4xM8	873	16	18.2
4"	100	220	180	8xM16	76	152	381.5	156.5	137	34.5	22	24	18	102 F10	4xM10	1390	16	29.5
5"	125	250	210	8xM16	98	196	381.5	178.5	159	34	22	24	18	102 F10	4xM10	1707	16	40
6"	150	300	240	8xM20	116	232	700	237	201.5	51.5	30	42	30	125 F12	4xM12	2024	16	73